



2024

NEW SF531 UNISEX SUSTAINABLE FASHION HOODY (PG.5)

SF432 UNISEX SUSTAINABLE FASHION SWEAT SHORTS (PG.7)

SK230 WOMEN'S SUSTAINABLE FASHION CROPPED CAMI TOP (PG.7)

SK431 WOMEN'S SUSTAINABLE FASHION WIDE LEG JOGGERS (PG.7)



SUSTAINABLE FASHION PAGE 4

FEEL GOOD STRETCH PAGE 8

FASHION COLLARS PAGE 10

FASHION TOPS PAGE 11

FASHION SHORTS + LEGGINGS PAGE 17

FASHION SWEATS + FLEECE PAGE 19

FASHION LOUNGEWEAR PAGE 23

BACK OF THE BOOK PAGE 26



THE FULL SF RANGE IS  
Peta-Approved Vegan

# SUSTAINABLE.

LESS WATER. LESS ENERGY. LESS CHEMICALS.

60% REGENERATED COTTON, 40% RECYCLED POLYESTER,  
BRUSHED BACK FLEECE



NEW SM531 + SM430



NEW SF531



LARKWOOD: LW800

S F X LARKWOOD



SM530



SF530 + SF430



LARKWOOD: LW802 + LW850

S F X LARKWOOD



**SF430/SM430/LW850** UNISEX/KIDS'/BABIES' SUSTAINABLE FASHION CUFFED JOGGERS  
**SF530/SM530/LW800** UNISEX/KIDS'/BABIES' SUSTAINABLE FASHION SWEATS  
**NEW SF531/SM531/LW802** UNISEX/KIDS'/BABIES' SUSTAINABLE FASHION HOODIES

ADULTS' SF430, SF530 + SF531 SIZES: 2XS-3XL  
 KIDS' SM430, SM530 + SM531 SIZES (YEARS): 7-8, 9-10, 11-12  
 LARKWOOD BABIES' LW850, LW800 + LW802 SIZES: 0/6MTHS - 5/6YRS

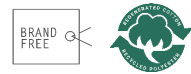
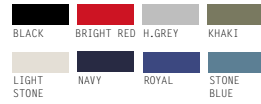


CREATED WITH REGENERATED COTTON. SPUN FROM FACTORY OFFCUTS, AND BLENDED WITH RECYCLED POLYESTER MADE FROM POST-CONSUMER PLASTIC BOTTLES. ALL REJECTS ARE HAND SIFTED AND REMOVED BEFORE SPINNING INTO YARN BUT SOME MINOR SLUBS MAY STILL BE PRESENT IN THE FINISHED PRODUCT. FASHION COLOURS HAVE BEEN OVERDYED TO ACHIEVE THE SHADE WHICH MAY VARY FROM GARMENT TO GARMENT.



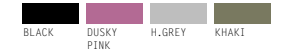
**SF130**  
UNISEX SUSTAINABLE  
GENERATION T

60% REGENERATED COTTON,  
40% RECYCLED POLYESTER  
180GSM SINGLE JERSEY  
SIZES: 2XS-4XL



**SK230**  
WOMEN'S SUSTAINABLE  
FASHION CROPPED  
CAMI TOP

48% REGENERATED COTTON,  
47% RECYCLED POLYESTER,  
5% ELASTANE  
200GSM SINGLE JERSEY  
SIZES: XS-2XL



**SF140**  
UNISEX ORGANIC T

100% ORGANIC COTTON  
150GSM SINGLE JERSEY  
SIZES: 2XS-4XL



**SK431**  
WOMEN'S SUSTAINABLE  
FASHION WIDE LEG  
JOGGERS

60% REGENERATED COTTON,  
40% RECYCLED POLYESTER  
260GSM BRUSHED BACK FLEECE  
SIZES: XS-2XL



**SF432**  
UNISEX SUSTAINABLE  
FASHION SWEAT  
SHORTS

60% REGENERATED COTTON,  
40% RECYCLED POLYESTER  
260GSM BRUSHED BACK FLEECE  
SIZES: 2XS-3XL

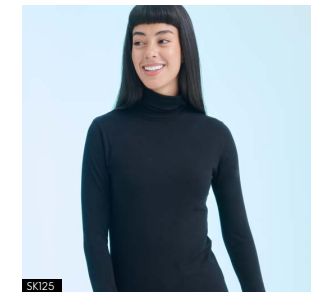
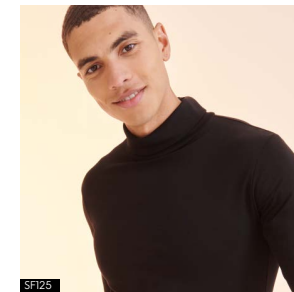
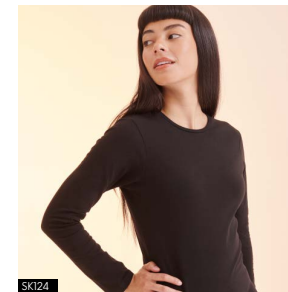
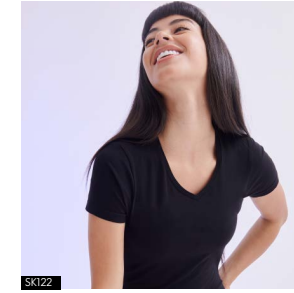


\*DECORATED FOR DISPLAY PURPOSES ONLY, GARMENTS ARE SUPPLIED BLANK

# FEEL GOOD STRETCH

13 STYLES, 19 COLOURS

SOFT STRETCH FABRIC. SUPREME FINISH. FEELS GOOD.



## SF121/SK121/SM121 MEN'S/WOMEN'S/KIDS' FEEL GOOD STRETCH TEES

MEN'S SF121 SIZES: \*XS-2XL  
WOMEN'S SK121 SIZES: XS-2XL  
KIDS' SM121 SIZES (YEARS): 3-4, 5-6, 7-8, 9-10, 11-12

\*XS ONLY AVAILABLE IN COLOURS BLACK AND WHITE

96% COTTON, 4% ELASTANE  
165GSM SINGLE JERSEY. ENZYME FINISH

(H.PINK + H.RED: 90% COTTON, 6% VISCOSE, 4% ELASTANE.  
H.CHARCOAL: 60% COTTON, 36% POLYESTER, 4% ELASTANE.  
H.BLUE + H.NAVY: 65% POLYESTER, 30% COTTON, 5% ELASTANE.  
H.GREY: 81% COTTON, 15% VISCOSE, 4% ELASTANE)

SF121 SK121 SM121 BLACK	SF121 SK121 SM121 WHITE	SF121 SK121 SM121 BRIGHT RED	SF121 SK121 SM121 CORAL	SF121 SK121 SM121 DUSKY PINK
SF121 SK121 GREEN	SF121 SK121 H.BLUE	SF121 SK121 H.GREY	SF121 SK121 H.NAVY	SF121 SK121 KHAKI
SF121 SK121 NAVY	SF121 SK121 ROYAL	SF121 SK121 SURF BLUE	SK121 BABY PINK	SK121 BURGUNDY
SK121 LIGHT STONE	SK121 H.PINK	SK121 H.RED	SF121 H.CHARCOAL	



**SF122** MEN'S FEEL GOOD STRETCH V SIZES: S-2XL  
**SK122** WOMEN'S FEEL GOOD STRETCH V SIZES: XS-2XL  
**SF123** MEN'S FEEL GOOD STRETCH VEST SIZES: S-2XL  
**SK123** WOMEN'S FEEL GOOD STRETCH VEST SIZES: XS-2XL  
**SM123** KIDS' FEEL GOOD STRETCH VEST SIZES (YEARS): 5-6, 7-8, 9-10, 11-12  
**SF124** MEN'S FEEL GOOD STRETCH LONG SLEEVED T SIZES: S-2XL  
**SK124** WOMEN'S FEEL GOOD STRETCH LONG SLEEVED T SIZES: XS-2XL  
**SF125** MEN'S FEEL GOOD STRETCH ROLL NECK SIZES: S-2XL  
**SK125** WOMEN'S FEEL GOOD STRETCH ROLL NECK SIZES: XS-2XL  
**SK126** WOMEN'S FEEL GOOD STRETCH SPAGHETTI VEST SIZES: XS-XL

BLACK	SF122, SK122, SF123, SK123, SM123, SF124, SK124, SF125, SK125, SK126
WHITE	SF122, SK122, SF123, SK123, SM123, SF124, SK124
H.GREY	SF124
H.BLUE	SK124



# FASHION COLLARS



**SF560**  
MEN'S BRUSHED  
CHECK CASUAL SHIRT  
WITH BUTTON DOWN COLLAR

65% POLYESTER, 35% VISCOSE  
120GSM TWILL, BRUSHED  
SIZES: S-2XL



BURGUNDY CHECK NAVY CHECK



**SF042/SK042**  
MEN'S/WOMEN'S SHORT  
SLEEVED STRETCH POLOS

96% COTTON, 4% ELASTANE  
200GSM MICRO PIQUE  
MEN'S SIZES: S-2XL  
WOMEN'S SIZES: S-XL



BLACK



STRETCH

# FASHION TOPS



**SF271/SK271/SM271**  
MEN'S/WOMEN'S/KIDS'  
LONG SLEEVED  
BASEBALL TEES

100% COTTON  
(H.GREY: 85% COTTON, 15% VISCOSE)  
140GSM SINGLE JERSEY  
MEN'S SIZES: XS-2XL  
WOMEN'S SIZES: XS-XL  
KIDS' SIZES (YEARS): 5-6, 7-8, 9-10, 11-12



H.GREY/  
BLACK  
\*SF271 +  
SK271 ONLY



WHITE/  
HOT PINK  
\*SK271  
ONLY

H.GREY/  
ROYAL  
\*SK271  
ONLY



TEAR-OUT  
LABEL



**SF202/SM202**  
UNISEX/KIDS'  
STRIPED TEES

**SF204**  
UNISEX L/S  
STRIPED T

100% COTTON  
160GSM SINGLE JERSEY  
ADULTS' SIZES: 2XS-2XL  
KIDS' SIZES (YEARS): 5-6, 7-8, 9-10, 11-12



WHITE/  
OX.NAVY

H.GREY/  
WHITE\*  
\*SF202 ONLY



TEAR-OUT  
LABEL

SF X LARKWOOD LW027



**SF232/SK232**  
MEN'S/WOMEN'S HIGH NECK  
SLASH ARMHOLE VESTS

60% COTTON, 40% POLYESTER  
(H.GREY: 85% COTTON, 15% VISCOSE)  
140GSM SINGLE JERSEY  
MEN'S SIZES: XS-2XL  
WOMEN'S SIZES: XS-2XL



**SF203**  
UNISEX WASHED BAND T

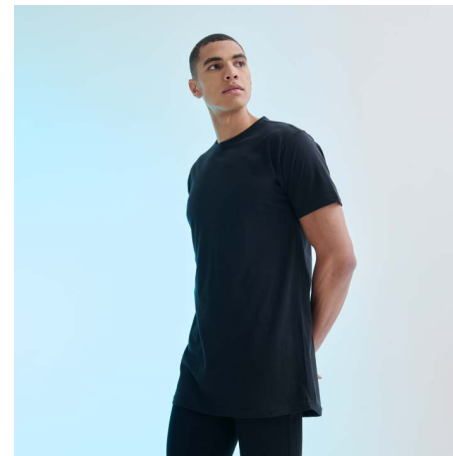
100% COTTON  
160GSM SINGLE JERSEY  
PIGMENT DYED, ACID WASHED +  
HEAVY ENZYME WASHED.  
SIZES: 2XS-2XL



WASHED  
BLACK

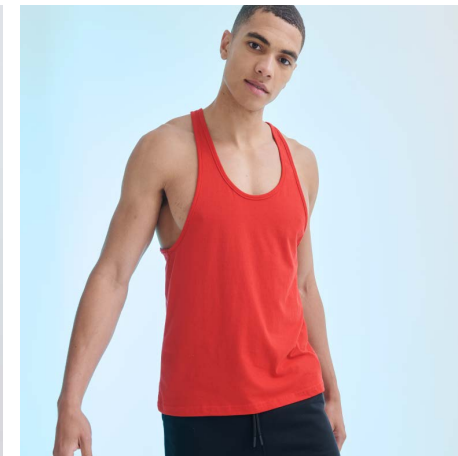


EACH GARMENT HAS BEEN INDIVIDUALLY DYED,  
GIVING IT A UNIQUE FINISH. THE EFFECT MAY  
VARY FROM GARMENT TO GARMENT AND WILL  
VARY FURTHER AFTER WASHING. ADDING TO THE  
CHARACTER OF THIS STYE. FIRST WASH  
SEPARATELY, THEN ALWAYS WASH WITH LIKE  
COLOURS. COLOUR MAY TRANSFER ON TO LIGHT  
COLOURS.



**SF258**  
MEN'S LONGLINE T  
WITH DIPPED HEM

100% COTTON  
140GSM SINGLE JERSEY  
SIZES: S-2XL



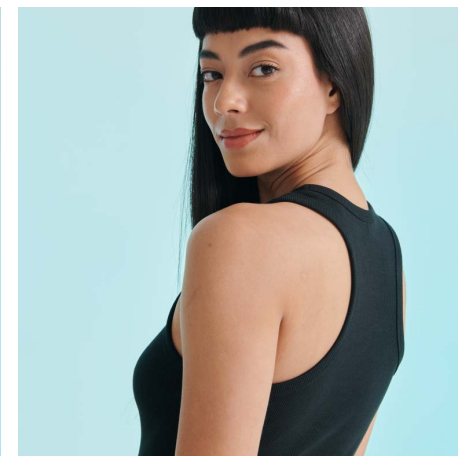
**SF236**  
MEN'S MUSCLE VEST

60% COTTON, 40% POLYESTER  
(H.GREY: 85% COTTON,  
15% VISCOSE)  
140GSM SINGLE JERSEY  
SIZES: S-2XL



**SK237**  
WOMEN'S CROPPED BOXY T

60% COTTON, 40% POLYESTER  
140GSM SINGLE JERSEY  
SIZES: 2XS-XL



**SK150**  
WOMEN'S STRETCH RACER-BACK TANK

96% COTTON, 4% ELASTANE  
240GSM 2X1 STRETCH RIB  
SIZES: S-L





SK104/SK257

**SK104**  
WOMEN'S  
STRETCH VEST DRESS

96% COTTON, 4% ELASTANE  
190GSM SINGLE JERSEY  
SIZES: S-XL



**SK257**  
WOMEN'S  
T-SHIRT DRESS

100% COTTON  
180GSM SINGLE JERSEY  
SIZES: S-XL



SK233/SK234

**SK233**  
WOMEN'S  
DROP TAIL T

60% COTTON, 40% POLYESTER  
(H.GREY: 85% COTTON, 15%  
VISCOSE)  
140GSM SINGLE JERSEY  
SIZES: XS-2XL



**SK234**  
WOMEN'S  
SLOUNGE VEST

60% COTTON, 40% POLYESTER  
140GSM SINGLE JERSEY  
SIZES: XS-2XL



SK241

**SK241**  
WOMEN'S FASHION WORKOUT VEST

90% POLYESTER, 10% ELASTANE  
150GSM SINGLE JERSEY  
SIZES: XS-2XL



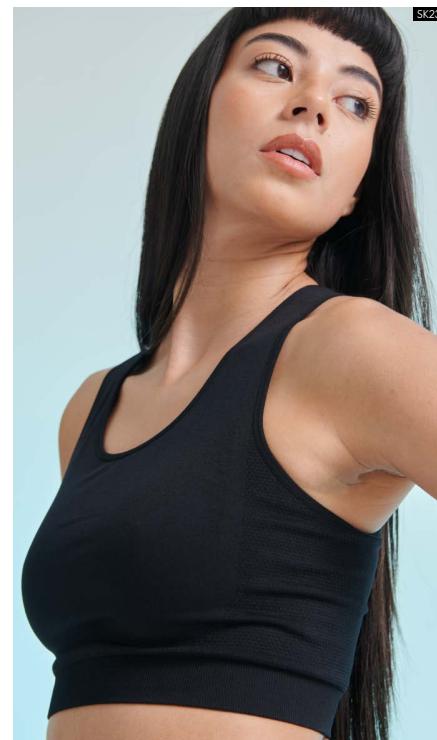
**SK170**  
WOMEN'S HIGH NECK CROP VEST

96% COTTON, 4% ELASTANE  
220GSM SINGLE JERSEY  
SIZES: XS-L



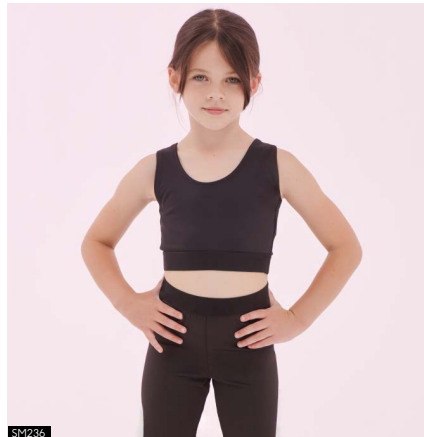
**SK235**  
WOMEN'S WORKOUT CROPPED TOP

BLACK: 65 NYLON, 31% POLYESTER 4% ELASTANE  
NEON PINK: 92% NYLON, 8% ELASTANE  
280GSM DOUBLE LAYER INTERLOCK  
SIZES: S-L



SK235





**SK106/SM106**  
WOMEN'S/KIDS' CROPPED TOPS

93% COTTON, 7% ELASTANE  
190GSM SINGLE JERSEY  
WOMEN'S SIZES: XS-XL  
KIDS' SIZES (YEARS): 5-6, 7-8, 9-10, 11-12



**SK236/SM236**  
WOMEN'S/ KIDS' FASHION CROP TOPS

88% POLYESTER, 12% ELASTANE  
300GSM SINGLE JERSEY (+ JACQUARD BAND)  
WHITE SUITABLE FOR SUBLIMATION PRINTING  
WOMEN'S SIZES: XS-L  
KIDS' SIZES (YEARS): 5-6, 7-8, 9-10, 11-12



**SHORTS + LEGGINGS**



\*DECORATED FOR DISPLAY PURPOSES ONLY, GARMENTS ARE SUPPLIED BLANK



**SK427/SM427**  
WOMEN'S/KIDS' FASHION CYCLING SHORTS

**SK426/SM426**  
WOMEN'S/ KIDS' FASHION LEGGINGS

88% POLYESTER, 12% ELASTANE  
300GSM SINGLE JERSEY (+ JACQUARD BAND)  
WHITE SUITABLE FOR SUBLIMATION PRINTING

WOMEN'S SIZES: XS-XL  
KIDS' SIZES (YEARS): 5-6, 7-8, 9-10, 11-12



**SK064/SM064**

WOMEN'S/KIDS' LEGGINGS

**SK068**

WOMEN'S 3/4 LENGTH LEGGINGS

96% COTTON, 4% ELASTANE  
190GSM SINGLE JERSEY  
WOMEN'S SK064 SIZES: XS-XL  
KIDS' SM064 SIZES (YEARS) : 3-4, 5-6, 7-8, 9-10, 11-12  
WOMEN'S SK068 SIZES: XS-2XL



SM064



SK068/SK064

**SK069/SM069**

WOMEN'S/KIDS' RETRO SHORTS

100% COTTON  
220GSM SINGLE JERSEY  
(H.GREY: 85% COTTON, 15% VISCOSE)  
WOMEN'S SIZES: XS-2XL  
KIDS' SIZES (YEARS): 5-6, 7-8, 9-10, 11-12



SK069



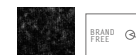
SM069

**FASHION SWEATS + FLEECE**



**SF520**  
UNISEX WASHED TOUR SWEAT

100% COTTON  
250GSM FRENCH TERRY  
PIGMENT DYED, ACID WASHED  
+ HEAVY ENZYME WASHED  
SIZES: 2XS-2XL



WASHED BLACK  
EACH GARMENT HAS BEEN INDIVIDUALLY DYED, GIVING IT A UNIQUE FINISH. THE EFFECT MAY VARY FROM GARMENT TO GARMENT AND WILL VARY FURTHER AFTER WASHING, ADDING TO THE CHARACTER OF THIS STYE. FIRST WASH SEPARATELY. THEN ALWAYS WASH WITH LIKE COLOURS. COLOUR MAY TRANSFER ON TO LIGHT COLOURS.



**SF525**  
UNISEX SLIM FIT SWEAT

60% COTTON, 40% POLYESTER  
250GSM BRUSHED BACK FLEECE  
SIZES: 2XS-2XL





**SF425/SK425/SM425**  
MEN'S/WOMEN'S/KIDS'  
SLIM FIT CUFFED JOGGERS

60% COTTON, 40% POLYESTER  
(H.GREY: 75% COTTON, 20% POLYESTER, 5% VISCOSE)  
250GSM BRUSHED BACK FLEECE  
MEN'S SIZES: S-2XL  
WOMEN'S SIZES: XS-XL  
KIDS' SIZES (YEARS): 5-6, 7-8, 9-10, 11-12



**SF470/SM470**  
UNISEX/KIDS' ALL-IN-ONE

80% COTTON, 20% POLYESTER  
(H.GREY: 71% COTTON, 23% POLYESTER, 6% VISCOSE)  
280GSM BRUSHED BACK FLEECE  
ADULTS' SIZES: 2XS/XS, S/M, L/XL  
KIDS' SIZES (YEARS): 3-4, 5-6, 7-8, 9-10, 11-12, 13



SF X LARKWOOD LW070



SK513

SK028

**SK513**  
WOMEN'S SLOUNGE  
SWEAT

100% COTTON  
(H.GREY: 85% COTTON, 15% VISCOSE)  
250GSM FRENCH TERRY  
SIZES: S-XL



SF514

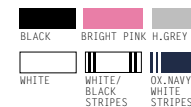
**SK028**  
WOMEN'S  
MICROFLEECE JACKET

100% POLYESTER  
200GSM MICROFLEECE  
SIZES: XS-2XL



**SF514**  
UNISEX DROP SHOULDER  
SLOGAN TOP

100% COTTON  
(H.GREY: 85% COTTON, 15% VISCOSE)  
220GSM SINGLE JERSEY  
GARMENT WASHED  
SIZES: 2XS-2XL



\*DECORATED FOR DISPLAY PURPOSES ONLY, GARMENTS ARE SUPPLIED BLANK



SK515/SK516

**SK515/SM515**  
WOMEN'S/KIDS' CROPPED  
SLOUNGE SWEAT

**SK516**  
WOMEN'S CROPPED  
SLOUNGE HOODY

80% COTTON, 20% POLYESTER  
280GSM BRUSHED BACK FLEECE  
(H.GREY: 70% COTTON, 30% POLYESTER)  
WOMEN'S SK515 SIZES: S-XL  
WOMEN'S SK516 SIZES: XS-XL  
KIDS' SM515 SIZES (YEARS): 5-6, 7-8, 9-10, 11-12, 13



SM515

**LOUNGEWEAR**



**SF086/SK085/SM085/LW085**  
UNISEX/WOMEN'S/KIDS'/BABIES'  
CUFFED LOUNGE PANTS

96% COTTON, 4% ELASTANE  
180GSM SINGLE JERSEY  
UNISEX SIZES: XS-3XL  
WOMEN'S SIZES: XS-2XL  
KIDS' SIZES (YEARS): 5-6, 7-8, 9-10, 11-12, 13  
LARKWOOD BABIES' SIZES: 0/6MTHS - 3/4YRS



LW085

S F X LARKWOOD



SF X LARKWOOD



LW083

**SF083/SK083/SM083/LW083**  
MEN'S/WOMEN'S/KIDS'/BABIES'  
TARTAN LOUNGE PANTS

100% COTTON  
115GSM FLANNEL (TWILL WEAVE)  
MEN'S SIZES: XS-2XL  
(SF083 RED/NAVY CHECK SIZES XS-3XL)  
WOMEN'S SIZES: 2XS-XL  
(SK083 RED/NAVY CHECK SIZES 2XS-3XL)  
KIDS' SIZES (YEARS): 5-6, 7-8, 9-10, 11-12, 13  
LARKWOOD BABIES SIZES: 0/6MTHS - 3/4YRS



SF X LARKWOOD



**SF074/SK074/SM074/LW074**  
MEN'S/WOMEN'S/KIDS'/BABIES'  
TARTAN LOUNGE SET

100% COTTON  
115GSM FLANNEL (TWILL WEAVE)  
MEN'S SIZES: XS-2XL  
WOMEN'S SIZES: XS-2XL  
KIDS' SIZES (YEARS): 3-4, 5-6, 7-8, 9-10, 11-12, 13  
LARKWOOD BABIES SIZES: 0/6MTHS - 24/36MTHS



**SF082**  
MEN'S TARTAN  
LOUNGE SHORTS

**SK082**  
WOMEN'S TARTAN FRILL  
LOUNGE SHORTS

100% COTTON  
115GSM FLANNEL (TWILL WEAVE)  
MEN'S SIZES: XS-2XL  
WOMEN'S SIZES: 2XS-XL



# COLOUR GUIDE



## STAY CONNECTED

For any questions about SF, contact us at: [enquiries@sf-clothing.com](mailto:enquiries@sf-clothing.com) or visit [sf-clothing.com](http://sf-clothing.com)

For more great quality and style, check out the full range of brands at [henburybrands.com](http://henburybrands.com)

**HENBURY BRANDS**

If you'd like to arrange a virtual meeting or a visit with our brand rep, please contact [enquiries@sf-clothing.com](mailto:enquiries@sf-clothing.com)

## SOCIAL

Keep in the loop with where we're going and the new trends we love!

[SFSKINFITCLOTHING](https://www.instagram.com/sfkinfitclothing)

[SF.PROMO.CLOTHING](https://www.facebook.com/sf.promo.clothing)

[HENBURY BRANDS](https://www.linkedin.com/company/henbury-brands)

## RESOURCES

Get access to our logos, torso shots, and lifestyle photography: [cloud.henbury.com](http://cloud.henbury.com)

# TO FIT GUIDE

THE FIT OF A GARMENT MAY VARY DEPENDING ON THE CUT, STYLE AND FABRIC. IT IS ADVISABLE TO USE ACTUAL BODY MEASUREMENTS RATHER THAN MEASURING OVER CLOTHES.

## UNISEX

UNISEX- TOPS	2XS	XS	S	M	L	XL	2XL	3XL	4XL
UK MEN'S SIZE	2XS	XS	S	M	L	XL	2XL	3XL	4XL
EUR MEN'S - CHEST	42-44	44-46	46-48	48-50	52	54-56	58	60-62	64
UK WOMEN'S	10	12	14	16	18	20	22	24	26
EUR WOMEN'S	38	40	42	44	46	48	50	52	54
CHEST - INCHES	32-34"	34-36"	36-38"	38-40"	42"	44-46"	48"	50-52"	54"
CHEST - CMS	81-86cm	86-91cm	91-96cm	96-101cm	107cm	112-117cm	122cm	127-132cm	137cm
UNISEX - BOTTOMS	2XS	XS	S	M	L	XL	2XL	3XL	
UK MEN'S SIZE	2XS	XS	S	M	L	XL	2XL	3XL	
EUR MEN'S - WAIST	38	40	42	44	46	48	50	52	
UK WOMEN'S	10	12	14	16	18	20	22	24	
EUR WOMEN'S	38	40	42	44	46	48	50	52	
WAIST - INCHES	28"	30"	32"	34"	36"	38"	40"	42"	
WAIST - CMS	71cm	76cm	81cm	86cm	91cm	96cm	101cm	106cm	
INSIDE LEG - REG - IN	32"	32"	32"	32"	32"	32"	32"	32"	
INSIDE LEG - REG - CM	81cm	81cm	81cm	81cm	81cm	81cm	81cm	81cm	

## MEN

MEN'S SIZES	XS	S	M	L	XL	2XL
EUR - CHEST	44-46	46-48	48-50	52	54-56	58
EUR - WAIST	40	42	44	46	48	50
CHEST - INCHES	34-36"	36-38"	38-40"	42"	44-46"	48"
CHEST - CMS	86-91cm	91-96cm	96-101cm	102"	112-117cm	122cm
WAIST - INCHES	30"	32"	34"	36"	38"	40"
WAIST - CMS	76cm	81cm	86cm	91cm	96cm	101cm
INSIDE LEG - REG - IN	32"	32"	32"	32"	32"	32"
INSIDE LEG - REG - CMS	81cm	81cm	81cm	81cm	81cm	81cm

## WOMEN

WOMEN'S SIZES	2XS	XS	S	M	L	XL	2XL	3XL
UK	6	8	10	12	14	16	18	20
EUR	34	36	38	40	42	44	46	48
CHEST - INCHES	28-30"	30-32"	32-34"	34-36"	36-38"	38-40"	40-42"	42-44"
CHEST - CMS	71-76cm	76-81cm	81-86cm	86-91cm	91-96cm	96-101cm	101-107cm	107cm-111cm
WAIST - INCHES	24"	26"	28"	30"	32"	34"	36"	38"
WAIST - CM	61cm	66cm	71cm	76cm	81cm	86cm	91cm	96cm
INSIDE LEG - REG - IN	32"	32"	32"	32"	32"	32"	32"	32"
INSIDE LEG - REG - CM	81cm	81cm	81cm	81cm	81cm	81cm	81cm	81cm

## KIDS - PLEASE NOTE THAT HEIGHT IS A BETTER INDICATION OF FIT THAN AGE.

KIDS' AGES	3/4	4/6	5/6	7/8	7/9	9/10	10/12	11/12	13
HEIGHT - CMS	104cm	104-116cm	116cm	128cm	122-134cm	140cm	140-152cm	152cm	164cm
CHEST - INCHES	22"	22-24"	24"	26"	25-27"	28"	28.75-30.75"	30.5"	33"
CHEST - CMS	56cm	56-61cm	61cm	66cm	63-69cm	71cm	73-78cm	78cm	84cm
WAIST - INCHES	21"	21.25-22.5"	22"	23"	23-24.5"	24.5"	25.25-26.75"	26"	27.5"
WAIST - CMS	54cm	54-57cm	56cm	58cm	58-62cm	62cm	64-68cm	66cm	70cm

Need actual measurements instead? A summary of our garment size specs can be found on our website: [www.sf-clothing.com](http://www.sf-clothing.com)

# PRODUCT GUIDE

## SF WOMEN



**SK028** Women's Microfleece Jacket P.21



**SK042** Women's Stretch Polo P.10



**SK064** Women's Leggings P.18



**SK068** Women's 3/4 Length Leggings P.18



**SK069** Women's Retro Shorts P.18



**SK074** Women's Tartan Lounge Set P.25



**SK426** Women's Fashion Leggings P.17



**SK427** Women's Fashion Cycling Shorts P.17



**SK431** Women's Sustainable Fashion Wide Leg Joggers | P. 7



**SK513** Women's Slounge Sweat P.21



**SK515** Women's Cropped Slounge Sweat | P.22



**SK516** Women's Cropped Slounge Hoody | P.22



**SK082** Women's Tartan Frill Lounge Shorts | P.25



**SK083** Women's Tartan Lounge Pants P.24



**SK085** Women's Cuffed Lounge Pants P.23



**SK104** Women's Stretch Vest Dress P.14



**SK106** Women's Cropped Top P.16



**SK121** Women's Feel Good Stretch T P.8

## SF MINNI



**SM064** Kids' Leggings P.18



**SM069** Kids' Retro Shorts P.18



**SM074** Kids' Tartan Lounge Set P.25



**SM083** Kids' Tartan Lounge Pants P.24



**SM085** Kids' Cuffed Lounge Pants P.23



**SM106** Kids' Cropped Top P.16



**SK122** Women's Feel Good Stretch V P.9



**SK123** Women's Feel Good Stretch Vest | P.9



**SK124** Women's Feel Good Stretch Long/Slv T | P.9



**SK125** Women's Feel Good Stretch Roll Neck | P.9



**SK126** Women's Feel Good Stretch Spaghetti Vest | P.9



**SK150** Women's Stretch Racer-Back Tank | P.13



**SM121** Kids' Feel Good Stretch T P.8



**SM123** Kids' Feel Good Stretch Vest | P.9



**SM202** Kids' Striped T P.11



**SM236** Kids' Fashion Cropped Top | P.16



**SM271** Kids' Long/Slv Baseball T P.11



**SM425** Kids' Slim Fit Cuffed Joggers P.20



**SK170** Women's High Neck Crop Vest P.15



**SK230** Women's Sustainable Fashion Cropped Cami Top | P.7



**SK232** Women's High Neck Slash Armhole Vest | P.12



**SK233** Women's Drop Tail T P.14



**SK234** Women's Slounge Vest P.14



**SK235** Women's Workout Cropped Top P.15



**SM426** Kids' Fashion Leggings P.17



**SM427** Kids' Fashion Cycling Shorts P.17



**SM430** Kids' Sustainable Fashion Cuffed Joggers | P.4/5



**SM470** Kids' All-In-One P.20



**SM515** Kids' Cropped Slounge Sweat | P.22



**SM530** Kids' Sustainable Fashion Sweat | P.4



**SK236** Women's Fashion Cropped Top | P.16



**SK237** Women's Cropped Boxy T P.13



**SK241** Women's Fashion Workout Vest P.15



**SK257** Women's T-shirt Dress P.14



**SK271** Women's Long/Slv Baseball T P.11



**SK425** Women's Slim Fit Cuffed Joggers P.20



**SM531** Kids' Sustainable Fashion Hoody | P.4/5

## NEW

SF531 + SM531 (PG. 5)



SF MEN + UNISEX



SF042 Men's Stretch Polo P10



SF074 Men's Tartan Lounge Set P25



SF082 Men's Tartan Lounge Shorts P25



SF083 Men's Tartan Lounge Pants P24



SF086 Unisex Cuffed Lounge Pants P23



SF121 Men's Feel Good Stretch T P8

UNISEX



SF122 Men's Feel Good Stretch V P9



SF123 Men's Feel Good Stretch Vest P9



SF124 Men's Feel Good Stretch Long/Slv T P9



SF125 Men's Feel Good Stretch Roll Neck P9



SF130 Unisex Sustainable Generation T P6



SF140 Unisex Organic T P6

UNISEX

UNISEX



SF202 Unisex Striped T P11



SF203 Unisex Washed Band T Vest P12



SF204 Unisex Long/Slv Striped T P11



SF232 Men's High Neck Slash Armhole Vest P12



SF236 Men's Muscle Vest P13



SF258 Men's Longline T P13

UNISEX

UNISEX

UNISEX



SF271 Men's L/Sleeved Baseball T P11



SF425 Men's Slim Fit Cuffed Joggers P20



SF430 Unisex Sustainable Fashion Cuffed Joggers P5



SF432 Unisex Sustainable Fashion Sweat Shorts P7



SF470 Unisex All-In-One P20

UNISEX

UNISEX



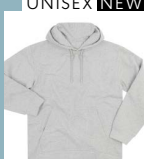
SF520 Unisex Washed Tour Sweat P19



SF525 Men's Unisex Slim Fit Sweat P19



SF530 Unisex Sustainable Fashion Sweat P4



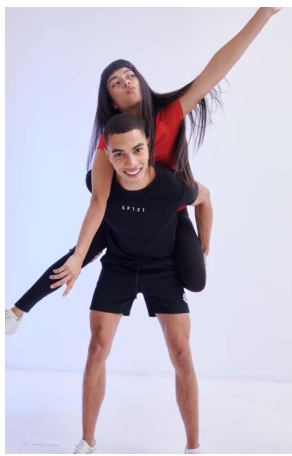
SF531 Unisex Sustainable Fashion Hoody P4/5

UNISEX NEW



SF560 Men's Brushed Check Casual Shirt P10

FEEL GOOD STRETCH TEES (PG.8)



\*DECORATED FOR DISPLAY PURPOSES ONLY, GARMENTS ARE SUPPLIED BLANK







{ PETA - APPROVED  
VEGAN }



SF-CLOTHING.COM

 SFSKINNIFITCLOTHING

 SF.PROMO.CLOTHING

 HENBURY BRANDS