

**RUSSELL**

TEAMWEAR  
2024

EN

# CONTENTS



## T-SHIRTS

|                                     |    |
|-------------------------------------|----|
| AUTHENTIC CLASSIC T & LONG SLEEVE T | 18 |
| CLASSIC HEAVYWEIGHT T               | 19 |
| PURE ORGANIC T & LONG SLEEVE T      | 20 |
| PURE ORGANIC V-NECK T               | 21 |
| PURE ORGANIC HEAVY T                | 21 |

## POLOS

|                             |    |
|-----------------------------|----|
| CLASSIC POLYCOTTON POLO     | 24 |
| HARDWEARING POLYCOTTON POLO | 24 |
| STRETCH POLO                | 25 |
| PURE ORGANIC POLO           | 26 |
| CLASSIC COTTON POLO         | 26 |
| ULTIMATE COTTON POLO        | 27 |
| AUTHENTIC ECO POLO          | 28 |



## SWEATSHIRTS & JOG PANTS

|                              |    |
|------------------------------|----|
| AUTHENTIC SWEATS             | 32 |
| PURE ORGANIC SWEATS          | 36 |
| CLASSIC SWEATSHIRT           | 38 |
| V-NECK SWEATSHIRT & CARDIGAN | 38 |
| HOODED SWEATSHIRT            | 39 |
| SWEAT PANTS                  | 39 |



## SHIRTS & BLOUSES

|                          |    |
|--------------------------|----|
| POLYCOTTON POPLIN SHIRT  | 42 |
| PURE COTTON POPLIN SHIRT | 44 |
| ULTIMATE STRETCH SHIRT   | 44 |
| STRETCH SHIRT            | 45 |
| OXFORD SHIRT             | 46 |
| WASHED OXFORD SHIRT      | 49 |



|                         |    |
|-------------------------|----|
| HERRINGBONE SHIRT       | 50 |
| ULTIMATE NON-IRON SHIRT | 52 |



## KNITWEAR

|                                    |    |
|------------------------------------|----|
| V-NECK KNITTED PULLOVER            | 56 |
| V-NECK KNITTED CARDIGAN            | 56 |
| V-NECK SLEEVELESS KNITTED PULLOVER | 57 |

## FLEECE

|                |    |
|----------------|----|
| OUTDOOR FLEECE | 58 |
|----------------|----|



## JACKETS

|                                 |    |
|---------------------------------|----|
| CROSS JACKET                    | 62 |
| HOODED NANO JACKET & BODYWARMER | 63 |
| BIONIC SOFTSHELL JACKET         | 66 |
| SOFTSHELL JACKET & GILET        | 67 |
| ESSENTIAL SOFTSHELL JACKET      | 68 |
| SMART SOFTSHELL JACKET & GILET  | 70 |
| SPORTSHELL 5000 JACKET          | 70 |
| HYDRAPLUS 2000 JACKET           | 71 |

## WORKWEAR

|  |    |
|--|----|
| HEAVY DUTY WORKWEAR T                              | 74 |
| HEAVY DUTY COLLAR & CREW NECK WORKWEAR SWEATSHIRTS | 74 |
| WORKWEAR POLYCOTTON TWILL TROUSERS & SHORTS        | 75 |
| HEAVY DUTY WORKWEAR TROUSERS                       | 75 |
| HEAVY DUTY WORKWEAR GILET                          | 76 |





DISCOVER HOW  
WE WORK

FOR A  
BETTER  
TOMORROW

# CERTIFICATIONS & MEMBERSHIPS

MORE INFORMATION ON OUR WEBSITE [RUSSELLEUROPE.COM](http://RUSSELLEUROPE.COM)

## SAFE PRODUCTS



STANDARD  
100

### OEKO-TEX® CERTIFICATION

All our garments – whether manufactured by us or outsourced – are tested for harmful substances and certified according to STANDARD 100 by OEKO-TEX®. [www.Oeko-Tex.com](http://www.Oeko-Tex.com)

## RESPECTFUL WORKPLACES



Russell Europe is member of amfori, the leading global business association for open and sustainable trade. We improve the social performance of our supply chain via amfori BSCI. For more information visit [www.amfori.org](http://www.amfori.org)

## SUSTAINABLE SOURCING



Russell Europe is committed to improving cotton farming practices globally and is a member of Better Cotton, an organisation whose mission is to help cotton communities survive and thrive, while protecting and restoring the environment. We are proud to be members of an organisation that makes global cotton production better for the people who produce it, better for the environment it grows in and better for the sector's future. [www.bettercotton.org](http://www.bettercotton.org)



Driving awareness on environmental issues and quality are the core values of our Russell Pure Organic® products. We want to support your efforts in making the world a better place by offering eco-friendly, long lasting and fair produced clothing.

# MADE IN OUR OWN FACILITIES



Unlike many other brands, Russell Europe produces the majority of its T-Shirts in its own production facilities in Morocco. We are proud to have this opportunity and to have a fantastic and dedicated team in Morocco.



## FAIR COMPENSATION

We believe every worker has a right to compensation for a regular work week that is sufficient to meet the worker's basic needs and provide some discretionary income.

We believe overtime should not be required to accomplish this.

## WE REACHED OUR WATER TARGET EARLY

Since 2018, we have achieved a 13.8% reduction in water intensity, or the amount of water used per pound of fabric — achieving our goal of a 10% reduction ahead of 2030.



## ZERO WASTE

Our sustained commitment to waste reduction means all our facilities are zero waste. This vital achievement is made possible through a system of process optimisation at every location that looks to better utilise all fabric — from cutting patterns that minimise scraps to implementing new design software to reduce samples.



# SO CLOSE

**IMMEDIATE VICINITY TO EUROPE MEANS:**

- » shorter transport routes\*
- » lower CO<sup>2</sup> footprint\*
- » faster availability\*
- » Direct container shipments to our customers

\* over 80% shorter transport routes. For comparison: Casablanca (MA) - Rotterdam (NL) approx. 3,100 km, Chittagong (BD) - Rotterdam (NL) approx. 16,500 km, Dalian (CN) - Rotterdam (NL) approx. 23,200 km

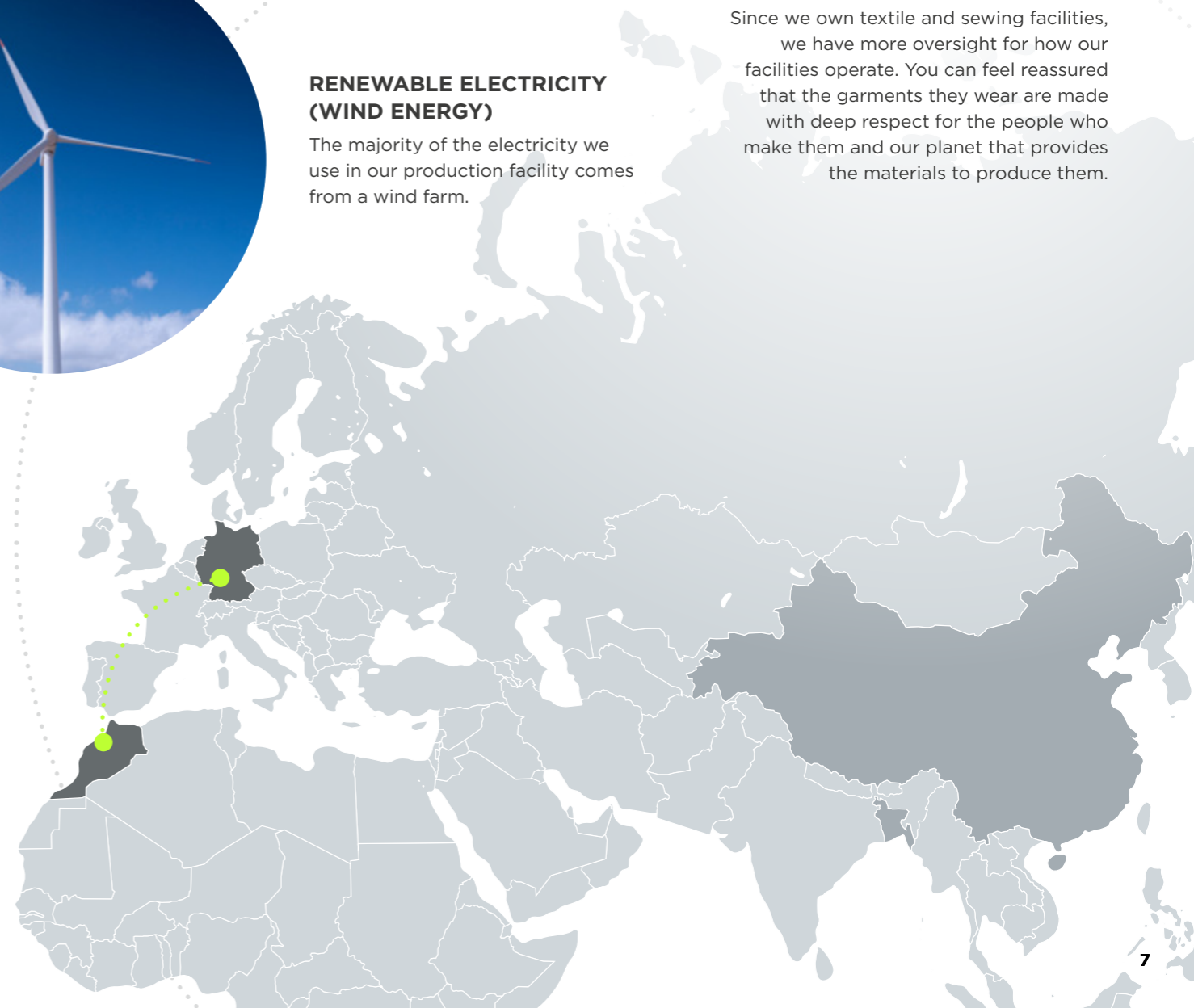


## RENEWABLE ELECTRICITY (WIND ENERGY)

The majority of the electricity we use in our production facility comes from a wind farm.

## CLOSE TO HOME!

Since we own textile and sewing facilities, we have more oversight for how our facilities operate. You can feel reassured that the garments they wear are made with deep respect for the people who make them and our planet that provides the materials to produce them.



# SOURCING & TRANSPARENCY



Everything that we do not manufacture ourselves, we source from our long-standing production partners.



## SUPPLIER TRANSPARENCY

Today, we already disclose 100% of our Tier 1 suppliers, owned facilities and licensees' factories.



## OUR PARTNERS

### ALL OUR SUPPLIERS

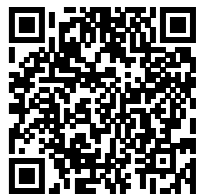
- » are members of Amfori BSCI
- » produce Oeko-Tex® certified products
- » commit to adhering to our strict Code of Conduct



## SOURCING DONE RIGHT

Our goal is to have full transparency on all our products right back to the raw materials. We have already mapped our cotton supply back to raw materials.

We have a commitment to map our supply chain back to raw materials by 2025. With 45% of engaged suppliers mapped to raw materials in 2022, we are on track to reach our goal.



Download Sustainability Report

NEW!

# AUTHENTIC ECO POLO

570M



“  
Perfect for  
many corporate  
wear uses from  
hospitality to  
medical and  
workwear!”

NEW  
COLOUR  
PETROL  
BLUE



AVAILABLE IN **9 COLOURS**  
SIZES: **XS - 3XL**

For more information see page 28-29.



The Authentic Eco Polo is made from recycled polyester and cotton and is manufactured in our own production facility in the immediate vicinity of Europe.

Thanks to the sustainable materials, the extremely short transport routes and full control over production, we have developed one of the most sustainable polo shirts.

NEW!



AVAILABLE IN  
**BLACK, FRENCH NAVY AND IRON GREY**  
SIZES: **XS - 3XL**

The outer face material is made from 94% recycled polyester and 6% elastane, and the fleece lining is 100% recycled polyester. The jacket is treated with a fluorine and PFC-free finish from the Bionic-Finish-Eco® brand.



For more informations see page 68-69.



# ESSENTIAL SOFTSHELL JACKET

420M



The Essential Softshell Jacket is a 2-layer softshell jacket in a classic design. The sustainable Essential Softshell Jacket is the perfect companion for cooler days and an absolute must-have for modern corporate and promotional clothing.



NEW!



Discover the new Russell Authentics™ featuring some of our most valuable products under one roof!

Enjoy the all **NEW Authentic Eco Polo 570M**, the Authentic Classic T-Shirts (180M/B/L) and all of the tried and tested Authentic Sweats, such as The Authentic Sweatshirt, our best-selling Hoodies, Sweat Jackets and ¼-Zips, as well as our Jog Pants.



# T-SHIRTS



## THE TEAMWEAR STAPLE

From Classic T-Shirts to Pure Organic and Workwear, we have the perfect selection in brilliant colours and sizes for everyone - big or small. If you're looking for the ultimate T-Shirt, Russell Ts are the right choice for you!



## AUTHENTIC CLASSIC T & CLASSIC LONG SLEEVE T

180



### MATERIAL / WEIGHT

100% Ringspun Cotton  
Light Oxford: 93% Cotton, 7% Viscose  
White: 175g/m<sup>2</sup>, Colours: 180g/m<sup>2</sup>

### PACKING

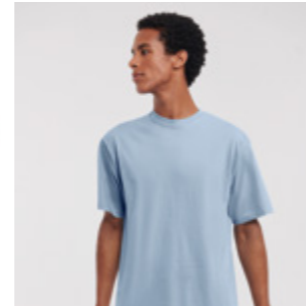
Pack 12/Carton 72

### 180M AUTHENTIC CLASSIC T SIZES XS-4XL

- » Classic Fit
- » Single Jersey
- » Shoulder to shoulder neck tape

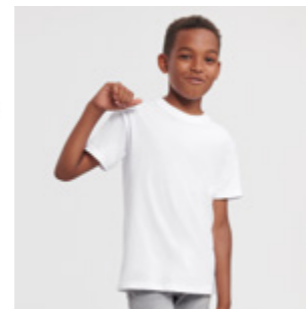
- » 1x1 rib knit collar with top stitch
- » Tubular construction (Light Oxford colour has side seamed construction)

3XL & 4XL only available in Black, Bottle Green, Bright Royal, French Navy, White, Classic Red, Convoy Grey, Natural, Olive, Mocha, Indigo Blue and Mineral Blue



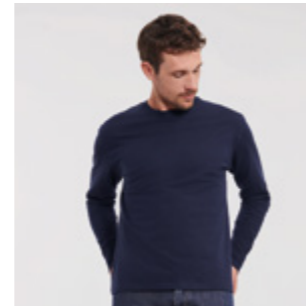
### 180B KIDS AUTHENTIC CLASSIC T SIZES 1-12 YEARS

- » Classic Fit
- » Single Jersey
- » Shoulder to shoulder neck tape
- » 1x1 rib knit collar with top stitch
- » Name label



### 180L AUTHENTIC CLASSIC LONG SLEEVE T SIZES XS-4XL

- » Classic Fit
- » Single Jersey
- » Shoulder to shoulder neck tape
- » 1x1 rib knit collar with top stitch
- » Tubular construction



180B

## CLASSIC HEAVYWEIGHT T

215



### MATERIAL / WEIGHT

100% Combed Ringspun Cotton  
White: 210g/m<sup>2</sup>, Colours: 215g/m<sup>2</sup>

### PACKING

Pack 12/Carton 72

### 215M CLASSIC HEAVYWEIGHT T SIZES S-2XL

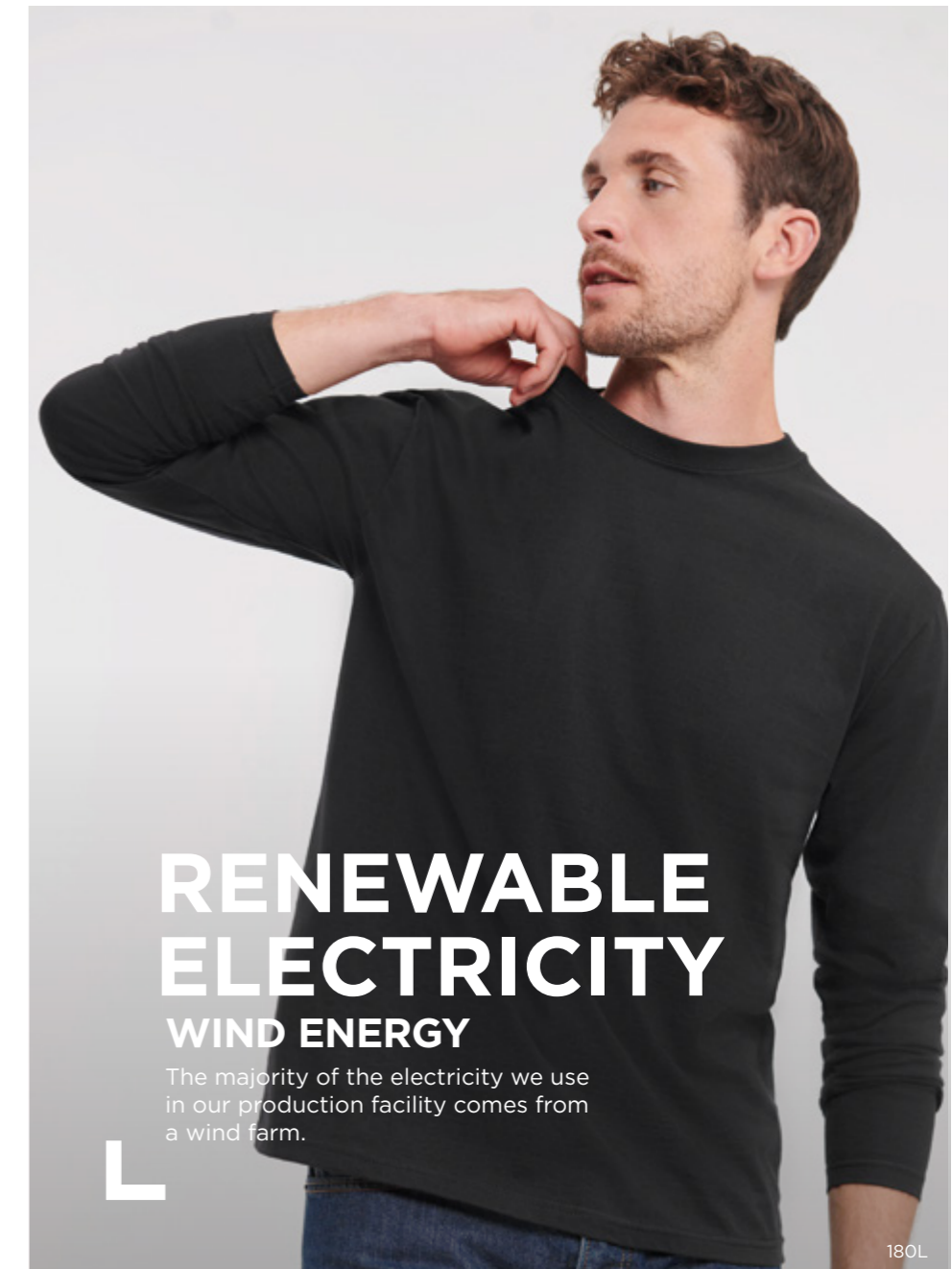
- » Classic Fit
- » Single Jersey
- » Shoulder to shoulder neck tape
- » 1x1 rib knit collar with top stitch
- » Tubular construction



180B



215M



# RENEWABLE ELECTRICITY

## WIND ENERGY

The majority of the electricity we use in our production facility comes from a wind farm.



180L

## PURE ORGANIC T & LONG SLEEVE T

108 • 100



### MATERIAL / WEIGHT

100% Combed Ringspun Cotton (organic)  
Light Oxford: 97% Combed Ringspun Cotton (organic), 3% Viscose  
160g/m<sup>2</sup>

### PACKING

Pack 12/Carton 72  
108B, 100M: Pack 6/Carton 36

### 108M MEN'S PURE ORGANIC T SIZES XS-3XL

- » Contemporary shaped fit
- » Single Jersey
- » Custom-developed shoulder to shoulder tape offering greater stability and an elegant look
- » Label free: Small size label in the neck (incl. product number)
- » Narrow collar band with LYCRA®
- » Comfortable cool and light texture
- » Smooth surface for best print results



### 108F LADIES' PURE ORGANIC T SIZES XS-2XL

- » Contemporary shaped fit
- » Single Jersey
- » Custom-developed shoulder to shoulder tape offering greater stability and an elegant look
- » Label free: Small size label in the neck (incl. product number)
- » Narrow collar band with LYCRA®
- » Comfortable cool and light texture
- » Smooth surface for best print results



### 108B CHILDREN'S PURE ORGANIC T SIZES 3-14 YEARS

- » Contemporary shaped fit
- » Single Jersey
- » Custom-developed shoulder to shoulder tape offering greater stability and an elegant look
- » Label free: Small size label in the neck (incl. product number)
- » Narrow collar band with LYCRA®
- » Comfortable cool and light texture
- » Smooth surface for best print results



### 100M PURE ORGANIC LONG SLEEVE T SIZES XS-3XL

- » Contemporary shaped fit
- » Single Jersey
- » Custom-developed shoulder to shoulder tape offering greater stability and an elegant look
- » Label free: Small size label in the neck (incl. product number)
- » Narrow collar band with LYCRA®
- » Comfortable cool and light texture
- » Smooth surface for best print results



## PURE ORGANIC V-NECK T

103



### MATERIAL / WEIGHT

100% Combed Ringspun Cotton (organic)  
160g/m<sup>2</sup>

### PACKING

Pack 6/Carton 36

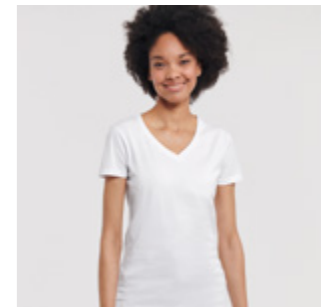
### 103M MEN'S PURE ORGANIC V-NECK T SIZES XS-3XL

- » Contemporary shaped fit
- » Single Jersey
- » Custom-developed shoulder to shoulder tape offering greater stability and an elegant look
- » Label free: Small size label in the neck (incl. product number)
- » Classic narrow V-neck with cotton/LYCRA® rib
- » Comfortable cool and light texture
- » Smooth surface for best print results



### 103F LADIES' PURE ORGANIC V-NECK T SIZES XS-2XL

- » Contemporary shaped fit
- » Single Jersey
- » Custom-developed shoulder to shoulder tape offering greater stability and an elegant look
- » Label free: Small size label in the neck (incl. product number)
- » Classic narrow V-neck with cotton/LYCRA® rib
- » Comfortable cool and light texture
- » Smooth surface for best print results



## PURE ORGANIC HEAVY T

118



### MATERIAL / WEIGHT

100% Combed Ringspun Cotton (organic)  
190g/m<sup>2</sup>

### PACKING

Pack 6/Carton 36

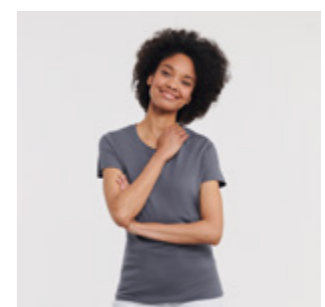
### 118M MEN'S PURE ORGANIC HEAVY T SIZES XS-3XL

- » Contemporary shaped fit
- » Single Jersey
- » Custom-developed shoulder to shoulder tape offering greater stability and an elegant look
- » Label free: Small size label in the neck (incl. product number)
- » Narrow collar band with LYCRA® and single top stitch
- » Comfortable cool texture despite heavier weight
- » Smooth surface for best print results



### 118F LADIES' PURE ORGANIC HEAVY T SIZES XS-2XL

- » Contemporary shaped fit
- » Single Jersey
- » Custom-developed shoulder to shoulder tape offering greater stability and an elegant look
- » Label free: Small size label in the neck (incl. product number)
- » Narrow collar band with LYCRA® and single top stitch
- » Comfortable cool texture despite heavier weight
- » Smooth surface for best print results





SPORTINESS MEETS ELEGANCE

Its success story is no surprise.

Light and durable yet elegant without being overdressed, a polo shirt is a true all-rounder and a score for any team outfit.



## CLASSIC POLYCOTTON POLO

### 539



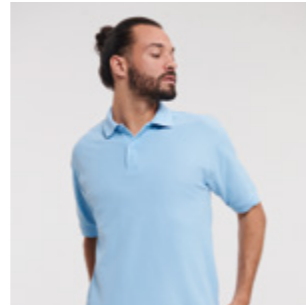
**MATERIAL / WEIGHT**  
65% Polyester, 35% Ringspun Cotton  
White: 210g/m<sup>2</sup>, Colours: 215g/m<sup>2</sup>

**PACKING**  
Pack 6/ Carton 36

#### 539M MEN'S CLASSIC POLYCOTTON POLO

##### SIZES XS-6XL

- » Classic Fit
- » Fine honeycomb pique structure
- » Double yarn construction
- » Reinforced shoulder seams with neck tape
- » Classic style flat knit cuffs
- » Twin needle hem at bottom for added stability



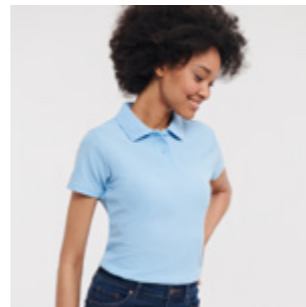
3XL-4XL only available in Bottle Green, Black, Bright Royal, Classic Red, French Navy, Light Oxford and White. 5XL & 6XL only available in Black, Bright Royal, French Navy and White



#### 539F LADIES' CLASSIC POLYCOTTON POLO

##### SIZES XS-4XL

- » Classic Fit
- » Fine honeycomb pique structure
- » Double yarn construction
- » Reinforced shoulder seams with neck tape
- » Open sleeve with twin needle hem
- » Twin needle hem at bottom for added stability



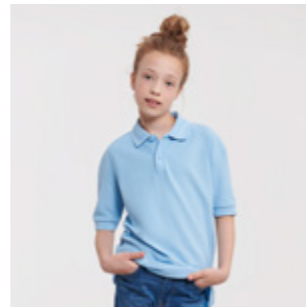
3XL & 4XL only available in Bottle Green, Bright Royal and French Navy



#### 539B CHILDREN'S CLASSIC POLYCOTTON POLO

##### SIZES 1-12 YEARS

- » Classic Fit
- » Fine honeycomb pique structure
- » Double yarn construction
- » Reinforced shoulder seams with neck tape
- » Classic style flat knit cuffs
- » Name label
- » Twin needle hem at bottom for added stability



## HARDWEARING POLYCOTTON POLO

### 599



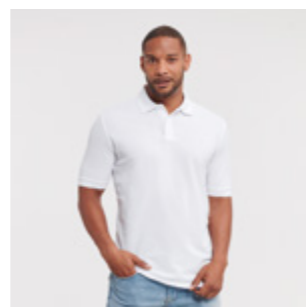
**MATERIAL / WEIGHT**  
65% Polyester, 35% Ringspun Cotton  
White: 210g/m<sup>2</sup>, Colours: 215g/m<sup>2</sup>

**PACKING**  
Pack 6/ Carton 36

#### 599M HARDWEARING POLYCOTTON POLO

##### SIZES XS-6XL

- » Classic fit with side vents
- » Side vents for ease of fit
- » Reinforced shoulder seams with neck tape
- » Flat knit collar and cuffs with double ripple effect
- » Twin needle hem at bottom for added stability



5XL & 6XL only available in Black, Bottle Green, Bright Royal, French Navy and White



## STRETCH POLO

### 566 • 567



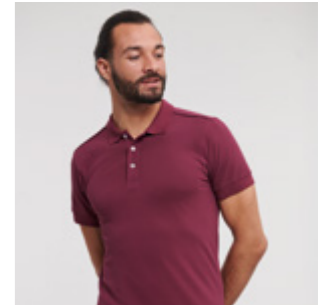
**MATERIAL / WEIGHT**  
95% Combed Ringspun Cotton; 5% LYCRA®  
Light Oxford: 88% Combed Ringspun Cotton,  
7% Viscose, 5% LYCRA®  
White: 205g/m<sup>2</sup>, Colours: 210g/m<sup>2</sup>

**PACKING**  
Pack 6/ Carton 36

#### 566M MEN'S FITTED STRETCH POLO

##### FIT FITTED • SIZES S-3XL

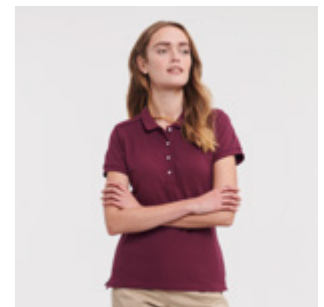
- » Slim leaf collar
- » Ribbed cuffs
- » Strip of self-colour fabric along shoulder seam
- » Shorter side vents with herringbone tape
- » Soft handfeel
- » Contrast buttons



#### 566F LADIES' FITTED STRETCH POLO

##### FIT FITTED • SIZES XS-2XL

- » Slim leaf collar
- » Ribbed cuffs
- » Strip of self-colour fabric along shoulder seam
- » Shorter side vents with herringbone tape
- » Soft handfeel
- » Slimmer, 4 button placket
- » Contrast buttons



#### 567F LADIES' TAILORED STRETCH POLO

##### FIT TAILORED • SIZES XS-2XL

- » Slim leaf collar
- » Ribbed cuffs
- » Strip of self-colour fabric along shoulder seam
- » Shorter side vents with herringbone tape
- » Soft handfeel
- » Slimmer, 4 button placket
- » Dyed-to-match buttons
- » Label free: Small size label in the neck (incl. product number)



566M • 566F

## PURE ORGANIC POLO

### 508



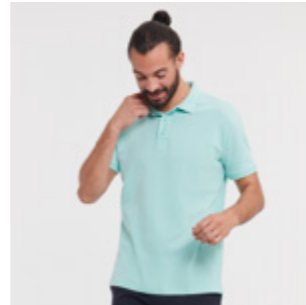
**MATERIAL / WEIGHT**  
100% Combed Ringspun Cotton (organic)  
215g/m<sup>2</sup>

**PACKING**  
Pack 6/ Carton 36

#### 508M MEN'S PURE ORGANIC POLO

##### SIZES S-3XL

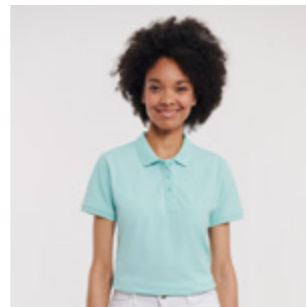
- » Contemporary shaped fit
- » Piqué
- » Distinguished front placket with cross stitched element to provide best look and better placket stability
- » Smooth and even surface for best print results
- » Label free: Small size label in the neck (incl. product number)
- » Dyed-to-match buttons



#### 508F LADIES' PURE ORGANIC POLO

##### SIZES XS-2XL

- » Contemporary shaped fit
- » Piqué
- » Distinguished front placket with cross stitched element to provide best look and better placket stability
- » Smooth and even surface for best print results
- » Label free: Small size label in the neck (incl. product number)
- » Dyed-to-match buttons



## CLASSIC COTTON POLO

### 569



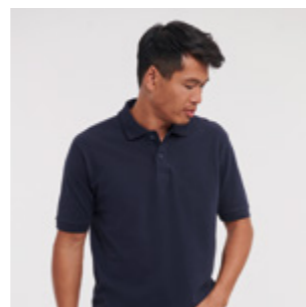
**MATERIAL / WEIGHT**  
100% Ringspun Cotton  
White: 195g/m<sup>2</sup>, Colours: 200g/m<sup>2</sup>

**PACKING**  
Pack 6/ Carton 36

#### 569M MEN'S CLASSIC COTTON POLO

##### SIZES XS-4XL

- » Classic fit with side vents
- » Side vents for ease of fit
- » Reinforced shoulder seams with neck tape
- » Classic style flat knit cuffs
- » Twin needle hem at bottom for added stability



XS only available in French Navy and White. 3XL & 4XL only available in Black, French Navy and White



## ULTIMATE COTTON POLO

### 577



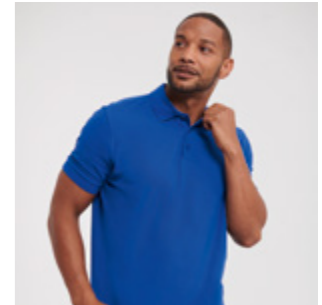
**MATERIAL / WEIGHT**  
100% Combed Ringspun Cotton  
White: 210g/m<sup>2</sup>, Colours: 215g/m<sup>2</sup>

**PACKING**  
Pack 6/ Carton 36

#### 577M MEN'S ULTIMATE COTTON POLO

##### SIZES XS-4XL

- » Classic Fit
- » Contemporary cut
- » Fine honeycomb pique structure
- » Reinforced shoulder seams with herringbone neck tape
- » Side vents with internal herringbone taping for added stability and better fit
- » Classic style flat knit cuffs
- » Pre-shrunk and suitable for wash up to 60°C



577M

NEW!



The new Authentic Eco Polo shirt features a wide range of 9 colours to complement any outfit including the completely new Petrol Blue!

Made from recycled polyester and cotton and being produced with short transport routes in our own facilities in Morocco, the new Authentic Eco Polo is our most sustainable polo yet!

## AUTHENTIC ECO POLO

570



### MATERIAL / WEIGHT

65% Polyester (recycled), 35% Ringspun Cotton  
White: 170 g/m<sup>2</sup>, Colours: 180 g/m<sup>2</sup>

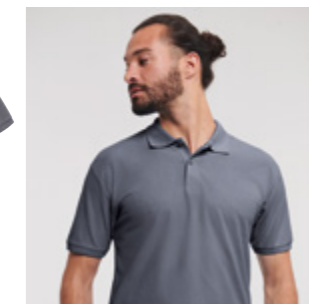
### PACKING

Pack 6/ Carton 36



### 570M AUTHENTIC ECO POLO SIZES XS-3XL

- » Classic Fit
- » Tear-Away label
- » Dyed-to-match buttons
- » 2-button placket
- » Reinforced shoulder seams with neck tape



570M

# SWEATSHIRTS



## OUR INVENTION THAT STARTED IT ALL

When Benjamin Russell introduced his design for an all cotton sweater, he pioneered sports teamwear forever. This original spirit of the sweatshirt remains a key moment in team culture.





# AUTHENTIC SWEATS

262 • 271 • 265 • 266 • 267 • 270 • 268



### MATERIAL / WEIGHT

80% Combed Ringspun Cotton, 20% Polyester  
100% cotton face yarn (3-thread-construction)  
280g/m<sup>2</sup>

### PACKING

Pack 3/ Carton 24  
Pack 6/ Carton 36 (262M)

## 262M THE AUTHENTIC SWEAT SIZES XS-5XL

- » Straighter cut for a modern look
- » 100% cotton face yarn provides the best surface for decoration
- » Herringbone neck tape for comfort and stability
- » Side seams improve fit

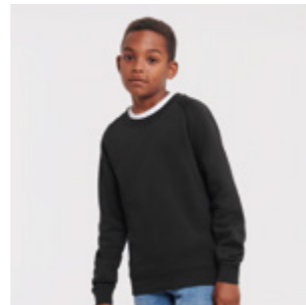


4XL only available in Black, French Navy, Light Oxford and Convoy Grey. 5XL only available for Black and French Navy



## 271B CHILDREN'S AUTHENTIC RAGLAN SWEAT SIZES 3-14 YEARS

- » Straighter cut for a modern look
- » 100% cotton face yarn provides the best surface for decoration
- » Herringbone neck tape for comfort and stability
- » Side seams improve fit
- » Raglan sleeve solution for better movement and adding additional space to the wearer



## 265M MEN'S AUTHENTIC HOODED SWEAT SIZES XS-5XL

- » Straighter cut for a modern look
- » 100% cotton face yarn provides the best surface for decoration
- » Flat, chunky drawcords
- » Double layer hood with cover seam drawcord channel
- » Kangaroo pockets



4XL only available in Black, French Navy, Light Oxford and Convoy Grey. 5XL only available for Black and French Navy



## 265F LADIES' AUTHENTIC HOODED SWEAT SIZES XS-2XL

- » Modern feminine tailored fit
- » 100% cotton face yarn provides the best surface for decoration
- » Slimmer shoulders and leaner arms
- » Flat, chunky drawcords
- » Double layer hood with cover seam drawcord channel
- » Kangaroo pockets



2XL only available in Black, French Navy and Light Oxford



## 265B CHILDREN'S AUTHENTIC HOODED SWEAT SIZES 3-14 YEARS

- » Straighter cut for a modern look
- » 100% cotton face yarn provides the best surface for decoration
- » Flat, chunky drawcords
- » Double layered hood
- » Kangaroo pockets
- » No drawcords



## 266M MEN'S AUTHENTIC ZIPPED HOOD JACKET SIZES XS-5XL

- » Straighter cut for a modern look
- » 100% cotton face yarn provides the best surface for decoration
- » Flat, chunky drawcords
- » Double layer hood with cover seam drawcord channel
- » Side seam pockets
- » YKK Metal (Antique Silver) Full Zipper
- » Kissing (covered) zip for full cross body decoration



4XL only available in Black, French Navy, Light Oxford and Convoy Grey. 5XL only available for Black and French Navy



## 266F LADIES' AUTHENTIC ZIPPED HOOD JACKET SIZES XS-2XL

- » Modern feminine tailored fit
- » 100% cotton face yarn provides the best surface for decoration
- » Flat, chunky drawcords
- » Double layer hood with cover seam drawcord channel
- » Side seam pockets
- » YKK Metal (Antique Silver) Full Zipper
- » Kissing (covered) zip for full cross body decoration



2XL only available in Black, French Navy and Light Oxford



## 266B CHILDREN'S AUTHENTIC ZIPPED HOOD JACKET SIZES 3-14 YEARS

- » Straighter cut for a modern look
- » 100% cotton face yarn provides the best surface for decoration
- » No drawcords
- » Double layered hood
- » Side seam pockets
- » YKK Metal (Antique Silver) Full Zipper
- » Kissing (covered) zip for full cross body decoration
- » Top stitching for a greater seam resistance



**OEKO-TEX®**

**100% CERTIFIED**

All Russell products are Oeko-Tex® Standard 100 (class II) certified. 08-5941 Shirley

265B • 266M • 271B

**267M MEN'S AUTHENTIC SWEAT JACKET**  
SIZES XS-4XL

- » Straighter cut for a modern look
- » 100% cotton face yarn provides the best surface for decoration
- » Herringbone neck tape for comfort and stability
- » Side seam pockets
- » Welt pocket workmanship for a smooth and soft pocket entry
- » Self-fabric cadet collar
- » YKK Metal (Antique Silver) Full Zipper



4XL only available in Black, French Navy and Light Oxford



**267F LADIES' AUTHENTIC SWEAT JACKET**  
SIZES XS-XL

- » Modern feminine tailored fit
- » 100% cotton face yarn provides the best surface for decoration
- » Herringbone neck tape for comfort and stability
- » Side seam pockets
- » Welt pocket workmanship for a smooth and soft pocket entry
- » Self-fabric cadet collar
- » YKK Metal (Antique Silver) Full Zipper



**270M AUTHENTIC QUARTER ZIP SWEAT**  
SIZES XS-4XL

- » 100% cotton face yarn provides the best surface for decoration
- » Herringbone neck tape for comfort and stability with front facing shoulder seams
- » Brushed fleece
- » Kissing (covered) zip for full cross body decoration
- » Self-fabric cadet collar
- » YKK Metal (Antique Silver) ¼ zip



**268M MEN'S AUTHENTIC JOG PANTS**  
SIZES S-2XL

- » Contemporary fit and modern design
- » 100% cotton face yarn provides the best surface for decoration
- » Self-fabric welt pockets with concealed zip fastening
- » Back patch pocket
- » Flat, chunky drawcords
- » Rib at cuff and waistband



262M



265M • 268M



262M



265M



266M • 266F

THE CONSCIOUS COLLECTION

Made from 100% organic cotton, the Pure Organic® Collection excels in both design and quality.

**PURE ORGANIC SWEATS**

208 • 209



**MATERIAL / WEIGHT**  
100% Combed Ringspun Cotton (organic)  
300g/m<sup>2</sup>

**PACKING**  
Pack 3/ Carton 24

**208M PURE ORGANIC REVERSIBLE SWEAT**  
SIZES XS-3XL

- » Contemporary fit and modern design
- » Unbrushed Twill-Terry
- » Label free on neck: inner small pocket on hem is hiding size and care labels
- » Ribbed cuffs, neckline and body hem with LYCRA®
- » Soft handfeel
- » Matching herringbone tape at inside back neck



**209M PURE ORGANIC HIGH COLLAR HOODED SWEAT**  
SIZES XS-3XL

- » Contemporary fit and modern design
- » Unbrushed Twill-Terry
- » Label free: Small size label in the neck (incl. product number)
- » Elastane on ribbed cuffs and waistband trim to retain shape and smart appearance
- » Perfect high collar hood construction with two piece workmanship for better print positioning
- » Half moon neck insert (locker patch) for individualisation



## CLASSIC SWEATSHIRT

762



### MATERIAL / WEIGHT

50% Combed Ringspun Cotton, 50% Polyester  
295g/m<sup>2</sup>

### PACKING

Pack 6/ Carton 36

### 762M CLASSIC SWEATSHIRT SIZES XS-4XL

- » SpotShield™ stain resistant coating
- » Tubular body construction for added stability
- » Herringbone neck tape for comfort
- » Raglan sleeve
- » 1x1 rib trim with elastane on hem and cuffs



3XL & 4XL only available in Bright Royal, Bottle Green and French Navy



### 762B CHILDREN'S CLASSIC SWEATSHIRT SIZES 1-12 YEARS

- » SpotShield™ stain resistant coating
- » Tubular body construction for added stability
- » Herringbone neck tape for comfort
- » Raglan sleeve
- » 1x1 rib trim with elastane on hem and cuffs
- » Name label



## V-NECK SWEATSHIRT & CARDIGAN

272 • 273



### MATERIAL / WEIGHT

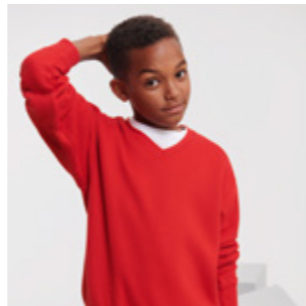
50% Combed Ringspun Cotton, 50% Polyester  
295g/m<sup>2</sup>

### PACKING

272B: Pack 3/ Carton 36  
273B: Pack 3/ Carton 24

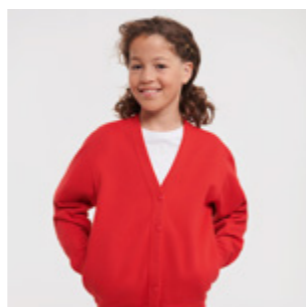
### 272B CHILDREN'S V-NECK SWEATSHIRT SIZES 3-12 YEARS

- » The V-Neck Sweat and Cardigan combine smartness with style and comfort
- » Ideal to wear with polo shirt, open neck shirt or shirt & tie
- » Ringspun cotton for softer hand feel
- » Outstanding performance - wash after wash
- » Set-in sleeves and side seams
- » Name label



### 273B CHILDREN'S SWEATSHIRT CARDIGAN SIZES 3-12 YEARS

- » The V-Neck Sweat and Cardigan combine smartness with style and comfort
- » Ideal to wear with polo shirt, open neck shirt or shirt & tie
- » Ringspun cotton for softer hand feel
- » Outstanding performance - wash after wash
- » Set-in sleeves and side seams
- » Side seam pockets
- » Name label



## HOODED SWEATSHIRT

575



### MATERIAL / WEIGHT

50% Combed Ringspun Cotton, 50% Polyester  
295g/m<sup>2</sup>

### PACKING

Pack 6/ Carton 24

### 575M HOODED SWEATSHIRT SIZES XS-2XL

- » Straighter cut for a modern look
- » Herringbone neck tape for comfort and stability
- » Double layer hood with cover seam drawcord channel
- » shoulders and leaner arms
- » Flat, chunky drawcords
- » Kangaroo pocket with bartacks



### 575B CHILDREN'S HOODED SWEATSHIRT SIZES 3-12 YEARS

- » Straighter cut for a modern look
- » Herringbone neck tape for comfort and stability
- » Double layer hood with cover seam drawcord channel
- » Slimmer shoulders and leaner arms
- » No drawcord in line with health and safety legislation
- » Kangaroo pocket with bartacks



## SWEAT PANTS

750



### MATERIAL / WEIGHT

50% Combed Ringspun Cotton, 50% Polyester  
295g/m<sup>2</sup>

### PACKING

Pack 6/ Carton 36

### 750B CHILDREN'S SWEAT PANTS SIZES 3-12 YEARS

- » Elasticated waistband and leg ends
- » Side pockets
- » No drawcord in line with health and safety legislation



**S H I R T S &  
B L O U S E S**



FROM RUGGED BUSINESS CASUAL TO  
SMART LOOKS AND FORMAL STYLES

Russell Shirts, Blouses and Knitwear cover the full range of needs as diverse as  
the whole of your team.



# POLYCOTTON POPLIN SHIRT

934 • 935 • 924



EC Easy Care

**MATERIAL / WEIGHT**  
65% Polyester, 35% Cotton Poplin  
White: 110g/m<sup>2</sup>, Colours: 105g/m<sup>2</sup>

**PACKING**  
Pack 1/ Carton 12

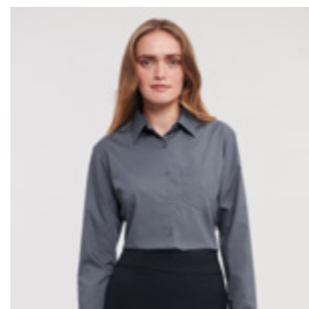
## 934M MEN'S LONG SLEEVE CLASSIC POLYCOTTON POPLIN SHIRT FIT CLASSIC • SIZES S-4XL

- » Easy Care
- » Left chest pocket
- » Curved hem
- » Stiffened Kent boned collar
- » Back yoke with 2 side pleats
- » Rounded 2 button adjustable cuffs



## 934F LADIES' LONG SLEEVE CLASSIC POLYCOTTON POPLIN SHIRT FIT CLASSIC • SIZES XS-4XL

- » Easy Care
- » Left chest pocket
- » Curved hem
- » Classic Collar
- » Rounded 2 button adjustable cuffs



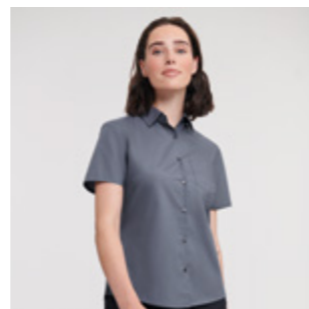
## 935M MEN'S SHORT SLEEVE CLASSIC POLYCOTTON POPLIN SHIRT FIT CLASSIC • SIZES S-4XL

- » Easy Care
- » Left chest pocket
- » Curved hem
- » Stiffened Kent boned collar
- » Back yoke with 2 side pleats



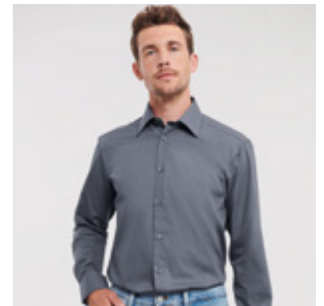
## 935F LADIES' SHORT SLEEVE CLASSIC POLYCOTTON POPLIN SHIRT FIT CLASSIC • SIZES XS-4XL

- » Easy Care
- » Left chest pocket
- » Curved hem
- » Classic Collar



## 924M MEN'S LONG SLEEVE TAILORED POLYCOTTON POPLIN SHIRT FIT TAILORED • SIZES S-4XL

- » Easy Care
- » Curved hem
- » Stiffened Kent boned collar
- » Rounded 2 button adjustable cuffs with option for cuff links



## 924F LADIES' LONG SLEEVE FITTED POLYCOTTON POPLIN SHIRT FIT FITTED • SIZES XS-4XL

- » Easy Care
- » Curved hem
- » Stylish yoke design
- » Concealed placket
- » Darts on bust, front hem and back panel for fitted shape
- » Decorative top stitch on darts
- » Rounded double buttoned cuffs



935F

# 100% TRANSPARENCY

Today we already disclose 100% of our Tier 1 suppliers, owned facilities and licensees' factories.



934F

## PURE COTTON POPLIN SHIRT

936



EC Easy Care

**MATERIAL / WEIGHT**  
100% Cotton Poplin  
White: 120g/m<sup>2</sup>, Colours: 125g/m<sup>2</sup>

**PACKING**  
Pack 1/ Carton 12

### 936M MEN'S LONG SLEEVE CLASSIC PURE COTTON POPLIN SHIRT FIT CLASSIC • SIZES S-4XL

- » Easy Care
- » Left chest pocket
- » Classic Kent boned collar
- » Back yoke with 2 side pleats
- » Rounded 2 button adjustable cuffs
- » Straight hem

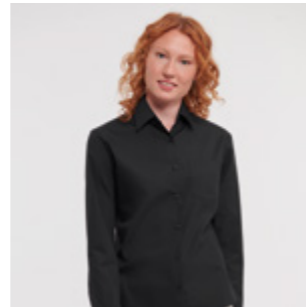


30 36



### 936F LADIES' LONG SLEEVE CLASSIC PURE COTTON POPLIN SHIRT FIT CLASSIC • SIZES XS-4XL

- » Easy Care
- » Left chest pocket
- » Classic Collar
- » Rounded 2 button adjustable cuffs
- » Curved hem



30 36



## ULTIMATE STRETCH SHIRT

960



EC Easy Care

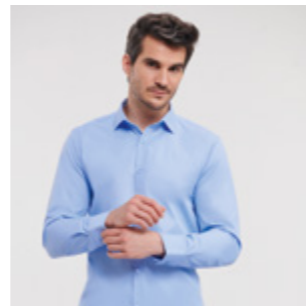


**MATERIAL / WEIGHT**  
75% Cotton, 25% Elastomultiester  
(LYCRA® T400® fibre) Poplin  
White: 125g/m<sup>2</sup>, Colours: 130g/m<sup>2</sup>

**PACKING**  
Pack 1/ Carton 12

### 960M MEN'S LONG SLEEVE FITTED ULTIMATE STRETCH SHIRT FIT FITTED • SIZES S-4XL

- » Easy Care, durable fabric and longer fit
- » Excellent shape retention for a lasting fit
- » Moisture management for cool comfort
- » Stiffened New Kent boned collar
- » Square edged 2 button adjustable cuffs, with option for cuff links



36 30 NB BZ



### 960F LADIES' LONG SLEEVE FITTED ULTIMATE STRETCH SHIRT FIT FITTED SIZES XS-4XL

- » Easy Care, durable fabric and longer fit
- » Excellent shape retention for a lasting fit
- » Moisture management for cool comfort
- » Neat modern collar
- » Princess cut
- » Cocktail cuffs with 2 button fastening with extended gauntlet



36 30 NB BZ



## STRETCH SHIRT

946 • 947



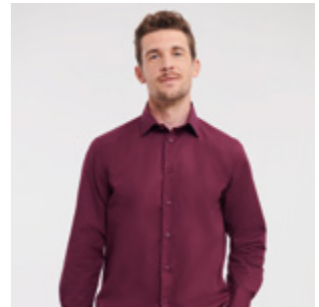
EC Easy Care

**MATERIAL / WEIGHT**  
97% Cotton, 3% Elastane Poplin  
140g/m<sup>2</sup>

**PACKING**  
Pack 1/ Carton 12

### 946M MEN'S LONG SLEEVE FITTED STRETCH SHIRT FIT FITTED • SIZES S-4XL

- » Easy Care
- » Curved hem
- » Stiffened New Kent boned collar
- » Mitred double buttoned cuffs

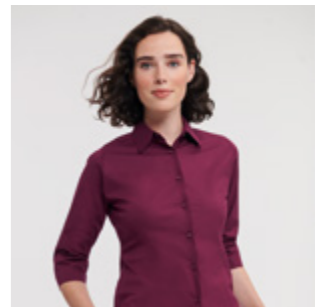


30 36 CQ PT



### 946F LADIES' 3/4 SLEEVE FITTED STRETCH SHIRT FIT FITTED • SIZES XS-2XL

- » Easy Care
- » Curved hem
- » Darts on bust front hem and back panel for fitted shape
- » Stylish elbow length ¾ sleeve with split cuffs

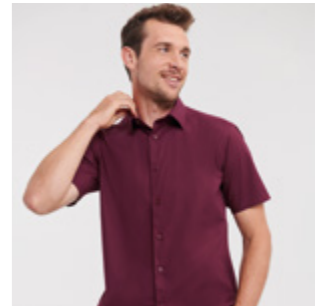


30 36 CQ PT



### 947M MEN'S SHORT SLEEVE FITTED STRETCH SHIRT FIT FITTED • SIZES S-4XL

- » Easy Care
- » Curved hem
- » Stiffened New Kent boned collar

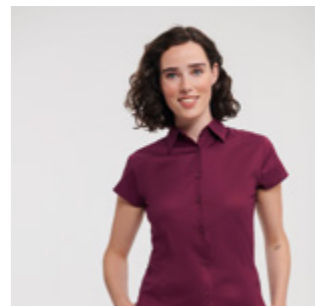


30 36 CQ PT



### 947F LADIES' SHORT SLEEVE FITTED STRETCH SHIRT FIT FITTED • SIZES XS-2XL

- » Easy Care
- » Curved hem
- » Darts on bust front hem and back panel for fitted shape
- » Stylish capped short sleeves



30 36 CQ PT





## OXFORD SHIRTS

Our Oxford range allows everyone to look their best while presenting a smart and consistent appearance.

### OXFORD SHIRT 922 • 923 • 932 • 933



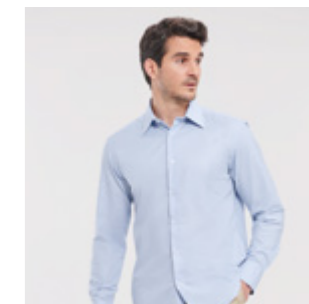
EC Easy Care

**MATERIAL / WEIGHT**  
70% Cotton, 30% Polyester Oxford  
White: 130g/m<sup>2</sup>, Colours: 135g/m<sup>2</sup>

**PACKING**  
Pack 1/ Carton 12

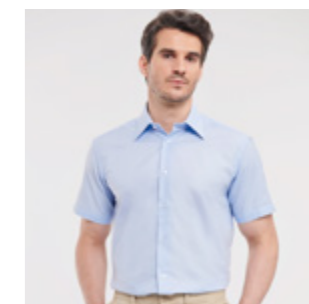
#### 922M MEN'S LONG SLEEVE TAILORED OXFORD SHIRT FIT TAILORED • SIZES S-4XL

- » Easy Care
- » Curved hem
- » Stiffened Kent boned collar
- » Rounded 2 button adjustable cuffs, with option for cuff links



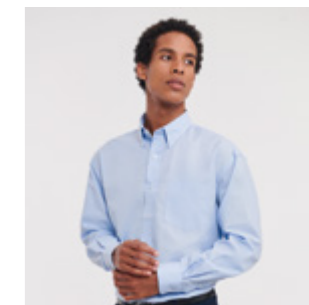
#### 923M MEN'S SHORT SLEEVE TAILORED OXFORD SHIRT FIT TAILORED • SIZES S-4XL

- » Easy Care
- » Curved hem
- » Stiffened Kent boned collar



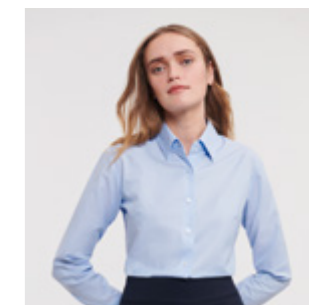
#### 932M MEN'S LONG SLEEVE CLASSIC OXFORD SHIRT FIT CLASSIC • SIZES S-6XL

- » Easy Care
- » Curved hem
- » Button down collar
- » Back yoke with 2 side pleats
- » Left chest pocket
- » Rounded 2 button adjustable cuffs



#### 932F LADIES' LONG SLEEVE TAILORED OXFORD SHIRT FIT TAILORED • SIZES XS-6XL

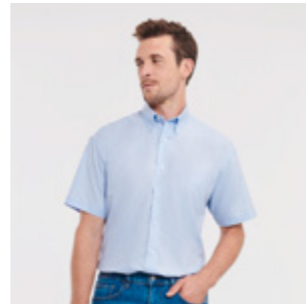
- » Easy Care
- » Curved hem
- » 2 button collar stand with classic shaped collar
- » Darts at bustline and back for tailored fit
- » Rounded 2 button adjustable cuffs





**933M MEN'S SHORT SLEEVE CLASSIC OXFORD SHIRT**  
FIT CLASSIC • SIZES S-6XL

- » Easy Care
- » Curved hem
- » Button down collar
- » Back yoke with 2 side pleats
- » Left chest pocket



**933F LADIES' SHORT SLEEVE TAILORED OXFORD SHIRT**  
FIT TAILORED • SIZES XS-6XL

- » Easy Care
- » Curved hem
- » 2 button collar stand with classic shaped collar
- » Darts at bustline and back for tailored fit



933M



933F

**WASHED OXFORD SHIRT**  
920



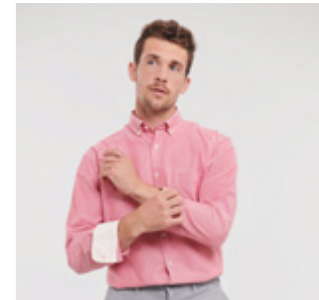
EC Easy Care

**MATERIAL / WEIGHT**  
100% Cotton Oxford  
130g/m<sup>2</sup>

**PACKING**  
Pack 1/ Carton 12

**920M MEN'S LONG SLEEVE TAILORED WASHED OXFORD SHIRT**  
FIT TAILORED • SIZES S-4XL

- » Easy Care
- » Button down collar
- » 100% combed ringspun cotton
- » Garment washed
- » Fashionable contrasts: cuffs (inside), collar (inside)
- » Contrast buttons
- » Left chest pocket
- » Removable fashionable loop for optional attachment of ties or glasses
- » Rounded 2 button adjustable cuffs
- » Curved hem



920M



920M



## HERRINGBONE SHIRTS

Our Herringbone shirt is versatile and hard-wearing, providing you with the ideal combination of style and durability.

## HERRINGBONE SHIRT

964 • 962 • 963



### MATERIAL / WEIGHT

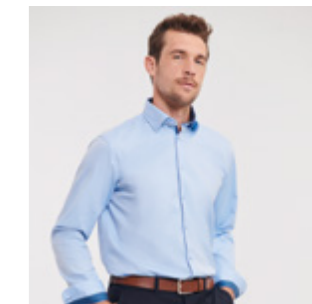
84% Cotton, 16% Polyester Herringbone  
White: 125g/m<sup>2</sup>, Colours: 130g/m<sup>2</sup>

### PACKING

Pack 1/ Carton 12

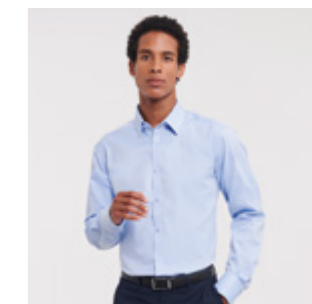
### 964M MEN'S LONG SLEEVE TAILORED CONTRAST HERRINGBONE SHIRT FIT TAILORED • SIZES S-4XL

- » Easy Care
- » Longer fit and Narrow placket
- » Curved hem
- » Under-Button-Down collar
- » Fashionable contrasts: cuffs (inside), collar (inside) with contrast piping
- » Contrasting colours at cuff buttonhole and lowest buttonhole
- » Darts at back improve fit



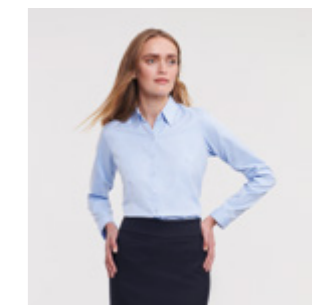
### 962M MEN'S LONG SLEEVE TAILORED HERRINGBONE SHIRT FIT TAILORED • SIZES S-4XL

- » Easy Care
- » Longer fit
- » Narrow placket
- » No show through
- » Curved hem
- » Stiffened Kent boned collar
- » Rounded 2 button adjustable cuffs, with option for cuff links



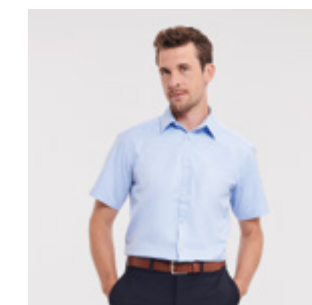
### 962F LADIES' LONG SLEEVE TAILORED HERRINGBONE SHIRT FIT TAILORED • SIZES XS-4XL

- » Easy Care
- » Longer fit
- » Narrow placket
- » No show through
- » Curved hem
- » Neat modern collar
- » Darts at chest, front and back hem
- » Stylish, narrow cuffs with single button fastening



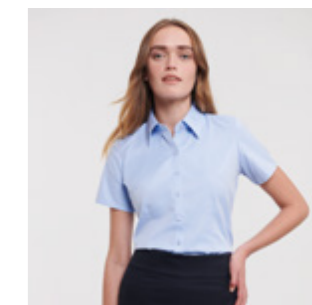
### 963M MEN'S SHORT SLEEVE TAILORED HERRINGBONE SHIRT FIT TAILORED • SIZES S-4XL

- » Easy Care
- » Longer fit
- » Narrow placket
- » No show through
- » Curved hem
- » Stiffened Kent boned collar



### 963F LADIES' SHORT SLEEVE TAILORED HERRINGBONE SHIRT FIT TAILORED • SIZES XS-4XL

- » Easy Care
- » Longer fit
- » Narrow placket
- » No show through
- » Curved hem
- » Neat modern collar
- » Darts at chest, front and back hem



# ULTIMATE NON-IRON SHIRT

956 • 957 • 958



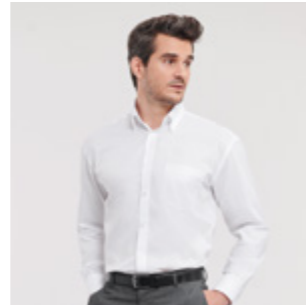
**MATERIAL / WEIGHT**  
100% Cotton Micro Twill  
120g/m<sup>2</sup>

**PACKING**  
Pack 1/ Carton 12

## 956M MEN'S LONG SLEEVE CLASSIC ULTIMATE NON-IRON SHIRT FIT CLASSIC • SIZES S-4XL

- » Easy Care
- » Non-iron
- » Curved hem
- » Button down collar
- » Back yoke with 2 side pleats
- » Left chest pocket

- » Contemporary size mitred cuffs, adjustable with two buttons and with option for cuff links



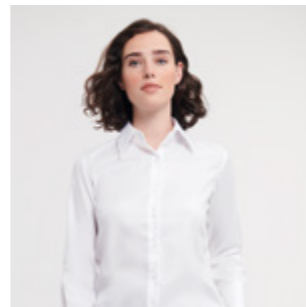
30 36 BZ



## 956F LADIES' LONG SLEEVE TAILORED ULTIMATE NON-IRON SHIRT FIT TAILORED • SIZES XS-4XL

- » Easy Care
- » Non-iron
- » Curved hem
- » Stylish and relaxed long edged collar
- » Twin button fastening

- » Cocktail cuffs with single button fastening with extended gauntlet and option for cuff links

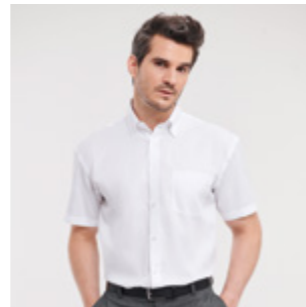


30 36 BZ



## 957M MEN'S SHORT SLEEVE CLASSIC ULTIMATE NON-IRON SHIRT FIT CLASSIC • SIZES S-4XL

- » Easy Care
- » Non-iron
- » Curved hem
- » Button down collar
- » Back yoke with 2 side pleats
- » Left chest pocket

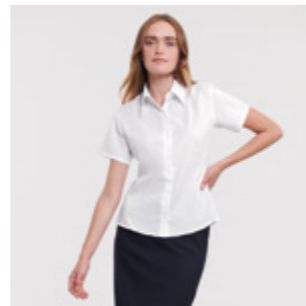


30 36 BZ



## 957F LADIES' SHORT SLEEVE TAILORED ULTIMATE NON-IRON SHIRT FIT TAILORED • SIZES XS-4XL

- » Easy Care
- » Non-iron
- » Curved hem
- » Stylish and relaxed long edged collar
- » Twin button fastening

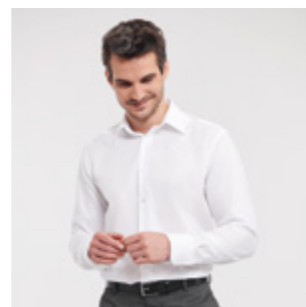


30 36 BZ



## 958M MEN'S LONG SLEEVE TAILORED ULTIMATE NON-IRON SHIRT FIT TAILORED • SIZES S-4XL

- » Easy Care
- » Non-iron
- » Curved hem
- » Stiffened Kent boned collar
- » Stylish, mitred cuffs, adjustable with two buttons and option for cuff links



30 36 BZ



922M • 932F



964M



957F

# KNITWEAR

|  
MODERN CLASSICS

Stylish layering is what our timeless and easy care knitwear was made for.

|



## V-NECK KNITTED PULLOVER

710



EC Easy Care

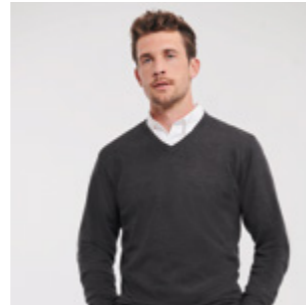
**MATERIAL / WEIGHT**  
50% Cotton, 50% Acrylic CottonBlend  
275g/m<sup>2</sup>

**PACKING**  
Pack 1/ Carton 12

### 710M MEN'S V-NECK KNITTED PULLOVER SIZES XXS-4XL

- » Classic Fit
- » Contemporary styling
- » Fully fashioned
- » Elastane on ribbed cuffs and waistband trim to retain shape and smart appearance
- » Quick to dry and Easy care

36 CM FN



### 710F LADIES' V-NECK KNITTED PULLOVER SIZES XXS-4XL

- » Classic Fit
- » Contemporary styling
- » Fully fashioned
- » Elastane on ribbed cuffs and waistband trim to retain shape and smart appearance
- » Quick to dry and Easy care

36 CM FN



## V-NECK KNITTED CARDIGAN

715



EC Easy Care

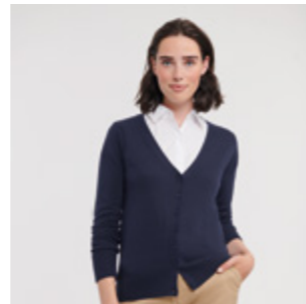
**MATERIAL / WEIGHT**  
50% Cotton, 50% Acrylic CottonBlend  
275g/m<sup>2</sup>

**PACKING**  
Pack 1/ Carton 12

### 715F LADIES' V-NECK KNITTED CARDIGAN SIZES XXS-4XL

- » Classic Fit
- » Contemporary styling
- » Fully fashioned
- » Elastane on ribbed cuffs and waistband trim to retain shape and smart appearance
- » Quick to dry and Easy care
- » Dyed-to-match buttons

36 CM FN



## V-NECK SLEEVELESS KNITTED PULLOVER

716



EC Easy Care

**MATERIAL / WEIGHT**  
50% Cotton, 50% Acrylic CottonBlend  
275g/m<sup>2</sup>

**PACKING**  
Pack 1/ Carton 12

### 716M V-NECK SLEEVELESS KNITTED PULLOVER SIZES XXS-4XL

- » Classic Fit
- » Contemporary styling
- » Fully fashioned
- » Elastane on ribbed cuffs and waistband trim to retain shape and smart appearance
- » Refined button up fastening with inside facing and dyed-to-match buttons
- » Quick to dry and Easy care

36 CM FN



710M



710F



716M



THE LIGHT LAYER

For extra warmth in winter, crisp spring days, chilli summer evenings or misty autumn days. Fleece is a team mate with you all year long.



OUTDOOR FLEECE

872 • 870 • 874



MATERIAL / WEIGHT  
100% Polyester Anti-Pill Fleece  
320g/m<sup>2</sup>

PACKING  
Pack 3/ Carton 24

872M MEN'S OUTDOOR FLEECE GILET  
SIZES XS-2XL

- » Cadet collar
- » Side pockets with inside-out zips and inner mesh lining
- » Cord pulls on all zips
- » Side panel construction for modern fit
- » Bungee cord in hem



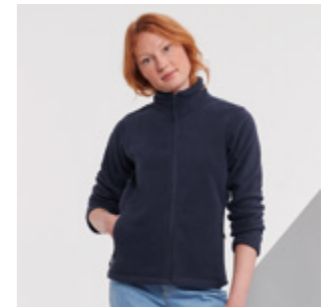
870M MEN'S FULL ZIP OUTDOOR FLEECE  
SIZES XS-4XL

- » Cadet collar
- » Side pockets with inside-out zips and inner mesh lining
- » Cord pulls on all zips
- » Side panel construction for modern fit
- » Bungee cord in hem



870F LADIES' FULL ZIP OUTDOOR FLEECE  
SIZES XS-2XL

- » Cadet collar
- » Side pockets with inside-out zips and inner mesh lining
- » Cord pulls on all zips
- » Side panel construction for modern fit
- » Bungee cord in hem



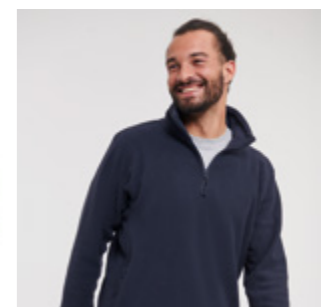
870B CHILDREN'S FULL ZIP OUTDOOR FLEECE  
SIZES 3-12 YEARS

- » Cadet collar
- » Side pockets with inside-out zips and inner mesh lining
- » Cord pulls on all zips
- » Side panel construction for modern fit
- » No drawcord in line with health and safety legislation



874M QUARTER ZIP OUTDOOR FLEECE  
SIZES XS-2XL

- » Cadet collar
- » Side pockets with inside-out zips and inner mesh lining
- » Cord pulls on all zips
- » Side panel construction for modern fit
- » Bungee cord in hem



# INSULATED JACKETS

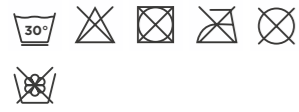
## THE STRONG PLAYER

Insulated Jackets boast a modern design and environmentally friendly features, such as the sustainable Dupont™ Sorona® padding.



## CROSS JACKET

430



Breathable  
up to 2000g/m<sup>2</sup> per 24 hours

Windproof

**MATERIAL / WEIGHT**  
100% Polyester  
125g/m<sup>2</sup>

**PACKING**  
Pack 1/ Carton 12

### 430M MEN'S CROSS JACKET SIZES S-4XL

- » Contemporary shaped fit
- » High performance DWR fabric treated with Aquapel™ by Nanotex®
- » Fluorine and PFC free
- » Eco-efficient padding by Dupont™ Sorona®

- » Stand up collar with 2 snap fastener and inner storm flap to ward off wind and draught
- » Zipped inside pocket
- » Decorative sleeve flap with snap fastener
- » Discreet decoration access at inner left chest



36 FN

### 430F LADIES' CROSS JACKET SIZES XS-3XL

- » Contemporary shaped fit
- » High performance DWR fabric treated with Aquapel™ by Nanotex®
- » Fluorine and PFC free
- » Eco-efficient padding by Dupont™ Sorona®

- » Stand up collar with 2 snap fastener and inner storm flap to ward off wind and draught
- » Zipped inside pocket
- » Decorative sleeve flap with snap fastener
- » Discreet decoration access at inner left chest



36 FN



## SUSTAINABLE SOURCING

Sorona® is 37% plant based.

430F

## HOODED NANO JACKET & BODYWARMER

440 • 441



Breathable  
up to 2000g/m<sup>2</sup> per 24 hours

Windproof

**MATERIAL / WEIGHT**  
100% Polyester  
66g/m<sup>2</sup>

**PACKING**  
Pack 1/ Carton 12

### 440M MEN'S HOODED NANO JACKET SIZES S-4XL

- » High performance DWR fabric treated with Aquapel™ by Nanotex®
- » Fluorine and PFC free
- » Eco-efficient padding by Dupont™ Sorona®
- » Contrasting zips, lining and accents for a refined look

- » Discreet decoration access at inner left chest
- » Stretch binding at sleeves and hem
- » Adjustable 3-parted removable hood



36 IR DO FN

### 440F LADIES' HOODED NANO JACKET SIZES XS-3XL

- » High performance DWR fabric treated with Aquapel™ by Nanotex®
- » Fluorine and PFC free
- » Eco-efficient padding by Dupont™ Sorona®
- » Contrasting zips, lining and accents for a refined look

- » Discreet decoration access at inner left chest
- » Stretch binding at sleeves and hem
- » Adjustable 3-parted removable hood

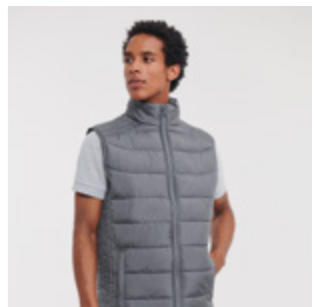


36 IR DO FN

### 441M MEN'S NANO BODYWARMER SIZES S-4XL

- » High performance DWR fabric treated with Aquapel™ by Nanotex®
- » Fluorine and PFC free
- » Eco-efficient padding by Dupont™ Sorona®
- » Contrasting zips, lining and accents for a refined look

- » Discreet decoration access at inner left chest
- » Adjustable hem with bungee cord

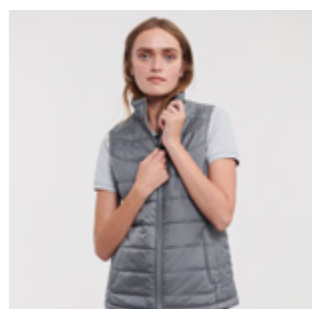


36 IR DO FN

### 441F LADIES' NANO BODYWARMER SIZES XS-3XL

- » High performance DWR fabric treated with Aquapel™ by Nanotex®
- » Fluorine and PFC free
- » Eco-efficient padding by Dupont™ Sorona®
- » Contrasting zips, lining and accents for a refined look

- » Discreet decoration access at inner left chest
- » Adjustable hem with bungee cord



36 IR DO FN



# S O F T S H E L L J A C K E T

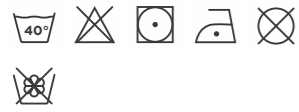
## A RELIABLE TEAM MATE

Smart, functional details for travelling and workwear needs, combined with modern fabric technology and contemporary fits.



## BIONIC SOFTSHELL JACKET

410



Breathable  
up to 5000g/m<sup>2</sup> per 24 hours

Windproof

Waterproof material  
up to 5000mm

**MATERIAL / WEIGHT**  
94% Polyester, 6% Elastane treated with Bionic-Finish® Eco (3 layer softshell jacket)  
320g/m<sup>2</sup>

**PACKING**  
Pack 1/ Carton 12

### 410M MEN'S BIONIC SOFTSHELL JACKET SIZES XS-4XL

- » High performance DWR fabric with hydrophobic membrane
- » Treated with Bionic-Finish® Eco
- » Fluorine and PFC free
- » Contrasting zips and accents for a refined look
- » High moisture vapour transfer with hydroshell air panels at armpits for enhanced movement and breathability



### 410F LADIES' BIONIC SOFTSHELL JACKET SIZES XS-4XL

- » High performance DWR fabric with hydrophobic membrane
- » Treated with Bionic-Finish® Eco
- » Fluorine and PFC free
- » Contrasting zips and accents for a refined look
- » High moisture vapour transfer with hydroshell air panels at armpits for enhanced movement and breathability



410M



410F

## SOFTSHELL JACKET & GILET

140 • 141



Breathable  
up to 5000g/m<sup>2</sup> per 24 hours

Windproof

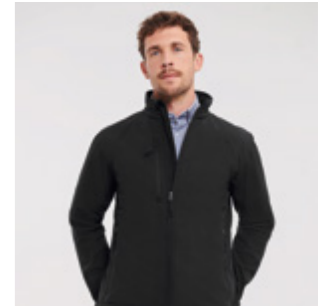
Waterproof material  
up to 5000mm

**MATERIAL / WEIGHT**  
92% Polyester, 8% Elastane (3 layer Softshell fabric)  
340g/m<sup>2</sup>

**PACKING**  
Pack 1/ Carton 12

### 140M MEN'S SOFTSHELL JACKET SIZES XS-4XL

- » Three layers softshell material
- » Side pockets and chest pocket with inner lining, inside-out zippers and cord pulls
- » Full zip with inner storm flap and zip neck protector at collar
- » Drop tail
- » Bungee cord in hem
- » Adjustable cuffs

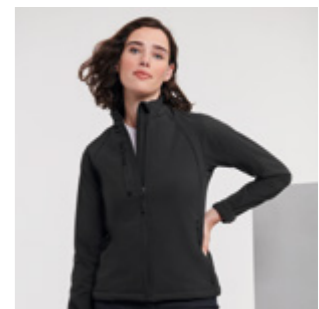


3XL & 4XL only available in Black, Classic Red, French Navy, Titanium, Bottle Green



### 140F LADIES' SOFTSHELL JACKET SIZES XS-4XL

- » Three layers softshell material
- » Side pockets and chest pocket with inner lining, inside-out zippers and cord pulls
- » Full zip with inner storm flap and zip neck protector at collar
- » Drop tail
- » Bungee cord in hem
- » Adjustable cuffs
- » Feminine Fit

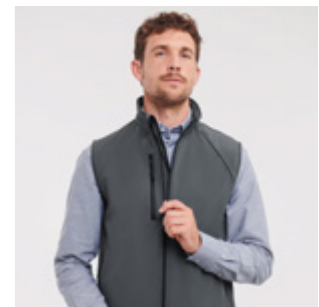


3XL & 4XL only available in Black, Classic Red, French Navy, Titanium, Bottle Green



### 141M MEN'S SOFTSHELL GILET SIZES XS-2XL

- » Three layers softshell material
- » Side pockets and chest pocket with inner lining, inside-out zippers and cord pulls
- » Full zip with inner storm flap and zip neck protector at collar
- » Drop tail
- » Bungee cord in hem
- » Adjustable cuffs



### 141F LADIES' SOFTSHELL GILET SIZES XS-2XL

- » Three layers softshell material
- » Side pockets and chest pocket with inner lining, inside-out zippers and cord pulls
- » Full zip with inner storm flap and zip neck protector at collar
- » Drop tail
- » Bungee cord in hem
- » Adjustable cuffs
- » Feminine Fit



**NEW!**



The Essential Softshell Jacket is a 2-layer softshell jacket with great environmentally conscious features!

The outer face material is made from 94% recycled polyester and 6% elastane, and the fleece lining is 100% recycled polyester. The jacket is treated with a fluorine and PFC-free finish from the Bionic-Finish-Eco® brand.

## ESSENTIAL SOFTSHELL JACKET

420



**MATERIAL / WEIGHT**  
94% Polyester (recycled), 6% Elastane  
290 g/m<sup>2</sup>

**PACKING**  
Pack 1/ Carton 12

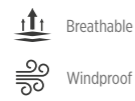
### 420M ESSENTIAL SOFTSHELL JACKET SIZES XS-3XL

- » Classic Fit
- » Bonded 2-layer softshell material with water-repellent Bionic Eco Finish® treatment (fluorine and PFC-free)
- » Outer face material and inner fleece lining made from recycled polyester
- » Cadet collar
- » Storm flap
- » Side pockets



## SMART SOFTSHELL JACKET & GILET

040 • 041



### MATERIAL / WEIGHT

100% Polyester Knitted Softshell Outer Layer,  
Bonded Microfleece Inner Layer  
315g/m<sup>2</sup>

### PACKING

Pack 1/ Carton 12



### 040M MEN'S SMART SOFTSHELL JACKET SIZES XS-3XL

- » Durable Water Repellent Du Pont™ Teflon® Coating
- » Two layer softshell material without membrane
- » 2 zipped pockets
- » Inside-out zippers
- » Cadet collar

- » Drop tail
- » Protection against wind and chill
- » Higher degree of breathability
- » Microfleece lining
- » Back neck tape
- » Bound inside seams on zip
- » Headphone access



### 040F LADIES' SMART SOFTSHELL JACKET SIZES XS-3XL

- » Durable Water Repellent Du Pont™ Teflon® Coating
- » Two layer softshell material without membrane
- » 2 zipped pockets
- » Inside-out zippers
- » Cadet collar

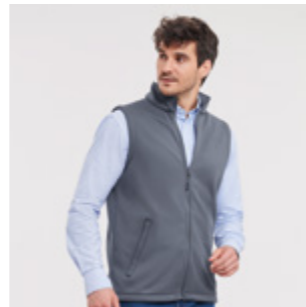
- » Drop tail
- » Protection against wind and chill
- » Higher degree of breathability
- » Microfleece lining
- » Back neck tape
- » Bound inside seams on zip
- » Headphone access



### 041M MEN'S SMART SOFTSHELL GILET SIZES XS-3XL

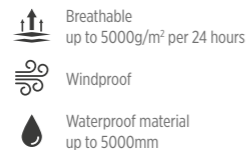
- » Durable Water Repellent Du Pont™ Teflon® Coating
- » Two layer softshell material without membrane
- » 2 zipped pockets
- » Inside-out zippers
- » Cadet collar

- » Drop tail
- » Protection against wind and chill
- » Higher degree of breathability
- » Microfleece lining
- » Back neck tape
- » Bound inside seams on zip
- » Headphone access



## SPORTSHELL 5000 JACKET

520



### MATERIAL / WEIGHT

100% polyester outer, 100% polyester mesh,  
Advanced Softshell Fabric with Natural Stretch  
(3 layer bonded hydrophobic substrate)  
250g/m<sup>2</sup>

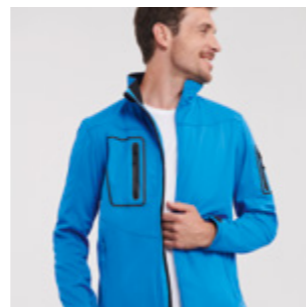
### PACKING

Pack 1/ Carton 12

### 520M MEN'S SPORTSHELL 5000 JACKET SIZES XS-2XL

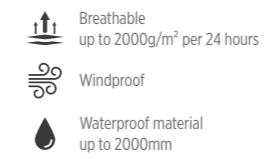
- » Designed for active living: laser cut pockets with matt waterproof zips on sleeve and chest
- » Adjustable cuffs for comfort and maintenance of personal microclimate; YKK centre zipper

- » Ergonomic shape - body fit creates microclimate for maximum thermoregulation and moisture transfer
- » Discreet decoration access at inner left chest



## HYDRAPLUS 2000 JACKET

510



### MATERIAL / WEIGHT

100% Nylon Taslan  
190g/m<sup>2</sup>

### PACKING

Pack 1/ Carton 12

### 510M MEN'S HYDRAPLUS 2000 JACKET SIZES XS-4XL

- » Active fit with articulated elbows and raglan sleeves
- » Inside-out YKK front zipper with cord pull; double storm flap with additional hook and loop fastener closure

- » Stowaway 3 piece hood and microfleece inner collar
- » Fully lined, with discreet concealed decoration access at hem, bungee cord in hem



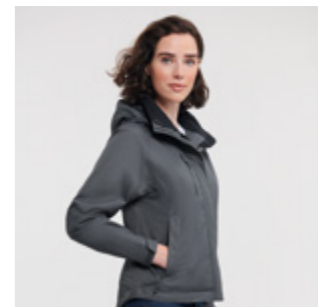
3XL & 4XL only available in Black, Classic Red, French Navy and Titanium



### 510F LADIES' HYDRAPLUS 2000 JACKET SIZES XS-4XL

- » Active fit with articulated elbows and raglan sleeves
- » Inside-out YKK front zipper with cord pull; double storm flap with additional hook and loop fastener closure

- » Stowaway 3 piece hood and microfleece inner collar
- » Fully lined, with discreet concealed decoration access at hem, bungee cord in hem



3XL & 4XL only available in Black, Classic Red, French Navy and Titanium



510F



041M

# WORKWEAR



—  
YOUR TRUSTED WORKMATE

Made for extra durability and practicality, Russell Workwear is a valuable tool for any hands-on team!

—



## HEAVY DUTY WORKWEAR T

010



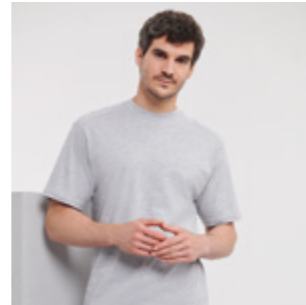
**MATERIAL / WEIGHT**  
100% Combed Ringspun Cotton  
Light Oxford: 93% Cotton, 7% Viscose  
180g/m<sup>2</sup>

**PACKING**  
Pack 3/ Carton 36

### 010M HEAVY DUTY WORKWEAR T SIZES XS-4XL

- » Classic Fit
- » Single Jersey
- » Double layered shoulder panels and reinforced twin needle stitching at armhole
- » 1x1 rib knit collar with top stitch

- » Double layer yoke, perfect for decoration
- » Enzyme washed ringspun cotton for a softer feel and added comfort



## HEAVY DUTY COLLAR & CREW NECK WORKWEAR SWEATSHIRTS

012 • 013



**MATERIAL / WEIGHT**  
80% Combed Ringspun Cotton, 20% Polyester  
300g/m<sup>2</sup>

**PACKING**  
Pack 3/ Carton 24

### 012M HEAVY DUTY WORKWEAR COLLAR SWEATSHIRT SIZES XS-4XL

- » SpotShield™ stain resistant coating
- » Double layered shoulder panels for superior comfort and stability
- » Locker patch for personalisation
- » Elasticated pen holder on top sleeve
- » Plastic-coated metal buttons

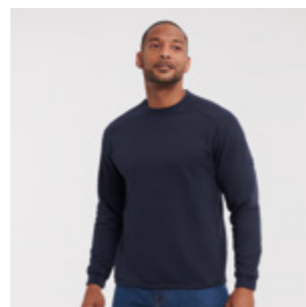
- » Drop tail and compact 1x1 ribbed hem for perfect bottom fit and protection against wind and chill
- » Side darts for better fit and flexibility



### 013M HEAVY DUTY WORKWEAR SWEATSHIRT SIZES XS-4XL

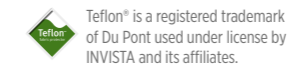
- » SpotShield™ stain resistant coating
- » Double layered shoulder panels for superior comfort and stability
- » Locker patch for personalisation
- » Elasticated pen holder on top sleeve

- » Drop tail and compact 1x1 ribbed hem for perfect bottom fit and protection against wind and chill
- » Side darts for better fit and flexibility



## WORKWEAR POLYCOTTON TWILL TROUSERS & SHORTS

001 • 002



Teflon® is a registered trademark of Du Pont used under license by INVISTA and its affiliates.

**MATERIAL / WEIGHT**  
65% Polyester, 35% Cotton Twill  
245g/m<sup>2</sup>

**PACKING**  
Pack 1/ Carton 12

### 001M WORKWEAR POLYCOTTON TWILL TROUSERS

- » 2 back pockets with flaps
- » Cargo pocket on right leg
- » Small extra pocket below waistband
- » Expandable waistband for comfortable fit

**SIZES**  
**WAIST SIZES**  
UK (inches): 28/30/32/34/36/38/40/42/44/46/48  
Europe: 44/46/48/50/52/54/56/58/60/62/64  
**LEG LENGTH**  
Ins R32/L:34,  
cm R81/L:86



### 002M WORKWEAR POLYCOTTON TWILL SHORTS

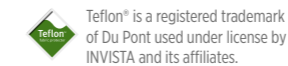
- » 2 back pockets with flaps
- » Cargo pocket on right leg
- » Small extra pocket below waistband
- » Expandable waistband for comfortable fit

**SIZES**  
**WAIST SIZES**  
UK (inches): 28/30/32/34/36/38/40/42/44/46/48  
Europe: 44/46/48/50/52/54/56/58/60/62/64



## HEAVY DUTY WORKWEAR TROUSERS

015



Teflon® is a registered trademark of Du Pont used under license by INVISTA and its affiliates.

**MATERIAL / WEIGHT**  
65% Polyester, 35% Cotton Hardwearing Canvas  
260g/m<sup>2</sup>

**PACKING**  
Pack 1/ Carton 12

### 015M HEAVY DUTY WORKWEAR TROUSERS

- » Teflon® fabric protector
- » 2 back pockets, one open, one with flap and hook and loop fastener
- » Cargo pockets on both legs, with practical compartments on right leg

- » Small extra pocket below waistband
- » Triple stitched inner leg seams and pocket openings triple, reinforced seat area
- » Internal pockets for knee pads (21cm x 15cm max.)
- » YKK zipper




**SIZES**  
**WAIST SIZES**  
UK (inches): 28/30/32/34/36/38/40/42/44/46/48  
Europe: 44/46/48/50/52/54/56/58/60/62/64

**LEG LENGTH**  
Ins S:30/R32/L:34  
cm S:76/R81/L:86

# HEAVY DUTY WORKWEAR GILET

014



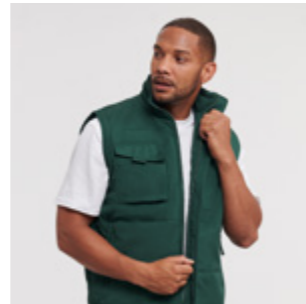
 Teflon® is a registered trademark of Du Pont used under license by INVISTA and its affiliates.

**MATERIAL / WEIGHT**  
65% Polyester, 35% Cotton Hardwearing Canvas with 5oz Polyester Wadding, 100% Polyester Inner Lining  
260g/m²

**PACKING**  
Pack 1/ Carton 12

## 014M HEAVY DUTY WORKWEAR GILET SIZES XS-4XL

- » Teflon® fabric protector
- » Full zip with stormflap, flexi notch at neck
- » Drop Tail, elasticated gusset at armhole, reinforced hang tag
- » Right hand side chest pocket with functional multi compartments
- » Spacious, discreet zipped decoration access at left chest



36 CG FN 38



013M



012M • 013M • 014M

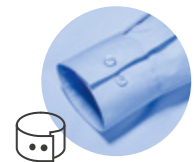
# CUFF STYLES & COLLARS



**ROUNDED EDGE CUFFS**  
Adjustable with 2 buttons.



**KENT**  
Perfect for business, this classic collar is named after the Duke of Kent.



**SQUARE EDGE CUFFS**  
Adjustable with 2 buttons.



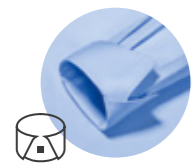
**NEW KENT**  
Not as wide-flared as the Cutaway or as sharp-cut as the Kent collar, this modern style is stiffened, boned and suitable for embroidery.



**MITRED EDGE CUFFS**  
Adjustable with 2 buttons.



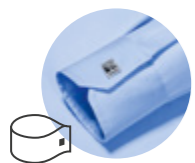
**BUTTON DOWN**  
The modern sporty buttoned-down collar gives a smart appearance without a tie.



**COCKTAIL CUFFS**  
These can be worn either turned or not turned, for a stylish look.



**UNDER BUTTON DOWN**  
This type of collar is ideal for wearing without a tie and with an open collar button.



**CUFF LINKS**  
Many shirts offer the option to wear cuff links.



**LADIES**  
Our Ladies' Shirts feature a classic collar distinguished in style by its length and shape.

# CARE SYMBOLS

|                                |                               |                                |                         |                                |                   |                   |   |
|--------------------------------|-------------------------------|--------------------------------|-------------------------|--------------------------------|-------------------|-------------------|---|
|                                |                               |                                |                         |                                |                   |                   |   |
| 30°C machine wash gentle cycle | 30°C machine wash             | 40°C machine wash gentle cycle | 40°C machine wash       | 50°C machine wash gentle cycle | 50°C machine wash | 60°C machine wash | No softeners                                    |
|                                |                               |                                |                         |                                |                   |                   |   |
| Do not tumble dry              | Tumble dry at low temperature | Do not iron                    | Iron at low temperature | Iron at medium temperature     | Do not bleach     | Do not dry clean  | Dry clean, any solvent except trichloroethylene |

# FEATURES & FUNCTIONS



**BREATHABLE**  
A material's breathability is measured in terms of how many grams of water vapour pass through a square meter of fabric over 24 hours (g/m<sup>2</sup>/24h). The higher the value, the more breathable the product.



**WATERPROOF**  
The water column test indicates how many millimetres of water a fabric can withstand before the pressure causes it to leak. Measurements above 1,500 mm are considered waterproof.



**EASY CARE**  
A special finish ensures that the shirts and blouses are easier and quicker to iron.



**SPOT SHIELD™**  
Fabrics with a SpotShield™ finish are resistant to water and dirt. They even repel most oils without difficulty.



**BIONIC-FINISH® ECO**  
The fluorine- and PFC-free finish prevents water and dirt from sticking to the material.



**TEFLON® (DUPONT™)**  
Teflon® coatings ensure that fabrics are resistant to water, oil and dirt. What's more, this does not have any negative impact on the weight, look, colour or breathability.



**LYCRA®**  
Lycra® is a brand name from the company Invista. It is an extremely stretchy elastane fibre with outstanding rebound properties. These textiles promise an improved fit and comfort to match.



**LYCRA® T400®**  
This elastomultiester (LYCRA® T400®) is a modern double fibre material that can be stretched in all directions and then bounces back to its original shape. The high-quality material adapts to the movements of the wearer and always retains its shape.



**AQUAPEL™ BY NANOTEX®**  
Developed in order to offer reliable protection against wind and water, Aquapel™ is still breathable and at the same time features environmentally friendly fluorine- and PFC-free technology.



**DUPONT™ SORONA®**  
The sustainable insulation with renewable plant-based materials is made with reduced energy consumption and 50% less greenhouse gas emissions.



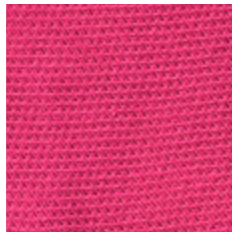
**FLUOR- AND PFC-FREE**  
Fluorine- and PFC-free materials are more degradable, for the good of both us and the environment.





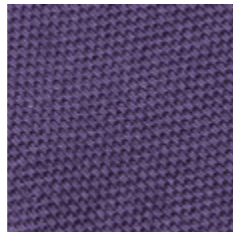
**PR POWDER ROSE**

PANTONE® FABRIC: 13-1504 TPX  
PANTONE® PAPER: 5035 C  
C:11 M:26 Y:19 K:0



**57 FUCHSIA**

PANTONE® FABRIC: 18-1856 TPX  
PANTONE® PAPER: 1935 C  
C:0 M:100 Y:7 K:0



**81 PURPLE**

PANTONE® FABRIC: 19-3737 TPX  
PANTONE® PAPER: 7447 C  
C:90 M:100 Y:30 K:15



**PT PORT**

PANTONE® FABRIC: 19-1726 TPX  
PANTONE® PAPER: 7428 C  
C:10 M:95 Y:43 K:73



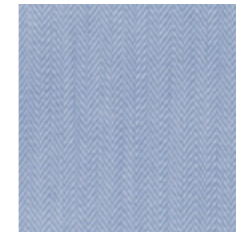
**41 BURGUNDY**

PANTONE® FABRIC: 19-1716 TPX  
PANTONE® PAPER: 5195 C  
C:50 M:100 Y:70 K:45



**BZ BRIGHT SKY**

PANTONE® FABRIC: 14-4112 TPX  
PANTONE® PAPER: 2708 C  
C:15 M:5 Y:0 K:0



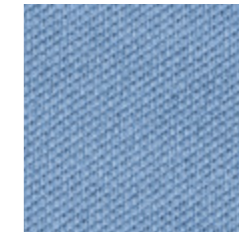
**42 LIGHT BLUE**

PANTONE® FABRIC: 14-4110 TPX  
PANTONE® PAPER: 2708 C  
C:30 M:14 Y:0 K:0



**OD OXFORD BLUE**

PANTONE® FABRIC: 14-4214 TPX  
PANTONE® PAPER: 644 C  
C:35 M:17 Y:0 K:0



**SC SKY**

PANTONE® FABRIC: 15-4020 TPX  
PANTONE® PAPER: 651 C  
C:48 M:22 Y:0 K:0



**MK MINERAL BLUE**

PANTONE® FABRIC: 17-4021 TPX  
PANTONE® PAPER: 535 C  
C:47 M:28 Y:11 K:4



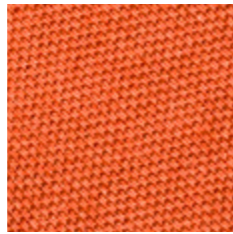
**CR CLASSIC RED**

PANTONE® FABRIC: 19-1764 TPX  
PANTONE® PAPER: 1945 C  
C:0 M:100 Y:80 K:25



**BR BRIGHT RED**

PANTONE® FABRIC: 18-1662 TPX  
PANTONE® PAPER: 1797 C  
C:0 M:100 Y:100 K:0



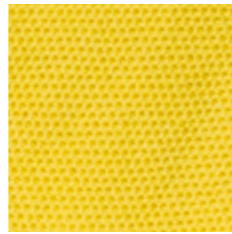
**44 ORANGE**

PANTONE® FABRIC: 17-1464 TPX  
PANTONE® PAPER: 1665 C  
C:0 M:77 Y:100 K:0



**PD PURE GOLD**

PANTONE® FABRIC: 14-1064 TPX  
PANTONE® PAPER: 137 C  
C:0 M:29 Y:92 K:0



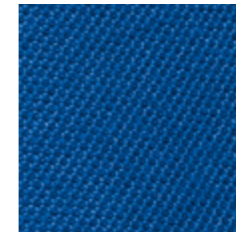
**K2 YELLOW**

PANTONE® FABRIC: 13-0746 TPX  
PANTONE® PAPER: 129 C  
C:0 M:0 Y:80 K:0



**CP CORPORATE BLUE**

PANTONE® FABRIC: 16-4021 TPX  
PANTONE® PAPER: 652 C  
C:60 M:35 Y:0 K:5



**ZU AZURE BLUE**

PANTONE® FABRIC: 18-4141 TPX  
PANTONE® PAPER: 660 C  
C:100 M:53 Y:0 K:3



**BH BRIGHT ROYAL**

PANTONE® FABRIC: 18-3949 TPX  
PANTONE® PAPER: 2726 C  
C:100 M:70 Y:0 K:5



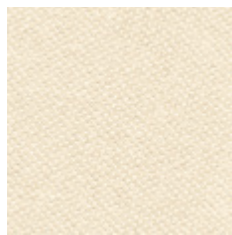
**IB INDIGO BLUE**

PANTONE® FABRIC: 19-4026 TPX  
PANTONE® PAPER: 2378 C  
C:86 M:56 Y:13 K:35



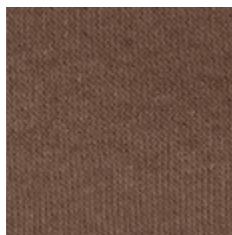
**PB PETROL BLUE**

PANTONE® FABRIC: 19-4324 TPX  
PANTONE® PAPER: 4160 C  
C:100 M:25 Y:0 K:62



**60 NATURAL**

PANTONE® FABRIC: 11-0606-TCX  
PANTONE® PAPER: 9224 C  
C:4 M:9 Y:25 K:0



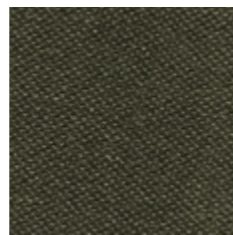
**MJ MOCHA**

PANTONE® FABRIC: 18-1017 TPX  
PANTONE® PAPER: 4272 C  
C:40 M:47 Y:59 K:37



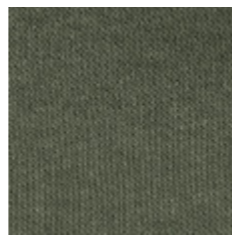
**CQ CHOCOLATE**

PANTONE® FABRIC: 17-0812 TPX  
PANTONE® PAPER: 439 C  
C:0 M:11 Y:17 K:75



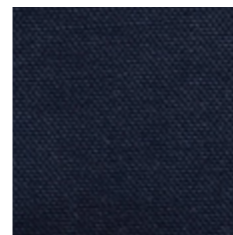
**DO DARK OLIVE**

PANTONE® FABRIC: 19-0511 TCX  
PANTONE® PAPER: 418 C  
C:61 M:51 Y:64 K:32



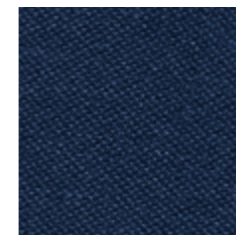
**BP OLIVE**

PANTONE® FABRIC: 19-0309 TPX  
PANTONE® PAPER: 418 C  
C:65 M:41 Y:60 K:48



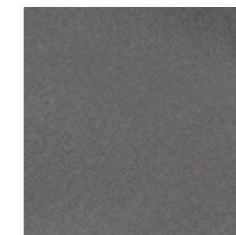
**NB BRIGHT NAVY**

PANTONE® FABRIC: 19-3921 TPX  
PANTONE® PAPER: 2380 C  
C:91 M:71 Y:36 K:56



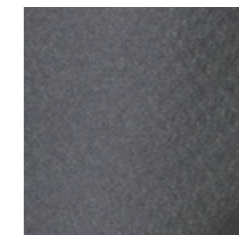
**FN FRENCH NAVY**

PANTONE® FABRIC: 19-4010 TPX  
PANTONE® PAPER: 532 C  
C:100 M:85 Y:35 K:55



**TT TITANIUM**

PANTONE® FABRIC: 19-3906 TPX  
PANTONE® PAPER: COOL GREY 11 C  
C:35 M:5 Y:0 K:85



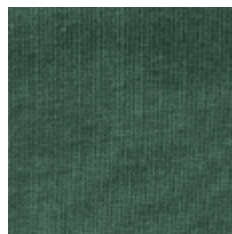
**IR IRON GREY**

PANTONE® FABRIC: 18-4214 TPX  
PANTONE® PAPER: 431 C  
C:45 M:25 Y:16 K:59



**CG CONVOY GREY**

PANTONE® FABRIC: 17-4405 TPX  
PANTONE® PAPER: 444 C  
C:38 M:5 Y:0 K:71



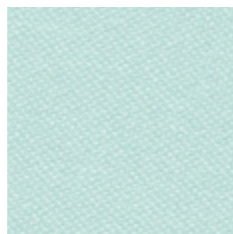
**38 BOTTLE GREEN**

PANTONE® FABRIC: 19-5513 TPX  
PANTONE® PAPER: 5477 C  
C:100 M:50 Y:80 K:45



**WL WINTER EMERALD**

PANTONE® FABRIC: 17-5034 TPX  
PANTONE® PAPER: 569 C  
C:100 M:0 Y:50 K:10



**AQ AQUA**

PANTONE® FABRIC: 14-4809-TCX  
PANTONE® PAPER: P 124-11C  
C:38 M:0 Y:16 K:5



**CM CHARCOAL MARL**

PANTONE® FABRIC: 19-4023 TPX  
PANTONE® PAPER: 432 C  
C:65 M:43 Y:26 K:78



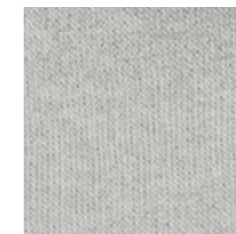
**SI SILVER**

PANTONE® FABRIC: 17-0000 TPX  
PANTONE® PAPER: 877 C  
C:0 M:0 Y:0 K:60



**BK STONE**

PANTONE® FABRIC: 15-4101 TPX  
PANTONE® PAPER: 421 C  
C:13 M:8 Y:11 K:26



**UG URBAN GREY**

PANTONE® FABRIC: 13-4303 TPX  
PANTONE® PAPER: COOL GREY 2 C  
C:22 M:15 Y:16 K:0



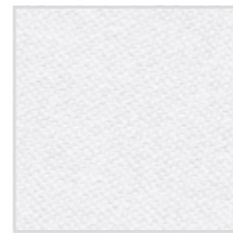
**SH SPORT HEATHER**

PANTONE® FABRIC: 18-4005 (MARLED)  
PANTONE® PAPER: 424 C  
C:2 M:2 Y:0 K:56



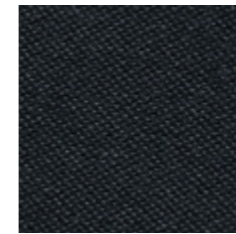
**LX LIGHT OXFORD**

PANTONE® FABRIC: 14-4002 (MARLED)  
PANTONE® PAPER: COOL GREY 3C  
C:5 M:0 Y:0 K:40



**30 WHITE**

PANTONE® FABRIC: 11-0601 TPX  
PANTONE® PAPER: 7541 C  
C:0 M:0 Y:0 K:0



**36 BLACK**

PANTONE® FABRIC: 19-4005 TPX  
PANTONE® PAPER: BLACK C  
C:100 M:50 Y:50 K:100



Member of amfori, the leading global business association for open and sustainable trade. We participate in amfori BSCI. For more information visit [www.amfori.org](http://www.amfori.org)



# SIZE GUIDE

All of our measurements are based on actual "to fit" body sizes rather than the size of the garment itself.

For example, a polo shirt with a chest to fit size of 92-97cm / 36-38" will fit someone with this chest measurement; trousers with a waist to fit 50 Europe / 34", will fit a person with this measurement.

## HERE ARE SOME TIPS TO HELP YOU CHOOSE THE MOST APPROPRIATE GARMENT SIZE(S):

1

### CHEST

**Men:** Measure around the fullest part of the chest, 2.5cm below the underarm.  
**Women:** Measure around the fullest part of the bust.

2

### COLLAR

**Men:** Measure around the base of the neck.

3

### WAIST

**All:** Measure around the natural waist, keeping the measuring tape taut.

4

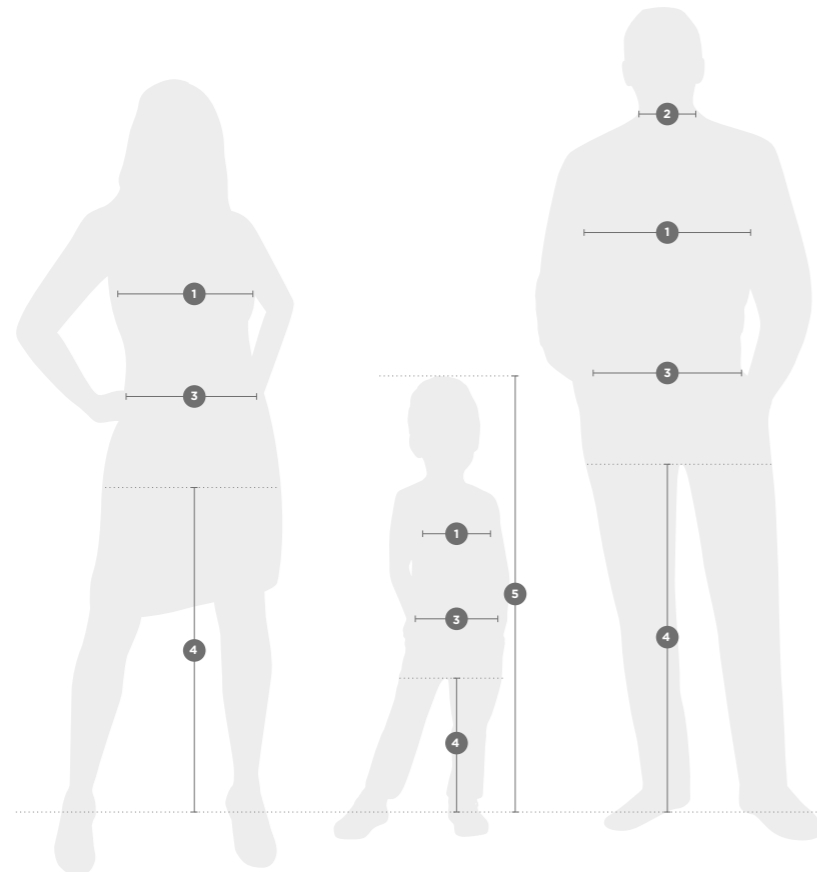
### HEIGHT

**Children:** Standing still with feet together and flat on the floor, measure from the top of the head to the ground.

5

### LEG LENGTH

**All:** Measure from the top of the inside leg at the crotch down to where the trousers are normally worn with shoes.



## ALL PRODUCTS (excluding shirts, trousers, shorts & sweat pants)

| LADIES'            | XXS   | XS    | S     | M     | L     | XL     | 2XL     | 3XL     | 4XL     | 5XL     | 6XL     |
|--------------------|-------|-------|-------|-------|-------|--------|---------|---------|---------|---------|---------|
| DRESS SIZE         |       |       |       |       |       |        |         |         |         |         |         |
| UK                 | 6     | 8     | 10    | 12    | 14    | 16     | 18      | 20      | 22      | 24      | 26      |
| FRANCE             | 34    | 36    | 38    | 40    | 42    | 44     | 46      | 48      | 50      | 52      | 54      |
| ITALY              | 38    | 40    | 42    | 44    | 46    | 48     | 50      | 52      | 54      | 56      | 58      |
| GERMANY/EUROPE     | 32    | 34    | 36    | 38    | 40    | 42     | 44      | 46      | 48      | 50      | 52      |
| CHEST TO FIT (CM)  | 72-77 | 77-82 | 82-87 | 87-92 | 92-97 | 97-102 | 102-107 | 107-112 | 112-117 | 117-122 | 122-127 |
| CHEST TO FIT (INS) | 28-30 | 30-32 | 32-34 | 34-36 | 36-38 | 38-40  | 40-42   | 42-44   | 44-46   | 46-48   | 48-50   |

| MEN'S              | XXS   | XS    | S     | M      | L       | XL      | 2XL     | 3XL     | 4XL     | 5XL     | 6XL     |
|--------------------|-------|-------|-------|--------|---------|---------|---------|---------|---------|---------|---------|
| DRESS SIZE         |       |       |       |        |         |         |         |         |         |         |         |
| GERMANY/EUROPE     | 44    | 46    | 48    | 50     | 52      | 54-56   | 56-58   | 58-60   | 62-64   | 66-68   | 70-72   |
| CHEST TO FIT (CM)  | 82-87 | 87-92 | 92-97 | 97-102 | 102-107 | 107-112 | 112-117 | 117-122 | 122-127 | 127-132 | 132-137 |
| CHEST TO FIT (INS) | 32-34 | 34-36 | 36-38 | 38-40  | 40-42   | 42-44   | 44-46   | 46-48   | 48-50   | 50-52   | 52-54   |

## SHIRTS

| LADIES'            | XXS   | XS    | S     | M     | L     | XL     | 2XL     | 3XL     | 4XL     | 5XL     | 6XL     |
|--------------------|-------|-------|-------|-------|-------|--------|---------|---------|---------|---------|---------|
| DRESS SIZE         |       |       |       |       |       |        |         |         |         |         |         |
| UK                 | 6     | 8     | 10    | 12    | 14    | 16     | 18      | 20      | 22      | 24      | 26      |
| FRANCE             | 34    | 36    | 38    | 40    | 42    | 44     | 46      | 48      | 50      | 52      | 54      |
| ITALY              | 38    | 40    | 42    | 44    | 46    | 48     | 50      | 52      | 54      | 56      | 58      |
| GERMANY/EUROPE     | 32    | 34    | 36    | 38    | 40    | 42     | 44      | 46      | 48      | 50      | 52      |
| CHEST TO FIT (CM)  | 72-77 | 77-82 | 82-87 | 87-92 | 92-97 | 97-104 | 104-112 | 112-120 | 120-130 | 130-137 | 137-144 |
| CHEST TO FIT (INS) | 28-30 | 30-32 | 32-34 | 34-36 | 36-38 | 38-41  | 41-44   | 44-47   | 47-51   | 51-54   | 54-57   |

| MEN'S                         | S         | M      | L         | XL        | 2XL     | 3XL       | 4XL     | 5XL     | 6XL     |
|-------------------------------|-----------|--------|-----------|-----------|---------|-----------|---------|---------|---------|
| DRESS SIZE                    |           |        |           |           |         |           |         |         |         |
| COLLAR TO FIT (CM)            | 37-38     | 39-40  | 41-42     | 43-44     | 45-46   | 47-48     | 49-50   | 51-52   | 53-54   |
| DUAL COLLAR SIZES (INS)       | 14.5/15   | 15.5   | 16/16.5   | 17/17.5   | 18      | 18.5/19   | 19.5    | 20      | 21      |
| INDIVIDUAL COLLAR SIZES (INS) | 14.5   15 | 15.5   | 16   16.5 | 17   17.5 | 18      | 18.5   19 | 19.5    | 20      | 21      |
| CHEST TO FIT (CM)             | 92-97     | 97-102 | 102-107   | 107-112   | 112-117 | 117-122   | 122-127 | 127-132 | 132-137 |
| CHEST TO FIT (INS)            | 36-38     | 38-40  | 40-42     | 42-44     | 44-46   | 46-48     | 48-50   | 50-52   | 52-54   |

## TROUSERS

| UK (INS) | 28 | 30 | 32 | 34 | 36 | 38 | 40 | 42 | 44 | 46 | 48 |
|----------|----|----|----|----|----|----|----|----|----|----|----|
| EUROPE   | 44 | 46 | 48 | 50 | 52 | 54 | 56 | 58 | 60 | 62 | 64 |

|                  | SHORT | REGULAR | LONG |
|------------------|-------|---------|------|
| LEG LENGTH (CM)  | 76    | 81      | 86   |
| LEG LENGTH (INS) | 30    | 32      | 34   |

## SWEAT PANTS

| LADIES'            | XS   | S    | M  | L  | XL |
|--------------------|------|------|----|----|----|
| DRESS SIZE         |      |      |    |    |    |
| UK                 | 8    | 10   | 12 | 14 | 16 |
| WAIST TO FIT (CM)  | 63.5 | 68.5 | 74 | 79 | 84 |
| WAIST TO FIT (INS) | 25   | 27   | 29 | 31 | 33 |

| MEN'S              | XS | S  | M  | L    | XL   | 2XL  | 3XL   |
|--------------------|----|----|----|------|------|------|-------|
| DRESS SIZE         |    |    |    |      |      |      |       |
| WAIST TO FIT (CM)  | 71 | 76 | 81 | 86.5 | 91.5 | 96.5 | 101.5 |
| WAIST TO FIT (INS) | 28 | 30 | 32 | 34   | 36   | 38   | 40    |

## ALL CHILDREN'S PRODUCTS (excluding sweat pants)

| AGES (YEARS)       | 1-2   | 3-4   | 5-6   | 7-8   | 9-10  | 11-12 | 13-14 | 15-16 |
|--------------------|-------|-------|-------|-------|-------|-------|-------|-------|
| HEIGHT (CM)        | 90    | 104   | 116   | 128   | 140   | 152   | 164   | 176   |
| CHEST TO FIT (CM)  | 51-56 | 56-63 | 63-71 | 71-76 | 76-81 | 81-86 | 86-91 | 91-96 |
| CHEST TO FIT (INS) | 20-22 | 22-25 | 25-28 | 28-30 | 30-32 | 32-34 | 34-36 | 36-38 |

## SWEAT PANTS (children)

| AGES (YEARS)       | 3-4  | 5-6 | 7-8 | 9-10 | 11-12 |
|--------------------|------|-----|-----|------|-------|
| HEIGHT (CM)        | 104  | 116 | 128 | 140  | 152   |
| WAIST TO FIT (CM)  | 47   | 50  | 53  | 56   | 62    |
| WAIST TO FIT (INS) | 18.5 | 20  | 21  | 22   | 24.5  |

