

# THE COLLECTION

PROFESSIONAL DRESSING FOR THE WORKPLACE



**BUSINESSWEAR  
HOSPITALITYWEAR  
OUTERWEAR**

**CHEFSWEAR  
BEAUTY & SALON  
ACTIVE CARE WEAR**

# CONTENTS

Welcome to Premier. The UK's leading name in quality uniforms for the Corporate, Hospitality, Healthcare and Beauty industries.

|   |           |
|---|-----------|
| <b>Our Sustainability Journey</b>         | 4 - 5     |
| <b>Ethical &amp; Environmental Policy</b> | 6         |
| <b>What's New in 2024</b>                 | 7         |
| <b>Outerwear</b>                          | 10 - 27   |
| <b>Shirts &amp; Blouses</b>               | 28 - 47   |
| <b>Ties &amp; Scarves</b>                 | 48 - 52   |
| <b>Knitwear</b>                           | 53 - 59   |
| <b>Trousers, Chinos &amp; Shorts</b>      | 60 - 65   |
| <b>Polo Shirts</b>                        | 66 - 79   |
| <b>Casual Shirts &amp; Tees</b>           | 80 - 89   |
| <b>Waistcoats</b>                         | 90 - 91   |
| <b>Aprons &amp; Tabards</b>               | 92 - 133  |
| <b>Chefswear</b>                          | 134 - 153 |
| <b>Beauty &amp; Salon</b>                 | 154 - 160 |
| <b>Healthcare</b>                         | 161       |
| <b>Onna by Premier</b>                    | 162 - 171 |
| <b>Size Guide</b>                         | 172 - 173 |
| <b>Index</b>                              | 174 - 175 |

**Featured right**  
Models wear PR190 & PR191 'Swap & Pop' Customisable Apron Body and Straps, page 102, with PR219 & PR319 'Comis' Tees, page 82



# OUR SUSTAINABILITY JOURNEY

## Responsible Cotton Sourcing

Where we can, we source cotton that has been grown organically, using less water and without toxic pesticides.

## Reusing Plastics

The recycled polyester in our garments comes from post-consumer raw material, like plastic bottles.

## Better Packaging

We are reducing the amount of packaging for our products and use recycled solutions where we can.

## Social Compliance

The people who make our garments work in factories that are audited to ensure ethical, social and environmental standards are maintained.

## Memberships & Associations

We are a members of Better Cotton™ and also support Fairtrade® farmers by purchasing their cotton.



## Community Engagement

It's important to us to give back, which is why we donate and sponsor charities that benefit the communities where our products are made.

## Shared Values

We always strive to do better and encourage our supply chain to champion our social and environmental values.



For more information about our sustainability journey, visit our website, [www.premeirworkwear.com/sustainability](http://www.premeirworkwear.com/sustainability)

# Ethical and Environmental Policy

People, Production & The Planet

## Ethical Production

Our manufacturing facilities and supply chains are audited by some of the world's leading organisations. This allows us to monitor and assess workplace standards by working closely with our suppliers to encourage continuous improvements.



## Product Certification

Selected products carry certifications to back up our sustainability claims.



## Initiatives & Associations

We are proud members of Better Cotton™ and we support Fairtrade® farmers by purchasing their cotton.



# What's New For 2024?

Innovation and style are at the forefront in 2024. Our latest collections are designed to offer a pioneering range of colours, materials and styles. Sized to fit everybody with comfort and confidence. So, whether you're looking for cool chefswear, branded fleeces or signature shirts, you'll find them all in one book. And that includes Onna by Premier – our exclusive new range that will change the way you think about health and beauty uniforms. Discover more about the Onna collection on page 162.

### Swap & Pop with colour

How can you create hundreds of different looks with one apron? Simple; we split it into two. With 20 shades of neckbands and waist ties, and 10 apron body colours, there are 200 different colour combinations to play with. That means there's no need to go bespoke to get your brand colours. Swap & Pop is the quick and simple way to kit your staff out in aprons that look custom made, but without the hefty price tag. Add branding and personalisation and the possibilities are endless. We wonder why we didn't think of it before!

### Our recipe for success

Life in the kitchen is like a pressure cooker. Chefs told us they wanted 'cooler' garments in every sense of the word. So we've cooked up a stylish new range designed in lightweight, recycled fabrics that look and feel great to wear. Perfect for chefs who care as much about what goes into their uniform as they do about the provenance of the ingredients in their dishes.

### The pocket you've been waiting for

Love our PR151 waist aprons but can't live without the pockets in the PR158? We've added a pocket into our classic apron shape to give you a brand new PR141 Pocket Waist Apron. A bright idea that's available in recycled polyester and six of your favourite shades from the 'Colours Collection'.

### Crafted for artisans

Our PR181 'Artisan's Choice' apron is tailored with soft lines, rounded edges and finer straps with metal eyelets and a double pocket. A beautiful apron cut from strong canvas that you can style your way - as a full bib or folded down to a neat half apron.

### Recyclight® microfleece

We've also introduced an exciting new range of Recyclight® full and ¼ zipped microfleece. Warm and lightweight, the 100% recycled polyester fabric is anti-pill and incredibly soft, making it ideal for the widest range of applications. Just add an embroidered logo for the perfect finishing touch.





## SAY HELLO TO ACTIVE CARE WEAR

Onna is Active Care Wear - designed specifically for on-the-go professionals. We've engineered technical fabrics with 4-way stretch to let you flex; breathable fibres to keep you cool and easy-care fabrics to keep you looking good. We've also included all the key features you need for ultimate practicality. Basically, we've put in the work, so you don't have to!



**NEW RANGE**  
See page 162

# OUTERWEAR

## CORPORATE LOOKS

---

If you're in and out of the cold, you need warm layers for all weathers. Our latest outerwear collection has got you covered with softshell jackets and gilets, fleeces and padded jackets that layer perfectly with our other workwear and hospitality ranges – including those with Artisan trims. Smart details like hidden zips make decoration easy for a truly professional finish. So, you can style a complete top-to-toe solution, for men or women, in branded and co-ordinated colourways.

Models wear PR810 and PR812 Windchecker®  
Printable & Recycled Softshell Jackets, see page 12



# Windchecker® Printable & Recycled Softshell Outerwear

Brandable  
40° Wash

**Windchecker® Printable & Recycled Softshell Jacket** ■ Two layer zip through jacket with chin guard, Zipped side pockets, Hook 'n' loop strip to the cuffs, Elastic drawcord to the hem, Bonded fleece inner layer ■ 100% Recycled Polyester, 280gsm, 3 colours.

**PR810** Men's sizes: S/35" – 4XL/53" **PR812** Women's sizes: XS/8 – 2XL/18

**Windchecker® Printable & Recycled Gilet** ■ Two layer zip through gilet with chin guard, Zipped side pockets, Elastic drawcord to the hem, Bonded fleece inner layer ■ 100% Recycled Polyester, 280gsm, 3 colours.

**PR814** Men's sizes: S/35" – 4XL/53" **PR816** Women's sizes: XS/8 – 2XL/18



**Printability**  
Perfect base for all types of print applications

**Recycled fabric**  
Polyester made from post-consumer plastics



**WIND CHECKER**

- **Softshell outer**  
for wind and water resistance
- **Fleece inner**  
for warmth and softness



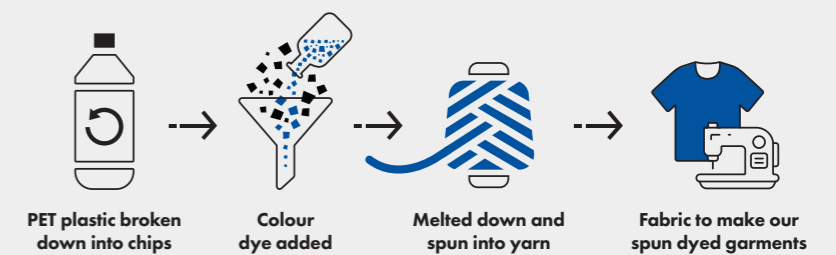
# Spun Dyed Recycled Zip-Through Sweat

Spun dyeing uses 66% less water, 75% fewer chemicals and 60% less CO<sub>2</sub> compared to traditional dyeing methods.

**Spun Dyed Recycled Zip-Through Sweat** ■ Made with spun dyed recycled polyester yarn, Contrast zip detail, Two external zipped pockets, High neck cadet collar ■ 100% Recycled Polyester, 280gsm, 3 colours.

**PR808** Men's sizes: S/35" – 4XL/53"

**PR809** Women's sizes: XS/8 – 2XL/18



40° Wash Brandable







# 'Recyclight'® Padded Jacket

'Recyclight'® Padded Jacket ■ Zip-through padded jacket with horizontal baffle detail, Two zipped side pockets, Warm, lightweight and water-resistant, Zip access in the lining for embroidery applications, Comes with a handy stuff sack ■

Outer: 100% Recycled Nylon, Inner: 100% Recycled Polyester, 38gsm, 2 colours.

**PR817** Men's sizes: S/35" – 4XL/53"

**PR819** Women's sizes: XS/8 – 2XL/18



■ Open pocket to the inner lining



■ Two zipped side pockets

■ Made from 100% recycled nylon and polyester



40° Wash   Brandable

Comes with a handy stuff sack



# 'Recyclight'® Padded Gilet

'Recyclight'® Padded Gilet ■ Zip-through padded gilet with horizontal baffle detail, Two zipped side pockets, Warm, lightweight and water-resistant, Zip access in the lining for embroidery applications, Comes with a handy stuff sack ■  
Outer: 100% Recycled Nylon, Inner: 100% Recycled Polyester, 38gsm, 2 colours.

- PR811** Men's sizes: S/35" – 4XL/53"
- PR815** Women's sizes: XS/8 – 2XL/18



■ Cadet collar

■ Two zipped side pockets

■ Warm, lightweight and water-resistant



40° Wash    Brandable



# 'Artisan' Fleece Jacket

'Artisan' Fleece Jacket ■ Contrast trim detail, Zip through style with two-way zipper, External zipped side pockets, Front and back panels ■ 100% Polyester, 260gsm, 5 colours.

**PR823** Men's sizes: S/34" – 3XL/54" ■ **PR824** Women's sizes: XS/8 – 3XL/20



40° Wash    Brandable



# 'Artisan' Fleece Gilet

Brandable

40° Wash

'Artisan' Fleece Gilet ■ Contrast trim detail, Zip through style with two-way zipper, External zipped side pockets, Front and back panels ■ 100% Polyester, 260gsm, 5 colours.

**PR803** Men's sizes: S/34" – 3XL/54"

**PR804** Women's sizes: XS/8 – 3XL/20



Black/Black

Black/Brown

Navy/Brown

Burgundy/Brown

Moss Green/Brown



# 'Recyclight'® Full Zip Micro Fleece

'Recyclight'® Full Zip Micro Fleece ■ Long sleeve zip-through microfleece, Anti-pill fleece fabric, Cadet collar, Storm flap and chin guard, Side pockets ■ 100% Recycled Polyester, 200gsm, 3 colours

**PR830** Men's sizes: S/35" – 4XL/53"

**PR832** Women's sizes: XS/8 – 3XL/20



■ Side seamed pockets



■ Cadet collar



■ Anti-pill fleece fabric

40° Wash

Brandable



NEW



NEW

PR831



# Unisex 'Recyclight'<sup>®</sup> ¼ Zip Micro Fleece

Unisex 'Recyclight'<sup>®</sup> ¼ Zip Micro Fleece ■ Quarter-zip through microfleece, Anti-pill fleece fabric, Cadet collar, Storm flap and chin guard, Side pockets ■ 100% Recycled Polyester, 165gsm, 3 colours



**PR831** Unisex sizes: XS/33" - 4XL/53"



40° Wash Brandable

# SHIRTS & BLOUSES

## THE SHIRT EDIT

---

From best-selling poplins in an incredible range of colours and sizes, to cotton-rich Oxfords and casual checks, our shirts are designed to suit every corporate look. An unrivalled choice of fits ranging from tailored cuts with formal styling to laid back options that maximise comfort. All cut from premium quality fabrics that are so easy to care for, they take the hard work out of work wear.



**22**  
COLOURS

# Easy Care Poplin Shirts



**Long Sleeve Poplin Shirt** ■ 65% Polyester, 35% Cotton, 105gsm, 22 colours

**PR200 Men's:** Formal collar styling, Left chest open Mitred pocket, Double button fastening on the cuff ■ Sizes: **14.5"/37cm – 23"/56cm\***

**PR300 Women's:** Soft collar styling, Rounded bottom hem, Styled with bust and back darts ■ White: 115gsm ■ Sizes: **6/2XS – 30/8XL\***

**Short Sleeve Poplin Shirt** ■ 65% Polyester, 35% Cotton, 105gsm, 22 colours

**PR202 Men's:** Formal collar styling, Left chest open Mitred pocket, Self coloured buttons ■ Sizes: **14.5"/37cm – 23"/56cm\***

**PR302 Women's:** Soft collar styling, Rounded bottom hem, Styled with bust and back darts ■ White: 115gsm ■ Sizes: **6/2XS – 30/8XL\***

\*Men's sizes 20"/50cm, 21"/52cm, 22"/54cm and 23"/56cm only available in selected colours

\*Women's sizes 28/7XL and 30/8XL only available in selected colours

40° Wash   Easy Care   Tailored Fit   Brandable





# 'Grandad' Shirt

**Banded Collar 'Grandad' Long Sleeve Shirt** ■ 65% Polyester, 35% Cotton, 115gsm ■ 2 colours

**PR258 Men's:** Banded collar, Top button fastening, Double button cuff ■ Sizes: **XS/30" – 3XL/54"**

**PR358 Women's:** Banded collar, Top button fastening, Bust and back darts ■ Sizes: **XS/8 – 2XL/18**

Brandable  
40° Wash  
Modern Fit



NEW COLOUR



PR358

NEW COLOUR

PR258



PR204

PR305

**PR305 Women's ¾ Sleeve Blouse** ■ Soft collar styling, Three-quarter sleeves, Styled with bust and back darts ■ 65% Polyester, 35% Cotton, 105gsm/115gsm White ■ Sizes: **6/2XS - 26/6XL** (Size 6/2XS in Black & White only) ■ 5 colours



40° Wash Tailored Fit Brandable



**PR204 Men's Long Sleeve Slim-Fit Poplin Shirt** ■ Formal collar styling, Double button fastening on the cuff, Fitted style ■ 65% Polyester, 35% Cotton, 105gsm ■ Sizes: **14.5"/37cm - 17.5"/44.5cm** ■ 2 colours



40° Wash  
Slim Fit  
Brandable



# Stretch-Fit Poplin

Stretch-Fit Cotton Poplin Short Sleeve Shirt ■ 97% Cotton, 3% Elastane, 115gsm, 4 colours

**PR246** Men's: Seamless placket, Cut-away collar, Soft and stretchy fabric ■ Sizes: **XS/30"** – **4XL/58"**

**PR346** Women's: Seamless placket, Styled with bust and back darts, Soft and stretchy fabric ■ Sizes: **XS/8** – **3XL/20**

Brandable



Stretch-Fit Cotton Poplin Long Sleeve Shirt ■ 97% Cotton, 3% Elastane, 115gsm, 4 colours

**PR244** Men's: Seamless placket, Cut-away collar, Two button adjustable cuff ■ Sizes: **XS/30"** – **4XL/58"**

**PR344** Women's: Seamless placket, Styled with bust and back darts, Two button adjustable cuff ■ Sizes: **XS/8** – **3XL/20**

40° Wash Modern Fit Cotton Rich Brandable



# Supreme Poplin

Superior fabric and fit

**Short Sleeve Supreme Poplin Shirt** ■ 65% Polyester, 35% Cotton, 125gsm, 3 colours

**PR209 Men's:** Offering a heavier fabric construction, Formal collar styling, Two button fastening on the collar stand ■ Sizes: **14.5"** / 37cm – **19"** / 48cm

**PR309 Women's:** Offering a heavier fabric construction, Styled with bust and back darts, Two button fastening on the collar stand ■ Sizes: **8/XS** – **26/6XL**

**Long Sleeve Supreme Poplin Shirt** ■ 65% Polyester, 35% Cotton, 125gsm, 3 colours

**PR207 Men's:** Offering a heavier fabric construction, Formal collar styling, Two button fastening on the cuff ■ Sizes: **14.5"** / 37cm – **19"** / 48cm

**PR307 Women's:** Offering a heavier fabric construction, Styled with bust and back darts, Two button fastening on the cuff ■ Sizes: **8/XS** – **26/6XL**



40° Wash Modern Fit Easy Care Brandable



**SUPREME  
POPLIN**



# Security Shirts

**Long Sleeve Security Shirt** ▪ Formal collar styling, Two Mitred button down chest pockets, Tabs for application of Epaulettes on the shoulders ▪ 65% Polyester, 35% Cotton

**PR210 Men's:** 105gsm, 3 colours ▪ Sizes: 14.5"/37cm – 19"/48cm

**PR310 Women's:** 115gsm, \*White ▪ Sizes: 8/XS – 26/6XL

40° Wash

Classic Fit

Brandable

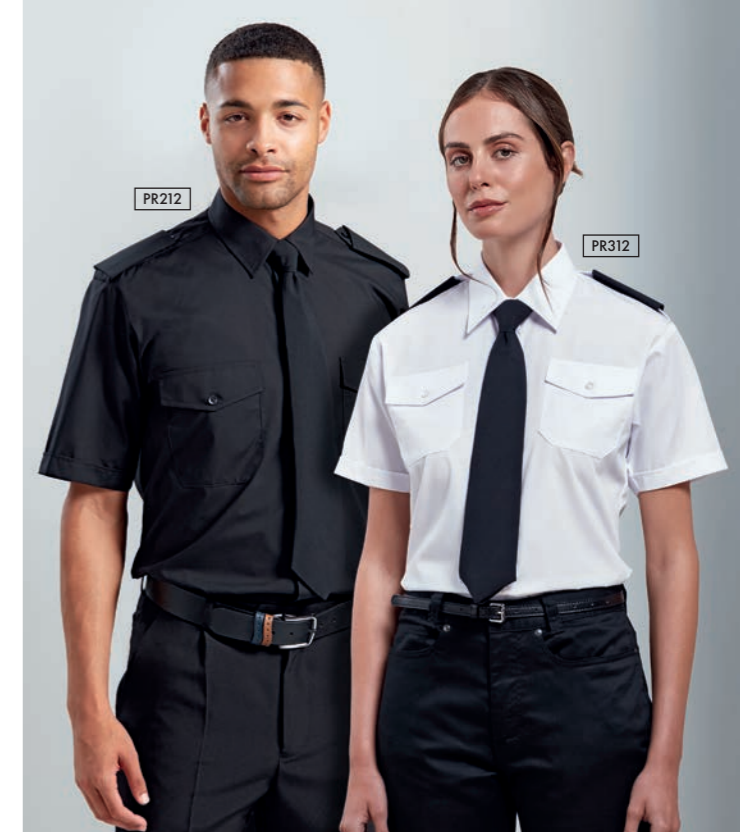
**Short Sleeve Security Shirt** ▪ Formal collar styling, Two Mitred button down chest pockets, Tabs for application of Epaulettes on the shoulders ▪ 65% Polyester, 35% Cotton

**PR212 Men's:** 105gsm, 3 colours

▪ Sizes: 14.5"/37cm – 19"/48cm

**PR312 Women's:** 115gsm, \*White

▪ Sizes: 8/XS – 26/6XL



# Security Accessories

**PR715 Epaulettes** ▪ Adjustable tear release fastening, Embroidery area 9cm x 5cm ▪ 100% Polyester ▪ Wipe clean only ▪ 2 colours

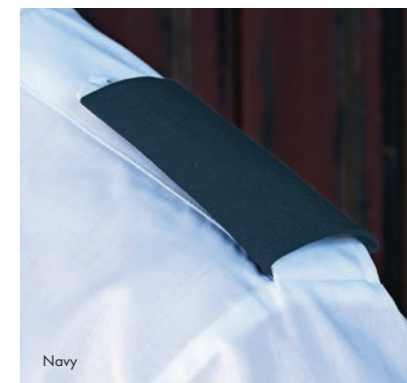
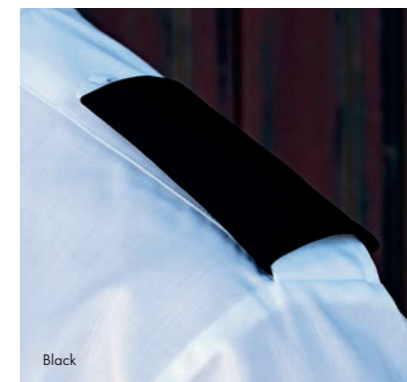
**PR700 Work Tie** ▪ Plain colour styling, Blade width 3.25"/8cm

▪ 100% Polyester ▪ Wipe clean only ▪ 6 colours



**PR710 Clip-on Work Tie** ▪ Clip-on version of PR700, Steel clip attachment, Blade width 3.25"/8cm

▪ 100% Polyester ▪ Wipe clean only ▪ 6 colours





## Signature OXFORD

Looking to elevate your look? Our Signature Oxford shirt can be worn in corporate or casual settings. Tailored in soft cotton with a raised, basket-woven appearance, it has a flattering fit that keeps its shape wash after wash thanks to the added durability of polyester.

Add a tie to the classic button-down collar and you're meeting ready. Loosen the neck, roll up the sleeves and you've got a look that will take you from workday to weekend.



## Oxford Stripe

### Cotton Rich Oxford Stripes Shirt

60% Cotton, 40% Polyester, 135gsm, 5 colours

**PR238 Men's:** Classic button-down collar, Contrast coloured inner neckband and cuff, Two button adjustable cuff ■ Sizes **S/34" – 3XL/54"**

**PR338 Women's:** Button-down collar on the underside, Contrast coloured inner neckband and cuff, Two button adjustable cuff ■ Sizes: **XS/8 – 2XL/18**





**Long Sleeve Signature Oxford Shirt** ■ 70% Cotton, 30% Polyester, 135gsm, 4 colours

**PR234 Men's:** Button-down collar, Left chest open mitred pocket, Double button cuff ■ Sizes: **14.5"/37cm – 19"/48cm**

**PR334 Women's:** Soft collar styling, Rounded bottom hem, Bust and back darts ■ Sizes: **8/XS – 26/6XL**

Modern Fit

Cotton Rich

Brandable



**Short Sleeve Signature Oxford Shirt** ■ 70% Cotton, 30% Polyester, 135gsm, 4 colours

**PR236 Men's:** Button-down collar, Left chest open mitred pocket, Rounded bottom hem ■ Sizes: **14.5"/37cm – 19"/48cm**

**PR336 Women's:** Soft collar styling, Rounded bottom hem, Bust and back darts ■ Sizes: **8/XS – 26/6XL**

40° Wash

Cotton Rich

Brandable

*Signature*  
**OXFORD**

# 'Maxton' Check Long Sleeve Shirt

'Maxton' Check Long Sleeve Shirt ■ Button-down collar on the underside, Soft collar styling, Single button cuff ■ 65% Polyester, 35% Cotton Yarn Dyed Poplin, 110gsm, 5 colours.

**PR252** Men's sizes: S/34" – 3XL/54" ■ **PR352** Women's sizes: XS/8 – 2XL/18



40° Wash Modern Fit Easy Care Brandable





PR321

PR221



Navy/White

Light Blue/White

Black/White

Red/White

# Gingham Cotton Shirts



PR220

PR320

**Long Sleeve Gingham Shirt** ■ 100% Cotton Yarn Dyed Poplin, 115gsm, 4 colours

**PR220 Men's:** Soft collar styling, Two button adjustable cuff, Modern fit ■ Sizes: **XS/30"** – **3XL/54"**

**PR320 Women's:** Soft collar styling, Two button adjustable cuff, Styled with bust and back darts ■ Sizes: **XS/8** – **3XL/20**

**Short Sleeve Gingham Shirt** ■ 100% Cotton Yarn Dyed Poplin, 115gsm, 4 colours

**PR221 Men's:** Soft collar styling, Curved hem, Modern fit ■ Sizes: **XS/30"** – **3XL/54"**

**PR321 Women's:** Soft collar styling, Curved hem, Styled with bust and back darts ■ Sizes: **XS/8** – **3XL/20**

- 40° Wash
- 100% Cotton
- Modern Fit
- Brandable





# Ties & Scarves

**38**  
COLOURS

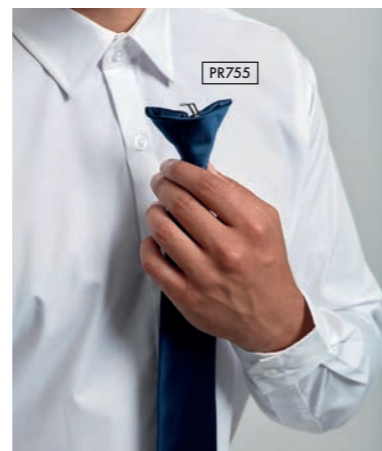
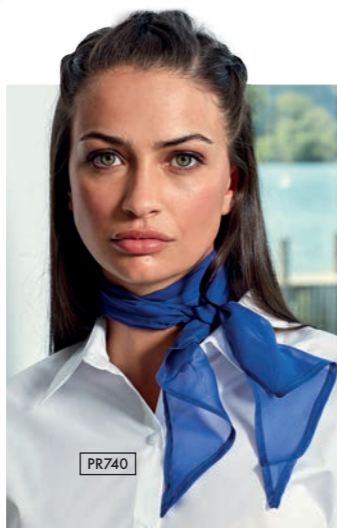


**PR740** 'Colours Collection'

**Chiffon Scarf** ■ Lightweight chiffon, Width 6.5"/16.5cm, Length 38.5"/98cm ■ 100% Polyester ■ Handwash ■ 38 colours

**PR755** 'Colours Collection'

**Clip-on Satin Tie** ■ Clip-on tie, Steel clip attachment, Blade width 3.34"/8.5cm ■ 100% Polyester ■ Handwash ■ 28 colours\*



**PR750** 'Colours Collection' Satin Tie ■ Blade width 3.34"/8.5cm, Length 57"/144cm ■ 100% Polyester ■ 38 colours ■ 40° Wash

**18**  
COLOURS



# Mix & Match in colour



Orange Red Burgundy Fuchsia Magenta Purple Navy Royal Mid Blue Turquoise Black Grey Silver White Emerald Bottle Gold Khaki



Orange Red Burgundy Purple Navy Royal Mid Blue Turquoise Black Grey Silver Bottle Emerald Grass Lime Brown Gold Khaki



**PR785 'Colours Originals'**  
**Clip-on Fashion Tie** ■ Clip-on tie, Steel clip attachment, Blade width 4"/10cm, Length 18"/47cm ■ 100% Polyester ■ Handwash ■ 18 colours

**PR730 'Colours Originals'**  
**Plain Business Scarf** ■ Width 10"/25cm, Length 55"/140cm, ■ 100% Polyester ■ Handwash ■ 18 colours

**PR765 'Colours Originals'**  
**Fashion Tie** ■ Matt appearance, Blade width 4"/10cm, Length 57"/144cm ■ 100% Polyester ■ 40C wash ■ 18 colours

**PR780 PR781**  
**PR783 PR787**  
**Patterned Ties** ■ Blade width 3"/7.5cm, Length 57"/144cm ■ 100% Polyester ■ Handwash



**PR787 Puppy Tooth**



**PR780 Micro Waffle**



**PR783 Waffle Stripe**



**PR781 Micro Dot**



# Ties and Bow Ties



**PR782 Double Stripe**

Blade width 3"/7.5cm, Length 57"/144cm ■ 100% Polyester ■ Handwash ■ 6 colours



**PR784 Sports Stripe**



**PR705 Bow Tie** ■ Satin weave bow tie, Hook and bar fastening  
■ 100% Polyester ■ Wipe clean ■ Colour: Black



**PR793 Slim Tie** ■ Satin weave, Blade width 2"/5cm, Length 58"/147cm ■ 100% Polyester  
■ Wipe clean only ■ 5 colours

# Skinny Ties



**PR789 Slim Knitted Tie** ■ Blade width 2"/5cm, Length 58"/147cm ■ 100% Polyester ■ Handwash ■ 6 colours



# KNITWEAR



## LAYER UP

Assemble your outfit for the colder months with contemporary layers from our knitwear collection. Classic V-neck sweaters, cardigans and sleeveless options that are cotton-rich for comfort and quality.





PR697



PR694



**8**  
COLOURS

OEKO  
TEX  
STANDARD  
100  
11-55731  
Shirley

Red

Burgundy

Purple

Royal

Navy

Charcoal

Black

Bottle

# Cotton Rich Knitwear

## PR694 Men's V-neck Knitted Sweater

- Cotton-rich long sleeve sweater, V-neck styling, Ribbed knit cuffs and hem
- 55% Cotton, 45% Acrylic, 12 gauge knit
- Sizes: **2XS/28" – 4XL/58"** ▪ 8 colours

## PR697 Women's V-neck Knitted Cardigan

- Cotton-rich long sleeve cardigan, Seven button fastening, Ribbed knit cuffs and hem
- 55% Cotton, 45% Acrylic, 12 gauge knit
- Sizes: **XS/8 – 5XL/24** ▪ 8 colours

40° Wash

Cotton Rich

Brandable



PR694

PR697

Styled with PR220 & PR320 'Microcheck' Gingham Shirts, see page 44



PR699

PR698

**PR699 Men's Sleeveless Sweater** ■ V-neck styling, Ribbed knit arm cuffs, neckline and hem, Cotton Rich ■ 55% Cotton, 45% Acrylic, 12 gauge knit ■ Sizes: **XS/30" – 4XL/58"** ■ 3 colours

**PR698 Women's Long-Length Knitted Cardigan** ■ V-neck styling, Seven button fastening, Two front patch pockets ■ 55% Cotton, 45% Acrylic, 12 gauge knit ■ Sizes: **XS/8 – 5XL/24** ■ 3 colours

**PR695 Men's Quarter-Zip Knitted Sweater** ■ Cotton Rich, Quarter zipped, Ribbed knit collar, cuff and hem ■ 55% Cotton, 45% Acrylic, 12 gauge knit ■ Sizes: **XS/30" – 4XL/58"** ■ 3 colours

**PR696 Women's V-Neck Knitted Sweater** ■ V-neck styling, Fine gauge knit, Cotton Rich, Ribbed knit cuffs and hem ■ 55% Cotton, 45% Acrylic, 12 gauge knit ■ Sizes: **XS/8 – 5XL/24** ■ 3 colours

Brandable

Cotton Rich

40° Wash



PR692



PR696

PR695

40° Wash

Cotton Rich

Brandable

Charcoal

Navy

Black

**PR692 Men's Crew-Neck Cotton Rich Knitted Sweater** ■ Fine knit, Crew-neck styling, Ribbed knit neck, hem and cuffs ■ 55% Cotton, 45% Acrylic, 12 gauge knit ■ Sizes: **2XS/28" – 4XL/58"** ■ 3 colours



PR400

PR402

# 'Essential' Acrylics

**PR400 'Essential' Acrylic Men's V-neck Sweater** ■ Ribbed knit neck, hem and cuffs, Contemporary V-neck styling, Fine knit ■ 100% Acrylic, 12 gauge knit ■ Sizes: **XS/30" – 5XL/62"** ■ 2 colours

**PR402 'Essential' Acrylic Women's V-neck Cardigan** ■ Ribbed knit neck, hem and cuffs, Contemporary V-neck styling, Fine knit ■ 100% Acrylic, 12 gauge knit ■ Sizes: **XS/8 – 2XL/18** ■ 2 colours



40° Wash

Easy Care

Brandable

# Performance 'Chino' Jeans

**Performance 'Chino' Jeans** ■ Front and back pockets, Rivet detail, Zip fly with metal button fastening on waistband, Stretch fabric ■ Regular leg 31"/79cm, Long leg 34"/86cm ■ 63% Polyester, 35% Cotton, 2% Elastane, 260gsm, 4 colours.

**PR560** Men's sizes: **XS/30" – 4XL/44"** **PR570** Women's sizes: **XS/8 – 5XL/24**



**STRETCH**  
60° Wash  
Brandable



# Trousers & Clip-on Braces

## PR536 Women's Straight Leg Trousers

- Trousers with a deep waistband, YKK fastening zip, Cross-over waistband with two button fastening
- 100% Polyester, 185gsm
- Sizes: **XS**/8 – **5XL**/24, Regular leg 31"/79 cm, Long leg 34"/86 cm
- Colour: Black

40° Wash

Brandable



- ## PR701 Clip-on Trousers Braces
- Elastic 'Y' back strap braces, Three non-slip clip buckles for attachment, Fully adjustable with lock buckles
  - 60% Polyester, 40% Rubber
  - 5 colours



# Workwear 'Cargo' Shorts



## PR564 Men's Workwear 'Cargo' Shorts

- Mobile friendly pockets with hook and loop sealed fastening, Belt loops, metal button and YKK zip for fastening, Single patch pocket to the reverse
- 65% Recycled Polyester, 35% Cotton, 195gsm
- Sizes: **XS**/30" – **4XL**/44" ▪ 2 colours



60° Wash

Brandable



# Performance 'Chino' Shorts

**Performance 'Chino' Shorts** ■ Front and back pockets, Rivet detail, Covered YKK zip fly with single metal button fastening on the waistband, Stretch fabric ■ 63% Polyester, 35% Cotton, 2% Elastane, 260gsm, 2 colours.

**PR562** Men's sizes: XS/30" – 4XL/44" **PR572** Women's sizes: XS/8 – 5XL/24



**STRETCH**  
60° Wash  
Brandable



# POLO SHIRTS

## CLASSIC CONFIDENCE

---

It's a classic for a reason. Practical and versatile, a polo shirt is a staple for every working wardrobe. But that doesn't mean they have to be bland. Inspired by today's dynamic workplace, we've devised a colourful collection of polos that work wherever you do. In Coolchecker® and Coolchecker® Plus fabric that is breathable and wicking, so you'll never get hot under the collar. Heavyweight polycotton and spun dyed fabrics that keep their colour in a 60°C wash. With a choice of short or long sleeves, button or snap fastening. So, whatever you do, you can be confident a Premier polo will stand up to the job.

Models wear PR615 and PR616  
Coolchecker Polo Shirts, see page 70



16  
COLOURS



PR630

PR632



**COOL**<sup>®</sup> **Plus**  
CHECKER

**PREMIER**<sup>®</sup>  
UNIFORMS THAT WORK FOR YOU

# Performance Polo Shirts

**Coolchecker® Plus Pique Polo** ■ Double pique knit for heavier construction, Four channel yarn for superior wicking and breathability, Ribbed knit collar and cuffs, Three button placket, Snag and crease resistant, Silvadur™ technology for antimicrobial properties ■ 100% Polyester double pique knit, 185gsm, 16 colours

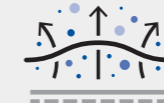
**PR630** Men's sizes: 5/35" – \*6XL/59" **PR632** Women's sizes: XS/8 – \*\*4XL/22

\*and \*\*only available in selected colours

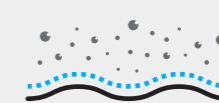
60° Wash Easy Care Brandable



**Air**  
flows through the fabric



**Moisture**  
drawn away from skin



**Fabric**  
engineered to evaporate  
moisture using body heat.



**Antimicrobial**  
which releases silver ions that  
destroy the bacteria that  
causes odour, material  
degradation and discolouration.

**20**  
COLOURS

# Coolchecker® Polo Shirt


**Coolchecker® Pique Polo Shirt** ■ Side panels for fitted shape, Lightweight and breathable moisture wicking fabric, Three button placket, Ribbed knit collar and cuffs ■ 100% Polyester pique knit, 155gsm, 20 colours

**PR615** Men's sizes: S/35" – \*5XL/51"

**PR616** Women's sizes: XS/8 – 2XL/18



**COOL**  
CHECKER®



- Allows air flow through fabric
- Drawing moisture away from the body
- Fast dry and crease resistant

40° Wash

Modern Fit

Brandable



\*only available in selected colours

**COOL**  
CHECKER



PR615

PR616

11  
COLOURS



# Coolchecker® Contrast Polo Shirts

**Contrast Tipped Coolchecker® Polo Shirt** ▪ Contrast trim on collar, placket and sleeves, Side panels for fitted shape, Ribbed knit collar and cuffs, Three button placket ▪ 100% Polyester pique knit, 155gsm, 11 colours

**PR618** Men's sizes: S/35" – 4XL/48"

**PR619** Women's sizes: XS/8 – 2XL/18

40° Wash   Modern Fit   Brandable



▪ Contrast trim ▪ Ribbed knit collar and cuffs



Red/Black

Black/Red

Black/Orange

Black/Sunflower

Black/Lime

Navy/White

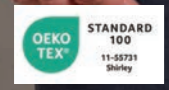
Black/Purple

Black/Turquoise

Royal/White

Black/White

Dark Grey/Silver



# Recycled Spun Dyed Polo Shirt

Spun dyeing uses 66% less water, 75% fewer chemicals and 60% less CO<sub>2</sub> compared to traditional dyeing methods.

**Recycled Spun Dyed Polo Shirt** ■ Made with spun dyed recycled polyester yarn, Ribbed knit collar and cuffs, Three button placket ■ 100% Recycled Polyester, 160gsm, 3 colours

**PR631** Men's sizes: S/35" – 4XL/53"

**PR633** Women's sizes: XS/8 – 2XL/18



Black

French Navy

Dark Grey



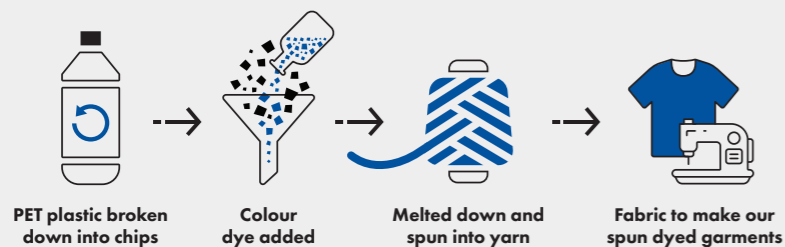
60° Wash

Brandable



PR633

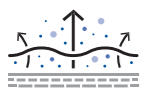
PR631



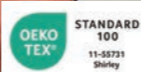


PR617

**COOL**  
CHECKER®



- Allows air flow through fabric
- Drawing moisture away from the body
- Fast dry and crease resistant



## Long Sleeve Coolchecker® Polo Shirt

**PR617 Long Sleeve Coolchecker® Pique Polo** ■ Ribbed knit collar and cuffs, Moisture management wicking fabric, Three button placket ■ 100% Polyester Pique, 155gsm ■ Sizes: **XS/33" – 4XL/48"** ■ 2 colours

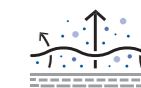
40° Wash

Brandable



PR612

**COOL**  
CHECKER®



- Allows air flow through fabric
- Drawing moisture away from the body
- Fast dry and crease resistant



## Snap Button Fastening

**PR612 Coolchecker® Studded Polo** ■ Two pop stud fastening on the placket, Wicking properties, Self-fabric collar ■ 100% Polyester pique, 140gsm ■ Sizes: **XS/33" – 3XL/50"** ■ 6 colours

60° Wash

Brandable



▪ Extra length through the body

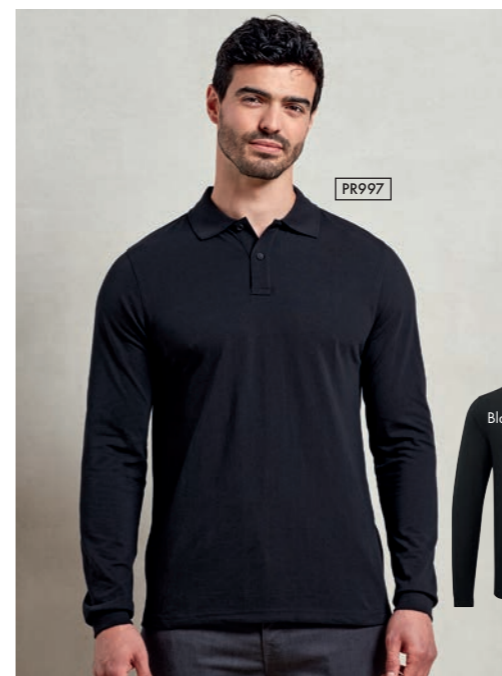
## Studded Polo

**PR610 Studded Polo** ▪ Three pop stud placket, Extra body length, Durable pique knit ▪ 65% Polyester, 35% Cotton, 200gsm ▪ Sizes: **S/34" – 3XL/52"** ▪ 4 colours

50° Wash

Brandable

## 'Essential' Heavyweight Polo Shirts



**PR995 'Essential' Unisex Short Sleeve Workwear Polo Shirt**

▪ Antimicrobial textile technology designed to kill microbes on the fabric surface, Ribbed knit collar and cuff, Two button placket, Extra body length ▪ 65% Polyester, 35% Cotton, powered by HeiQ Viroblock, 200gsm ▪ Sizes: **S/35" – 4XL/53"** ▪ 5 colours

**PR997 'Essential' Unisex Long Sleeve Workwear Polo Shirt**

▪ Antimicrobial textile technology designed to kill microbes on the fabric surface, Ribbed knit collar and cuff, Two button placket, Extra body length ▪ 65% Polyester, 35% Cotton, powered by HeiQ Viroblock, 200gsm ▪ Sizes: **S/35" – 4XL/53"** ▪ 2 colours

60° Wash

Brandable



**HEIQ VIROBLOCK**

Powered by HeiQ Viroblock, a world-leading innovative Swiss textile technology.



# 'Long-John' Roll-Sleeve Tee

'Long-John' Roll-Sleeve Tee ■ Roll-sleeve with button and tab fastening on the upper arm, Round neck with three button placket, Ribbed bound neck and cuffs ■ 82% Polyester, 14% Viscose, 4% Elastane, 190gsm, 5 colours.

**PR218** Men's sizes: XS/30" – 3XL/54" **PR318** Women's sizes: XS/8 – 2XL/18



Black    Grey Marl    Indigo    White/Navy    White

40° Wash    Modern Fit    Easy Care    Brandable



PR218

PR318

# 'Comis' Cotton-Rich Tee

'Comis' Cotton-Rich Tee ■ Narrow banded collar, placket with single button, soft feel  
 ■ 60% Cotton, 40% Recycled Polyester, 160gsm. **Grey Marl:** 90% Cotton, 10% Viscose, 160gsm, 5 colours

**PR219** Men's sizes: S/34" – 3XL/54"

**PR319** Women's sizes: XS/8 – 2XL/18



60° Wash

Cotton Rich

Brandable



† Grey Marl does not contain recycled polyester



PR219

PR319



# Chambray Shirt Organic & Fairtrade Certified

These garments are certified to display the Fairtrade Cotton Mark. It means the cotton they're made from has been traded, audited and sourced from Fairtrade producers. Now that's a label that's definitely worth wearing.

**Chambray Shirt - Organic & Fairtrade Certified** ■ Two chest pockets with combined pen pocket to the left ■ Double button cuff for adjustment with a single button sleeve guard ■ Button-down collar on the underside ■ 100% Organic Cotton, Fairtrade Certified, 160gsm, 2 colours

**PR247** Men's sizes: S/34" - 3XL/54" **PR347** Women's sizes: XS/8 - 3XL/20



Contains 100% OCS Certified Organically Grown Cotton  
Certified by Control Union  
CU-COC-1191916

- 40° Wash
- Modern Fit
- 100% Cotton
- Brandable

# Jean Stitch Denim Shirts

**Jean Stitch Denim Shirt** ■ 100% Cotton Ring Spun Denim, 155gsm, 2 colours

**PR222 Men's:** Contrast stitch details, Left chest button-down chest pocket, Buttoned cuff and sleeve guard ■ Sizes: **XS/30" – 3XL/54"**

**PR322 Women's:** Contrast stitch details, Two button-down chest pockets, Buttoned cuff and sleeve guard ■ Sizes: **XS/8 – 3XL/20**



100% Cotton Modern Fit Brandable



# 'Mulligan' Check Shirts

Brandable



'Mulligan' Check Long Sleeve Shirt ■ Roll-sleeve option with button fastening on the upper arm, Narrow soft collar styling, Curved hem ■ 100% Cotton Yarn Dyed Poplin, 115gsm, 4 colours.

**PR250** Men's sizes: S/34" – 3XL/54" **PR350** Women's sizes: XS/8 – 2XL/18



■ Roll-sleeve option with button and tab fastening



# 'Ginmill' Check Shirts

'Ginmill' Check Long Sleeve Cotton Shirt ■ Roll-sleeve option with button fastening on the upper arm, Narrow soft collar styling, Curved hem ■ 100% Cotton Yarn Dyed Poplin, 115gsm, 1 colour.

**PR254** Men's sizes: S/34" – 3XL/54" **PR354** Women's sizes: XS/8 – 2XL/18

40° Wash Modern Fit 100% Cotton Brandable



# Waistcoats

For a refined service

**Hospitality Waistcoat** ■ 65% Polyester, 35% Cotton, 195gsm, Colour: Black

**PR620 Men's:** Self-fabric back, Two functional watch pockets, Five button fastening ■ Sizes: **S/36" – 2XL/52"**

**PR621 Women's:** Self-fabric back, Two functional watch pockets, Four button fastening ■ Sizes: **S/10 – 2XL/18**

60° Wash

Brandable



## Herringbone Waistcoat

**Herringbone Waistcoat** ■ Satin lining to the underside and reverse, Lapel collar, Adjusting buckle on the back ■ 50% Wool, 45% Polyester, 5% mixed fibres, 300gsm, 3 colours.

**PR625 Men's sizes:** **XS/32" – 2XL/52"**

**PR626 Women's sizes:** **XS/8 – 2XL/18**

30° Wash

Brandable



Brown Check

Charcoal

Navy



## Lined Polyester Waistcoat

**Lined Polyester Waistcoat** ■ 100% Polyester, 185gsm, Colour: Black

**PR622 Men's:** Satin back with adjuster, Two functional watch pockets, Five button fastening ■ Sizes: **2XS/30" – 2XL/52"**

**PR623 Women's:** Satin back with adjuster, Two functional watch pockets, Four button fastening ■ Sizes: **2XS/6 – 2XL/18**

40° Wash

Brandable

■ Satin back with adjuster





# THAT COLOUR LOOKS GREAT ON YOU!

THE 'COLOURS COLLECTION'

**What's the number one reason customers love our aprons? It has to be our incredible array of colours – a choice that simply can't be matched.**

Customisation comes a close second. Because Premier aprons are also designed for branding and personalisation. And that includes our exclusive Swap & Pop aprons that even let you

customise your neckband and waist tie colours! We think you'll have some fun with that one!

Whether you mix and match apron styles and colours to reflect your brand identity or give staff the option to express themselves with a bright neckband, only Premier lets you indulge your love of colour. With 13 apron styles and up to 62 shades to play with, the possibilities are endless.



Models wear PR150, PR158, PR154 and PR151

# Branding opportunities

Make a strong brand statement with colour. Take inspiration from your interiors and furnishings and run this palette through your staff uniforms. Whether it's loud and proud or soft and muted, we offer a huge choice of colour so you can create your uniform your way.


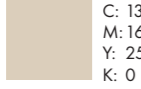


THE 'COLOURS COLLECTION'



## Your colour scheme

Pick a shade that complements your branding.

CMYK colour breakdown

|   |                                  |   |                                 |
|---|----------------------------------|---|---------------------------------|
|  | C: 61<br>M: 35<br>Y: 65<br>K: 35 |  | C: 13<br>M: 16<br>Y: 25<br>K: 0 |
|  | C: 90<br>M: 80<br>Y: 47<br>K: 56 |  | C: 16<br>M: 31<br>Y: 19<br>K: 0 |



## Models wear...

- 1 PR150 'Colours Collection' Bib Apron, page 96
  - 2 PR158 'Colours Collection' Bar Apron with Pocket, see page 101
  - 3 PR154 'Colours Collection' Pocket Bib Apron, see page 98
  - 4 PR151 'Colours Collection' Mid-Length Apron, see page 98
- PR347 Chambray Shirt - Organic & Fairtrade Certified, page 85
- PR906 Chef's Zip-Close Short Sleeve Jacket, see page 139
- PR219 'Comis' Cotton-Rich Tee, see page 82
- PR347 Chambray Shirt - Organic & Fairtrade Certified, page 85



# 'Colours Collection' Bib Apron

**PR150 'Colours Collection' Bib Apron** ■ Adjustable buckle on neckband, 100cm self-fabric ties, Two sizes available ■ 65% Polyester, 35% Cotton, 195gsm. Denim: 70% Cotton, 30% Polyester, 265gsm ■ Size: 86cm x 72cm

\*Extra large size: 102cm x 99cm (Black and White only)



85° Wash    Brandable



|                 |               |
|-----------------|---------------|
| Cornflower      | Mushroom      |
| Royal           | Latte         |
| Marine Blue     | Khaki         |
| Navy            | Natural       |
| Indigo Denim    | Camel         |
| Blue Denim      | Mustard       |
| Cyan            | Sunflower     |
| Light Blue      | Yellow        |
| Peacock         | Lemon         |
| Mid Blue        | Lime          |
| Sapphire        | Oasis Green   |
| Lilac           | Olive         |
| Lavender        | Moss Green    |
| Purple          | Aqua          |
| Rich Violet     | Duck Egg Blue |
| Aubergine       | Turquoise     |
| Fuchsia         | Teal          |
| Magenta         | Emerald       |
| Pink            | Kelly         |
| Rose            | Pistachio     |
| Hot Pink        | Apple         |
| Raspberry Crush | Bottle        |
| Burgundy        | Sage          |
| Red             | *White        |
| Salsa           | Black Denim   |
| Strawberry Red  | Grey Denim    |
| Orange          | Silver        |
| Terracotta      | Steel         |
| Chestnut        | Charcoal      |
| Brown           | Dark Grey     |
| Mocha           | *Black        |



PR150

62  
COLOURS

UP TO  
**50**  
COLOURS



PR154

PR151

|               |                |
|---------------|----------------|
| Burgundy      | Brown          |
| Red           | Strawberry Red |
| Orange        | Terracotta     |
| Fuchsia       | Sunflower      |
| Hot Pink      | *Lemon         |
| Rich Violet   | *Camel         |
| Purple        | Khaki          |
| Aubergine     | *Latte         |
| Chestnut      | Natural        |
| Mocha         | *Grey Denim    |
| *Rose         | *Light Blue    |
| Pink          | Silver         |
| *Lilac        | White          |
| *Mid Blue     | Aqua           |
| Turquoise     | *Duck Egg      |
| Teal          | Apple          |
| Sapphire      | Lime           |
| Marine Blue   | Oasis Green    |
| *Blue Denim   | Sage           |
| Steel         | Olive          |
| *Charcoal     | Dark Grey      |
| Navy          | *Moss Green    |
| Royal         | Emerald        |
| *Indigo Denim | Bottle         |
| *Black Denim  | Black          |



# 'Colours Collection' Aprons

**PR151** 'Colours Collection' Mid-Length Apron ■ Mid-length waist apron, 90cm self fabric ties, Width 70cm, length 50cm ■ 65% Polyester, 35% Cotton, 195gsm ■ 36 colours\*

\*PR151 not available in these colours

**PR154** 'Colours Collection' Pocket Bib Apron ■ Sliding adjustable buckle on neck band, Width 72cm, length 86cm, Tablet friendly centre pocket with combined pen slot ■ 65% Polyester, 35% Cotton, 195gsm ■ 50 colours



85° Wash

Brandable

## 2 in 1 Apron

**PR159** 'Colours Collection' 2-in-1 Apron ■ One apron worn two ways, Bib and waist apron styles, Pocket features on both styles ■ 65% Polyester, 35% Cotton, 195gsm ■ 10 colours



## Children's Apron

**PR149** 'Colours Collection' Children's Bib Apron ■ Safety release mechanism on neckband, Infant sizing: 43cm wide, 53cm long, Junior sizing: 48 wide, 63cm long ■ 65% Polyester, 35% Cotton, 195gsm ■ Sizes: Infant 3-6 years, Junior 7-10 years ■ 16 colours



|          |           |         |               |
|----------|-----------|---------|---------------|
| Pink     | Natural   | Aqua    | White         |
| Fuchsia  | Sunflower | Lime    | Silver        |
| Hot Pink | Khaki     | Emerald | *Grey Denim   |
| Orange   | Sage      | Bottle  | Turquoise     |
| Red      | Olive     | Purple  | *Blue Denim   |
| Burgundy | Dark Grey | Royal   | *Black Denim  |
| Brown    | Black     | Navy    | *Indigo Denim |

\*PR158 not available in these colours

**24**  
COLOURS

**28**  
COLOURS

PR158

PR155

## Pocket Waist Aprons

**PR155** 'Colours Collection' 3 Pocket Waist Apron ■ Three open pockets, 90cm self-fabric ties, Width 60cm, length 33cm ■ 65% Polyester, 35% Cotton, 195gsm ■ 28 colours

**PR158** 'Colours Collection' Bar Apron with Pocket ■ Tablet friendly centre pocket with combined pen slot, 90cm self-fabric ties, Width 80cm, length 90cm ■ 65% Polyester, 35% Cotton, 195gsm ■ 24 colours\*

85° Wash

Brandable



**10**  
COLOURS

PR159



**16**  
COLOURS

PR149



85° Wash

Brandable

Can be worn as a bib apron, doubles over and neck ties are secured away to form a waist apron.



NEW



# Customise Your Apron With 'Swap & Pop'

'Swap & Pop' Customisable Apron & Straps ■ 65% Recycled Polyester, 35% Cotton, 195gsm ■ One size

**PR190 Apron body:** Straps sold separately for dual colour branding (see PR191), Fitted with snap-action press studs to secure straps in place, Self fabric cloth holder, Made with recycled polyester ■ 10 colours

**PR191 Apron straps:** Apron straps with body sold separately for dual colour branding (PR190), Fitted with strong snap-action press studs to secure to apron body, Neckband with adjustable sliding buckle, Made with recycled polyester, Self coloured caps on press studs for colour continuity ■ 20 colours



60° Wash

Brandable

200  
COLOUR  
Combinations



## STEP ONE

Choose your PR190 apron body



## STEP TWO

Choose your set of PR191 neckband and waist ties



## STEP THREE

Pop them all together

PR190 Apron body and PR191 Straps are sold separately

White

Pink

Hot Pink

Burgundy

Red

Orange

Mustard

Lime

Emerald

Bottle

Olive

Brown

Khaki

Sage

Turquoise

Royal

Navy

Purple

Dark Grey

Black

# Contrast Bib Apron

## PR162 'Colours Collection' Contrast Bib Apron

▪ Colour contrasting vertical panel, Sliding adjustable buckle on neckband, Two front slanted pockets ▪ 65% Polyester, 35% Cotton, 195gsm ▪ 7 colours



Brandable



7  
COLOURS



6  
COLOURS



NEW

Sage

Dark Grey

Indigo Denim

Navy

Black Denim

Black

# Zip Pocket Waist Apron

**PR105 Zip Pocket Waist Apron** ▪ Two zipped closed pockets, Centre open pocket, Width 60cm, length 33cm ▪ 65% Polyester, 35% Cotton, 195gsm ▪ Colour: Black



Two zipped pockets

85° Wash

Brandable

Black



# 'Colours Collection' Mid-Length Apron with Pocket

**PR141 'Colours Collection' Mid-Length Apron with Pocket** ▪ Tablet friendly centre pocket with combined pen pocket, 90cm self-fabric ties, 70cm wide by 50 cm long ▪ 65% Recycled Polyester, 35% Cotton, 195gsm. Denims: 70% Cotton, 30% Recycled Polyester, 275gsm ▪ 6 colours

85° Wash

Brandable



# Economy Aprons



**PR165 'Essential' Bib Apron** ■ Classic bib apron, Width 67cm, length 78cm, 75cm self-fabric ties  
 ■ \*Black: 80% Polyester, 20% Cotton. Colours: 65% Polyester, 35% Cotton, 170gsm ■ 6 colours

85° Wash

Brandable



**6**  
COLOURS



# 'Antimicrobial' Apron

**PR996 'Antimicrobial' Apron** ■ Antimicrobial textile technology designed to kill microbes, germs and bacteria on the fabric surface, Buckle on the neckband for height adjustment, 86cm long x 72cm wide, Self fabric ties ■ 65% Polyester, 35% Cotton, powered by HeiQ Viroblock, 195gsm ■ 5 colours



60° Wash

Brandable



PR996

PR167



**PR167 Polyester Bib Apron** ■ Adjustable sliding buckle on neckband, Width 72cm, length 86cm, 90cm self-fabric ties ■ 100% Polyester, 195gsm ■ Colour: White

40° Wash

Brandable



# ARTISAN APRONS

**We've taken Artisan style beyond rustic charm, to a chic, contemporary look that reveals the textures and weaves of premium fabrics.**

Organic denim. Waxed look cotton. Faux leather trims. Our exciting collection of Artisan style aprons are easy on the eye - and even easier to wear. From the soft lines and curved edges of our 'Artisan's Choice' apron, to the kangaroo style pockets and adjustable metal buckles on our Jean Stitch Denim aprons. Quality garments that are well made and hard wearing to create an inspirational look.



# Jean Stitch Denim Aprons

**PR126 Jean Stitch Denim Bib Apron** ■ Four 'kangaroo' style pockets with rivet detail, 90cm self-fabric ties, Adjustable buckle on neck band, Width 72cm, length 86cm ■ 70% Cotton, 30% Polyester, 265gsm ■ 2 colours



**PR125 Jean Stitch Denim Waist Apron** ■ Four 'kangaroo' style pockets with rivet detail, Contrast stitch detail, Length 39.5cm ■ 70% Cotton, 30% Polyester, 265gsm ■ 2 colours



85° Wash

Cotton Rich

Brandable



Styled with PR202 and PR302 Khaki Poplin short sleeve shirt, page 30







# Contrast Denim

**PR127 'Domain' Contrast Denim Bib Apron** ■ Neckband with buckle fastening for height adjustment, Centre pocket with contrast trim, including pen compartment, Metal eyelets secure 100cm contrast fabric ties ■ 70% Cotton, 30% Polyester, 265gsm ■ 2 colours

**PR128 'Domain' Contrast Denim Waist Apron** ■ Mid-length waist Apron measuring 50cm long by 70cm wide, Centre pocket with contrast trim, including pen compartment, Metal eyelets secure 100cm contrast fabric ties ■ 70% Cotton, 30% Polyester, 265gsm ■ 2 colours



■ Oversized eyelets for contrast ties



■ Contrast pocket with rivet detail



- 85° Wash
- Cotton Rich
- Brandable



# Waxed-look Cotton Aprons



**PR134 'District' Waxed-Look Bib Apron** ■ Durable waxed look finish, Oversized jean style pocket with stitch and rivet detail, Contrast colour ties secured in place with metal eyelets, Fabric features including, patch pocket and cloth holder ■ 100% Cotton Denim with Acrylic 'Waxed Look' Coating, 350gsm ■ 2 colours

**PR135 'Division' Waxed-Look Waist Apron** ■ Durable waxed look finish giving a water repellent surface, Contrast fabric features for function and decoration, Oversized jean style pocket with stitch rivet detail, Contrast colour ties secured in place with metal eyelets ■ 100% Cotton Denim with Acrylic 'Waxed Look' coating, 350gsm ■ 4 colours

**PR136 'Division' Waxed-Look Bib Apron with Faux Leather** ■ Durable waxed look finish giving a water repellent surface, Contrast fabric features for function and decoration, Faux leather ties and neckband with adjustable buckle, Tinted denim effect created by contrast coloured yarns ■ 100% Cotton Denim with Acrylic 'Waxed Look' coating, 350gsm ■ 4 colours



# Denim Cotton Bib Apron - Organic & Fairtrade Certified

40° Wash 100% Cotton Brandable

**PR113 Denim Cotton Bib Apron - Organic & Fairtrade Certified** ■ Two mitred pockets measuring 20cm deep x 19.5cm wide, Antique brass/gun metal buckle on neckband for height adjustment, 80cm long x 72cm wide with 107cm long ties, Care label printed on the underside that highlights the environmental credentials of this style ■ 100% Cotton, Organic & Fairtrade Certified, 235gsm ■ 3 colours



PR113

Brown Denim

Indigo Denim

Black Denim

■ Antique brass/gun metal buckle



Contains 100% OCS Certified Organically Grown Cotton Certified by Control Union CB-CUC-1119298



PR122

Indigo Denim

Natural

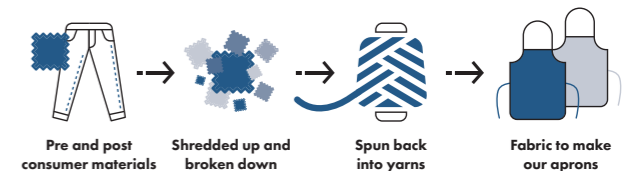
Grey Denim

Black Denim

## 'Regenerate' Bib Apron

**PR122 'Regenerate' Bib Apron** ■ Slanted side pockets with contrast trim, Adjustable knotted neckband, Contrast stitching, Recycled cotton from waste denim, **Black Denim:** 53% Recycled Cotton, 41% Recycled Polyester, 6% Recycled Viscose, **Indigo Denim:** 58% Recycled Cotton, 36% Recycled Polyester, 6% Recycled Viscose, **Grey Denim:** 55% Recycled Cotton, 36% Recycled Polyester, 9% Recycled Viscose, **Natural:** 44% Recycled Cotton, 37% Recycled Polyester, 19% Recycled Viscose, 275gsm ■ 4 colours

60° Wash Cotton Rich Brandable



## 'Metro' Hip Apron

**PR138 'Metro' Utility Hip Apron** ■ Tablet-friendly jeans style riveted pocket, Zip-fastening pocket, Adjustable self-fabric waistband with carabiner fastener ■ 100% Cotton Canvas, 320gsm. Denim: 70% Cotton, 30% Polyester, 265gsm ■ 4 colours

85° Wash | 100% Cotton† | Brandable



PR138

## 'Chino' Cotton Apron

**PR132 'Chino' Bib Apron** ■ Full bib Apron measuring 86cm long by 72cm wide, 'Chino' style stitched pockets with rivets, Neckband with buckle and adjustable snap button fastening ■ 100% Cotton, 235gsm ■ 4 colours

85° Wash | 100% Cotton | Brandable



PR132

## 100% Organic Cotton Bib Apron

**PR102 100% Organic Cotton Bib Apron** ■ 90cm self-fabric ties, Self-fabric neckband, Width 60cm, Length 87cm ■ 100% Organic Cotton, 240gsm ■ 20 colours

85° Wash

100% Cotton

Brandable



PR102

**20**  
COLOURS

Aubergine | Brown

Burgundy | Red

Hot Pink | Orange

Navy | Royal

Purple | Turquoise

Steel | Silver

Dark Grey | White

Natural | Khaki

Apple | Lime

Bottle | Black

▪ Gun metal/antique brass eyelets



▪ Can be worn as a waist apron



▪ Rounded edges create soft lines



# 'Artisan's Choice' Double Pocket Canvas Apron

**PR181 'Artisan's Choice' Double Pocket Canvas Apron** ▪ Heavyweight canvas bib apron with rounded edges, Adjustable knotted neckband and matching waist ties, Centre double pocket, Wear as a full bib or half waist apron, Cotton-rich with recycled polyester ▪ 60% Cotton, 40% Recycled Polyester, 310gsm ▪ 4 colours



Black

Dark Grey

Olive

Natural



Contains 40% RCS Certified Recycled Post Consumer Polyester Certified by Control Union CR-23UG 101938



60° Wash

Brandable

NEW





Contains 100% OCS Certified Organically Grown Cotton  
Certified by Control Union  
CB-CUC-1119298



## Cotton Aprons - Organic & Fairtrade Certified

**PR112 Cotton Bib Apron, Organic & Fairtrade Certified** ▪ Sliding adjustable buckle on neckband, Centre pocket, Width 60cm, Length 84cm ▪ 100% Cotton - Fairtrade Certified, 200gsm ▪ Colour: Black

**PR114 Cotton Waist Apron, Organic & Fairtrade Certified** ▪ 90cm self-fabric ties, Width 70cm, Length 50cm ▪ 100% Cotton - Fairtrade Certified, 200gsm ▪ Colour: Black

- 40° Wash
- 100% Cotton
- Brandable



## Recycled Polyester & Organic Cotton Apron

**PR120 Recycled Polyester and Cotton Bib Apron, Organic & Fairtrade Certified** ▪ Two slanted side pockets measuring 24cm depth by 18cm wide, Adjustable buckle on neckband, Care label printed on the underside that highlights the environmental credentials of this style ▪ 65% Recycled Polyester, 35% Cotton, Organic & Fairtrade Certified, 280gsm ▪ 5 colours

- 60° Wash
- Brandable



# 'Barley' Contrast Stitch Bib Apron

**PR121** 'Barley' Contrast Stitch Bib Apron ■ Eyelet and rivet detail, Adjustable antique brass buckle on neckband, Side pockets and centre zipped pocket, Contrast stitching ■ 65% Recycled Polyester, 35% Cotton, 195gsm ■ 4 colours

60° Wash

Brandable



■ Contrast stitching



# 'Annex' Oxford Bib Apron

**PR144** 'Annex' Oxford Bib Apron ■ Faux leather neckband with buckle and rivet detail, Faux leather cloth holder and side tabs with rivet detail, Centre pocket, Double D-ring fastening to the waist ■ 100% Cotton Yarn Dyed Oxford Weave, 220gsm ■ 5 colours

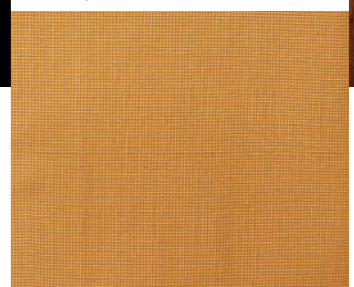
60° Wash

100% Cotton

Brandable



■ Yarn dyed Oxford weave



# 'Calibre' Cotton Canvas Aprons



**PR130 'Calibre' Heavy Cotton Canvas Bib Apron** ▪ Full bib Apron measuring 86cm long by 72cm wide, Heavyweight and durable, Oversized eyelet for knotted neckband ▪ 100% Cotton Canvas, 320gsm ▪ 8 colours

**PR131 'Calibre' Heavy Cotton Canvas Waist Apron** ▪ Mid-length waist Apron measuring 50cm long by 70cm wide, Heavyweight and durable, Metal eyelets secure 90cm self fabric waist ties ▪ 100% Cotton Canvas, 320gsm ▪ 8 colours



▪ Oversized eyelet for neckband

- 85° Wash
- 100% Cotton
- Brandable



**PR137 'Calibre' Heavy Cotton Canvas Pocket Apron** ▪ Four 'kangaroo' style stitched pockets, Oversized eyelet for knotted neckband, Heavyweight and durable ▪ 100% Cotton Canvas, 320gsm ▪ 8 colours







OEKO TEX  
STANDARD 100  
11-55731  
Shirley

85° Wash  
Brandable

PR129



Black Faux Leather



Brown Faux Leather



OEKO TEX  
STANDARD 100  
11-55731  
Shirley

PR119

## Cross-Back 'Barista' Bib Apron

**PR129 Cross-Back 'Barista' Bib Apron** ▪ Supplied with self-fabric straps, Alternative interchangeable straps available (PR119), Front centre pocket with built-in pen slot ▪ Canvas: 100% Cotton, 320gsm. Denims: 70% Cotton, 30% Polyester, 265gsm ▪ 8 colours

**PR119 Cross-Back Interchangeable Apron Straps** ▪ Alternative straps for PR129 Cross Back 'Barista' Bib Apron, Fixed with a buckle fastener to hook on to the main body of the apron, Measuring 170cm x 3cm ▪ 100% Polyurethane ▪ 2 colours

Choose alternative apron straps for an individual look



▪ Self-fabric ties



Black/Black    Black/Brown    Navy/Brown    Khaki/Brown

## 'Espresso' Bib Apron

**PR123 'Espresso' Bib Apron** ▪ Faux leather trim and neckband, Press stud buttons on neckband for height adjustment, Two handy pleat pockets measuring 13cm ▪ 65% Polyester, 35% Cotton with faux leather trim, 195gsm ▪ 4 colours

60° Wash    Brandable



▪ Faux leather trim



▪ 90cm self-fabric ties



OEKO TEX  
STANDARD 100  
11-55731  
Shirley

PR123

**PR 145 Children's Waterproof Apron** ■ Safety release mechanism on neckband, Waterproof fabric, 50cm self-fabric ties ■ 100% Polyester with Polyurethane coating, 110gsm ■ Sizes: Infant 3-6 years, Junior 7-10 years ■ 8 colours



60° Wash

Brandable

8  
COLOURS

PR145



PR174



# Waterproof Wrap Around Tunic

40° Wash Brandable

**PR174 Waterproof Wrap Around Tunic** ■ Waterproof and bleach resistant, V-neck styling, Double centre pocket, Flattering feminine fit measuring 86cm in length ■ 100% Polyester with Polyurethane coating, 110gsm ■ Sizes: **S-M**/10-12, **L-XL**/14-16 ■ 4 colours



8  
COLOURS



PR115

# Waterproof Aprons

**PR115 Waterproof Bib Apron** ■ Adjustable buckle on neckband, Waterproof and bleach resistant fabric, 90cm self fabric ties ■ 100% Polyester with Polyurethane coating, 110gsm ■ 8 colours



60° Wash

Brandable

# 'Tulip' Wrap Around Tunic

**PR177 'Tulip' Wrap-Around Tunic** ■ Over-the-head style, V-neck styling, Centre patch pocket ■ 100% polyester, 185gsm ■ Sizes: **S-M**/10-12, **L-XL**/14-16 ■ 4 colours



Brandable

**FASTENING TIP**

Bring the ties from back to front and tie round your waist on the underside, then take front ties and fasten at the back.



PR177



# Tabards

**PR172 Long Length Pocket Tabard** ▪ Pull-on coverall with a length of 78cm, Side tabs with adjustable press stud fastening, Centre pocket ▪ 65% Polyester, 35% Cotton, 195gsm ▪ Sizes: **S/10 – XL/16** ▪ 3 colours

85° Wash

Brandable



PR172



**PR171 Pocket Tabard** ▪ Pull-on coverall with a length of 68cm, Side tabs with adjustable press stud fastening, Centre pocket ▪ 65% Polyester, 35% Cotton, 195gsm ▪ Sizes: **S/10 – 3XL/20** ▪ 16 colours

85° Wash

Brandable



PR171

16  
COLOURS



# CHEFSWEAR

## WE'RE READY TO TAKE YOUR ORDER

For 2024, we've spiced things up in the kitchen. Chefs spend hours creating exceptional dishes from the finest ingredients, so we turned the tables and asked them what ingredients they need to succeed. The result is uniform choices that celebrate the sheer brilliance, creativity and determination of chefs.

We started with technical Coolchecker® fabrics that wick away moisture and offer maximum comfort and durability. Then we added the kind of attention to detail that we know chefs love. Like zipped chef's jackets with a clever collar loop to contain apron straps. Comfortable cargo inspired pants together with slim fit and denim options. Plus all the pen pockets, under arm vents and press stud fastenings chefs need to put in a gruelling shift.

Get ready to order.

Models wear PR656, PR657 & PR671 see pages, 144 & 148



# Chef's Recycled Short Sleeve Shirt & Trouser

**PR904 Chef's Recycled Short Sleeve Shirt** ■ Made with recycled polyester, Mandarin collar with press stud fastening down the centre placket, Contrast coloured inner neckband helps to conceal marks from day-to-day wear, Chest pocket ■ 65% Recycled Polyester, 35% Cotton, 170gsm ■ Sizes: **XS/30"** – **3XL/54"** ■ 2 colours

**PR557 Chef's Recycled Cargo Trouser** ■ Made with recycled polyester, Tapered lower leg with optional turn-up hems, Elasticated waistband, drawcord and mock fly, Side slip pockets ■ 65% Recycled Polyester, 35% Cotton, 170gsm ■ Sizes: **S/32-34"** – **3XL/44-46"** ■ 1 colour

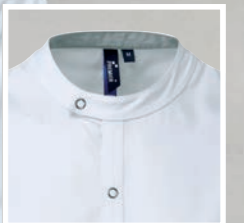
60° Wash

Brandable



NEW

PR904





PR906



# Zippered Chef's Jackets

## PR906 Chef's Zip-Close Short Sleeve Jacket

▪ Zip through fastening, Double pen pocket on left sleeve, Colour contrast underarm, Mandarin collar  
 ▪ White: 65% Polyester, 35% Cotton, 170gsm, Denim: 60% Cotton, 40% Polyester, 230gsm ▪ Sizes: **XS/30"** – **2XL/50"** ▪ 3 colours

60° Wash

Cotton Rich

Brandable



Black Denim

Indigo Denim

White



▪ Zip through fastening

▪ Loop for securing apron in place

PR906



PR664

PR665



85° Wash  
Brandable

# Press Stud Fastening Jackets

**PR664 Short Sleeve Studded Chef's Jacket** ■ Mandarin collar, Ten press-stud fastening, Wrap over style ■ 65% Polyester, 35% Cotton, 195gsm ■ Sizes: **XS/30"** – **3XL/54"** ■ 2 colours

**PR665 Long Sleeve Studded Chef's Jacket** ■ Mandarin collar, Ten press-stud fastening, Wrap over style ■ 65% Polyester, 35% Cotton, 195gsm ■ Sizes: **XS/30"** – **3XL/54"** ■ 2 colours

**PR660 Denim Studded Chef's Jacket** ■ Cotton rich chef's jacket, Ten press-stud fastening, Wrap over style ■ 60% Cotton, 40% Polyester, 230gsm ■ Sizes: **XS/30"** – **3XL/54"** ■ 2 colours



PR660

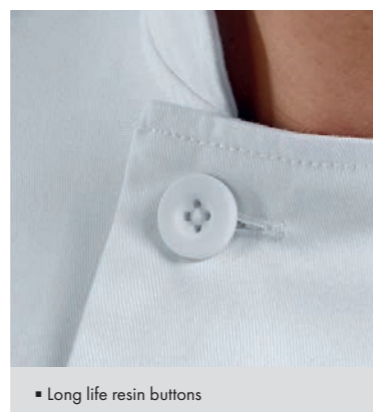
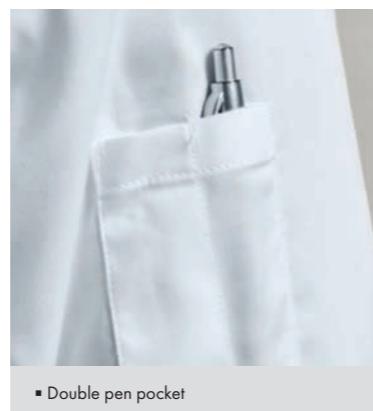
60° Wash  
Cotton Rich  
Brandable



# 'Essential' Chef's Jackets

**PR900 'Essential' Short Sleeve Chef's Jacket** ▪ Five button wrap over fastening, Long life resin buttons, Mandarin collar ▪ 65% Polyester, 35% Cotton, 170gsm ▪ Sizes: **XS/30"** – **4XL/58"** ▪ 2 colours

**PR901 'Essential' Long Sleeve Chef's Jacket** ▪ Five button wrap over fastening, Long life resin buttons, Double pen pocket on left sleeve, Mandarin collar ▪ 65% Polyester, 35% Cotton, 170gsm ▪ Sizes: **XS/30"** – **4XL/58"** ▪ 2 colours



85° Wash

Brandable







PR656

PR657

# Classic Chef's Jackets

**PR656 Short Sleeve Chef's Jacket** ▪ Ten button hole wrap over fastening, Double pen pocket on left sleeve, Mandarin collar ▪ 65% Polyester, 35% Cotton, 195gsm ▪ Sizes: **XS/30"** – **4XL/58"** ▪ 3 colours

**PR657 Long Sleeve Chef's Jacket** ▪ Ten button hole wrap over fastening, Mandarin collar ▪ 65% Polyester, 35% Cotton, 195gsm ▪ Sizes: **XS/30"** – **4XL/58"** ▪ 3 colours



85° Wash

Brandable



# Coolchecker® Chef's Jackets

**PR902** Coolchecker® Short Sleeve Chef's Jacket

**PR903** Coolchecker® Long Sleeve Chef's Jacket

Coolchecker® fabric mesh back panel for wicking and breathability, Double pen pocket on left sleeve, Self-fabric ten button fastening ■ 65% Polyester, 35% Cotton, 170gsm ■ Sizes: **XS/30"** – **2XL/50"** ■ 2 colours

60° Wash

Brandable



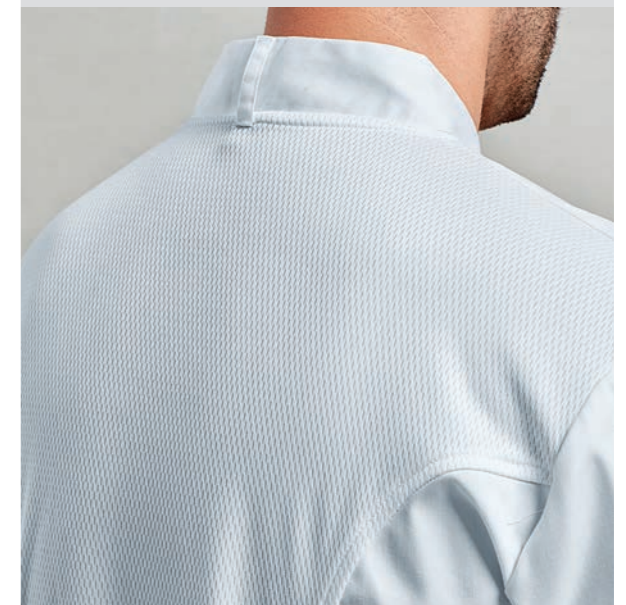
PR902

PR903

■ Double pen pocket on left sleeve



■ Coolchecker® fabric mesh back panel for wicking and breathability





PR670

PR671

- Ten button hole wrap over fastening
- Double pen pocket on left sleeve

## Women's Styles

**PR670 Women's Short Sleeve Chef's Jacket** ▪ Ten button hole wrap over fastening, Double pen pocket on left sleeve, Back panels for a more fitted style  
 ▪ 65% Polyester, 35% Cotton, 195gsm ▪ Sizes: **XS/8** – **2XL/18** ▪ 1 colour

**PR671 Women's Long Sleeve Chef's Jacket** ▪ Ten button hole wrap over fastening, Double pen pocket on left sleeve, Back panels for a more fitted style ▪  
 65% Polyester, 35% Cotton, 195gsm ▪ Sizes: **XS/8** – **2XL/18** ▪ 1 colour

85° Wash

Brandable



White

White

## Long Sleeve 'Cuisine' Chef's Jacket

**PR661 Long Sleeve 'Cuisine' Chef's Jacket** ▪ Mandarin collar, Comes with Black removable studs (other colours available, see page 151), Ten hole wrap fastening  
 ▪ 65% Polyester, 35% Cotton, 195gsm ▪ Sizes: **XS/30"** – **4XL/58"** ▪ 2 colours

85° Wash

Brandable



White

Black



PR661



## Chef's T-Shirt

**PR649 Chef's Coolchecker® T-Shirt** ▪ Crew neck styling, Coolchecker® fabric back panel for wicking and breathability, Underarm vent holes, Double pen pocket on left sleeve ▪ 100% Polyester, 135gsm ▪ Sizes: **XS/30"** – **3XL/54"** ▪ 2 colours

40° Wash

Modern Fit

Brandable



White

Black



PR649



- Underarm vent holes



# Chef's Accessories



PR653

## PR653 Chef's Skull Cap

▪ Flat top, Elasticated fit,  
One size fits all ▪ 65% Polyester,  
35% Cotton, 195gsm. Denim: 60%  
Cotton, 40% Polyester, 230gsm ▪  
9 colours

- 85° Wash
- Cotton Rich†
- Brandable



PR648

**PR648 Turn Up Chef's Hat** ▪ Turn up double edge band, Five eyelets for ventilation, Four sizes available ▪ 65% Polyester, 35% Cotton, 195gsm ▪ Sizes: **S** 54cm, **M** 57cm, **L** 60cm, **XL** 63cm ▪ 2 colours

Brandable



**PR658 Chef's Zandana** ▪ Two ties at the back, Elasticated fit, Neck flap ▪ 65% Polyester, 35% Cotton, 195gsm ▪ 2 colours

Brandable



PR658

**PR110 Striped Bib Apron** ▪ Butcher's style apron, 90cm self-fabric ties and neck band, Width 72cm, length 101cm ▪ 100% Cotton, 240gsm. Black/Grey: 65% Polyester, 35% Cotton, 195gsm ▪ 3 colours

- 85° Wash
- 100% Cotton†
- Brandable



PR110



PR652

**PR652 Chef's Jacket Studs** ▪ Removable studs, For use with PR661 Cuisine Chef's Jacket (pg 149), Sold in bags of 12 ▪ Durable plastic, Wipe clean ▪ 3 colours



# Chef's Trousers



NEW

**PR554 Chef's 'Select' Slim Leg Trouser** ■ Fitted style on lower leg, Patch pocket on right leg, Elasticated waist with draw cord and zip fly fastening ■ 65% Polyester, 35% Cotton, 195gsm ■ Sizes: **XS/28" – 2XL/44"** ■ 1 colour

85° Wash Brandable



OEKO TEX STANDARD 100 11-55731 Shirley

**PR552 Pull-On Chef's Trouser** ■ Elasticated waist, Zip fly, 30.5"/77cm inside leg ■ 65% Polyester, 35% Cotton, 195gsm ■ Sizes: **XS/28" – 2XL/44"** ■ 2 colours

85° Wash Brandable



OEKO TEX STANDARD 100 11-55731 Shirley

**PR553 'Essential' Chef's Trouser** ■ Elasticated waist, Swing pockets, 30.5"/77cm inside leg ■ 65% Polyester, 35% Cotton, 195gsm ■ Sizes: **XS/28" – 4XL/48"** ■ 2 colours

85° Wash Brandable



OEKO TEX STANDARD 100 11-55731 Shirley

\*only available in Black

**PR555 'Essential' Chef's Cargo Pocket Trousers** ■ Two mobile friendly cargo pockets, Elasticated waistband, Draw cord, 30.5"/77cm inside leg ■ 65% Polyester, 35% Cotton, 195gsm ■ Sizes: **XS/28" – 3XL/46"** ■ 1 colour

60° Wash Easy Care Brandable



■ Two cargo pockets

OEKO TEX STANDARD 100 11-55731 Shirley

**PR556 Chef's 'Artisan' Jogger Bottoms** ■ Cuffed ankle, Elasticated waistband, draw cord and belt loops, Soft and stretchy fabric, 30.5"/77cm inside leg ■ 87% Cotton, 12% Polyester, 1% Elastane, 230gsm ■ Sizes: **XS/28" – 2XL/44"** ■ 2 colours

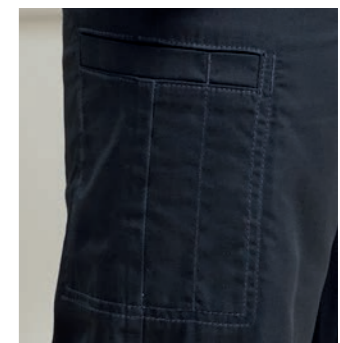
40° Wash Cotton Rich Brandable



OEKO TEX STANDARD 100 11-55731 Shirley

**PR557 Chef's Recycled Cargo Trouser** ■ Made with recycled polyester, Tapered lower leg with optional turn-up hems, Elasticated waistband, drawcord and mock fly, 30.5"/77cm inside leg ■ 65% Recycled Polyester, 35% Cotton, 170gsm ■ Sizes: **S/32-34" – 3XL/44-46"** ■ 1 colour

60° Wash Brandable



■ Single cargo pocket

RECYCLED POLYESTER Global Recycled Standard

## LOOK AND FEEL LIKE A PROFESSIONAL

Nowhere are looks more important than in the beauty industry. Which is why we've gone out of our way to create a range of elegant tunics that fit and flatter - whatever your shape. You'll love the little design details like zip fastenings, sparkly buttons, and flashes of bright colour. All designed into a classic range of tunics that are available in lots of colourful shades, you'll be spoilt for choice.



PR683

## Blossom

### PR683 Asymmetric Button Tunic

Flattering feminine fit with bust and back darts, Mandarin collar, Concealed zip through fastening and press stud ■ 100% Polyester, 185gsm ■ Sizes: **2XS/6** - **5XL/24** ■ 7 colours

40° Wash   Brandable





PR686



PR691



PR682

# Orchid

## PR682 Beauty & Spa Tunic

Flattering feminine fit with bust and back darts, Mandarin collar, Eight 'bar' button fastening

100% Polyester, 185gsm

Sizes: **2XS/6** – **5XL/24** ■ 8 colours

40° Wash    Brandable



Styled with PR536 Women's Straight Leg Trousers. See page 62



# Camellia

## PR686 Feature Zip Tunic

Flattering feminine fit with bust and back darts, Cross over neckline, Pull-on style with front feature zip

100% Polyester, 185gsm

Sizes: **2XS/6** – **5XL/24** ■ 1 colour



Black & Black

40° Wash  
Brandable

# Ivy

## PR691 Contrast Neck Tunic

Flattering feminine fit with bust and back darts, Crossover neckline with contrast coloured trim, Pull-on style with back zip fastening

100% Polyester, 185gsm

Sizes: **2XS/6** – **5XL/24** ■ 1 colour



Turquoise & Black

40° Wash  
Brandable



## Bib Apron

**PR115 Waterproof Bib Apron** ■ Adjustable buckle on neckband, Waterproof and bleach resistant, 90cm self fabric ties ■ 100% Polyester with Polyurethane coating, 110gsm ■ 8 colours

60° Wash    Brandable



## Mika

**PR681 Feature Button Tunic** ■ Flattering feminine fit with bust and back darts, Four sparkly feature buttons embellished on the trim, Pull-on style with back zip fastening ■ 100% Polyester, 185gsm ■ Sizes: **2XS/6 – 5XL/24** ■ 1 colour



40° Wash    Brandable

|                 |               |
|-----------------|---------------|
| Cornflower      | Mushroom      |
| Royal           | Latte         |
| Marine Blue     | Khaki         |
| Navy            | Natural       |
| Indigo Denim    | Camel         |
| Blue Denim      | Mustard       |
| Cyan            | Sunflower     |
| Light Blue      | Yellow        |
| Peacock         | Lemon         |
| Mid Blue        | Lime          |
| Sapphire        | Oasis Green   |
| Lilac           | Olive         |
| Lavender        | Moss Green    |
| Purple          | Aqua          |
| Rich Violet     | Duck Egg Blue |
| Aubergine       | Turquoise     |
| Fuchsia         | Teal          |
| Magenta         | Emerald       |
| Pink            | Kelly         |
| Rose            | Pistachio     |
| Hot Pink        | Apple         |
| Raspberry Crush | Bottle        |
| Burgundy        | Sage          |
| Red             | *White        |
| Salsa           | Black Denim   |
| Strawberry Red  | Grey Denim    |
| Orange          | Silver        |
| Terracotta      | Steel         |
| Chestnut        | Charcoal      |
| Brown           | Dark Grey     |
| Mocha           | *Black        |



**62**  
COLOURS

## 'Colours Collection'

**PR150 'Colours Collection' Bib Apron** ■ Adjustable buckle on neckband, 90cm self-fabric ties, Two sizes available ■ 65% Polyester, 35% Cotton, 195gsm. Denim: 70% Cotton, 30% Polyester, 265gsm ■ Size: 86cm x 72cm

\*Extra large size: 102cm x 91cm (Black and White only)



85° Wash  
Brandable



**PR116 Waterproof Salon Gown** ▪ Suitable for salons and barbers, 145cm long by 123cm wide, Waterproof and bleach resistant, Adjustable tear release fastening at the back ▪ 100% Polyester with Polyurethane coating, 110gsm ▪ 2 colours



60° Wash    Brandable

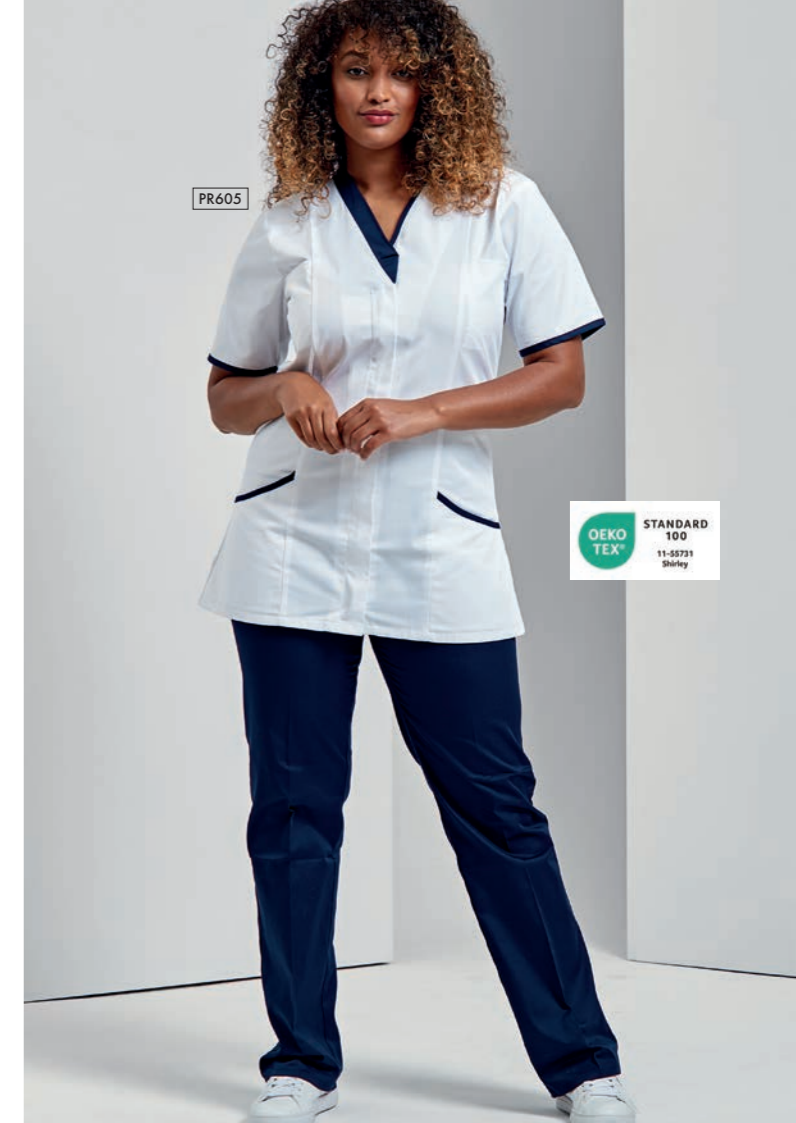


## Healthcare Uniforms

**PR605 'Daisy' Healthcare Tunic** ▪ V-neck styling, Concealed zip fastening with press stud, Two curved front pockets, Contrast trim on neckline, sleeves and pockets ▪ 65% Polyester, 35% Cotton, 195gsm ▪ Sizes: **XS/8** – **5XL/24** ▪ 1 colour



85° Wash    Brandable



## Waterproof, bleach resistant salon gowns

**PR117 Long Sleeve Waterproof Salon Gown** ▪ Waterproof and bleach resistant for use in salons and barbers, Elasticated cuffs, Adjustable tear release fastening ▪ 100% Polyester with Polyurethane coating, 110gsm ▪ 1 colour



60° Wash  
Brandable



**PR604 'Vitality' Healthcare Tunic** ▪ Soft collar styling, Concealed zip fastening and press stud, Two slanted front pockets, Contrast trim on neckline, sleeves and pockets ▪ 65% Polyester, 35% Cotton, 195gsm ▪ Sizes: **XS/8** – **5XL/24** ▪ 2 colours



85° Wash    Brandable



# SAY HELLO

TO A NEW GENERATION OF SCRUBS



The workplace is changing. Forget cold and clinical. Health and beauty is a dynamic, fluid and amazingly technical industry and we think the uniforms you wear should be too. So, we've put our heart and soul into creating the perfect range of uniforms designed for today's health and beauty professionals. And we know you're going to love the results.

Think activewear meets professional uniform. Technical fabrics engineered with super 4-way stretch. Tunics and pants designed for comfort and compliments. Breathable base layers that feel like a second skin. All in a range of team colours that are anything but dull, so you can make light work of the toughest days.

Because when you care for people 24/7, you need a uniform that takes care of you.

Models wear **NN200**, **NN300**, **NN500**, **NN600** and **NN610**



**PHYSIOTHERAPY • PHARMACY • CARE HOMES • DENTISTRY • VETERINARY • MEDICAL  
BEAUTY SALON & SPA • COSMETICS • AESTHETICS • CHILDCARE • HOUSEKEEPING**

# 'Invincible' Women's Onna-Stretch Tunic

**NN310** 'Invincible' Women's Onna-Stretch Tunic ■ V-neck style with two front pockets, Breathable 4-way stretch for easy movement and all day comfort, Durable crease resistant and easycare, Modern fit with back darts and side vents ■ 42% Polyester, 33% Recycled Polyester, 19% Viscose, 6% Elastane, 210gsm ■ Sizes: XS - 3XL ■ 6 colours

40° Wash



NN310



4-WAY STRETCH



BREATHABLE



RECYCLED POLYESTER



EASY-CARE



BRANDABLE

onna  
BY PREMIER



4-WAY STRETCH



BREATHABLE



RECYCLED POLYESTER



EASY-CARE



BRANDABLE

NN300



# 'Limitless' Women's Onna-Stretch Tunic

40° Wash



**NN300** 'Limitless' Women's Onna-Stretch Tunic ■ V-neck style with left chest pocket and combined pen pocket, Breathable 4-way stretch for easy movement and all day comfort, Durable crease resistant and easycare, Modern fit with back darts and side vents ■ 42% Polyester, 33% Recycled Polyester, 19% Viscose, 6% Elastane, 210gsm ■ Sizes: XS - 3XL ■ 6 colours



4-WAY STRETCH



BREATHABLE



RECYCLED POLYESTER



EASY-CARE



BRANDABLE

NN600

## 'Relentless' Women's Onna-Stretch Cargo Pants

**NN600** 'Relentless' Women's Onna-Stretch Cargo Pants ■ Breathable 4-way stretch for easy movement and all-day comfort, Durable, crease resistant and easycare, Part elasticated waistband with drawcord and mock fly, Multiple mobile friendly coin and zip pockets, Hem vents for easy movement, Leg length 29"/ 74cm ■ 42% Polyester, 33% Recycled Polyester, 19% Viscose, 6% Elastane, 210gsm ■ Sizes: XS - 3XL ■ 6 colours



Contains 33% RCS Certified Recycled Post Consumer Polyester Certified by Control Union CB-CUC-1119398

40° Wash

## 'Energized' Women's Onna-Stretch Jogger Pants

**NN610** 'Energized' Women's Onna-Stretch Jogger Pants ■ Breathable 4-way stretch for easy movement and all-day comfort, Durable, crease resistant and easycare, Elasticated waistband with drawcord and mock fly, Multiple mobile friendly coin and zip pockets, Ribbed knit cuffed ankles, Leg length 28.5"/ 72.5cm ■ 42% Polyester, 33% Recycled Polyester, 19% Viscose, 6% Elastane, 210gsm ■ Sizes: XS - 3XL ■ 6 colours



Contains 33% RCS Certified Recycled Post Consumer Polyester Certified by Control Union CB-CUC-1119398

40° Wash



4-WAY STRETCH



BREATHABLE



RECYCLED POLYESTER



EASY-CARE



BRANDABLE

NN610

# 'Relentless' Men's Onna-Stretch Cargo Pants

**NN500** 'Relentless' Men's Onna-Stretch Cargo Pants ■ Breathable 4-way stretch for easy movement and all day comfort, Durable crease resistant and easycare, Buttoned waistband, Drawcord and zip fly, Multiple mobile friendly coin and zip pockets, Hem vents for easy movement, Leg length 29.5"/ 75cm ■ 42% Polyester, 33% Recycled Polyester, 19% Viscose, 6% Elastane, 210gsm ■ Sizes: S - 3XL ■ 5 colours



40° Wash



4-WAY STRETCH



BREATHABLE



RECYCLED POLYESTER



EASY-CARE



BRANDABLE

NN500



4-WAY STRETCH



BREATHABLE



RECYCLED POLYESTER



EASY-CARE



BRANDABLE

onna  
BY PREMIER



NN200



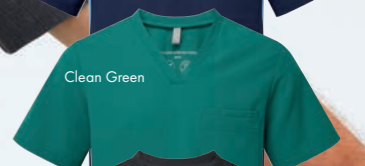
Dynamo Grey



Ceil Blue



Action Navy



Clean Green



Exact Black

# 'Limitless' Men's Onna-Stretch Tunic

40° Wash

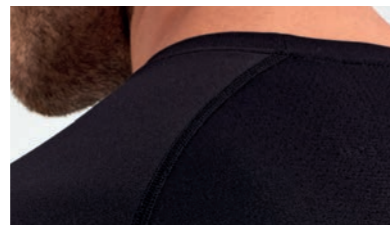


**NN200** 'Limitless' Men's Onna-Stretch Tunic ■ V-neck style with 3 in 1 chest pocket and combined pen pocket, Breathable 4-way stretch for easy movement and all day comfort, Durable crease resistant and easycare, Modern fit with back darts and side vents ■ 42% Polyester, 33% Recycled Polyester, 19% Viscose, 6% Elastane, 210gsm ■ Sizes: S - 3XL ■ 5 colours

# 'Unstoppable' Fresh Underscrub Base Layer

**NN270 'Unstoppable' Men's Fresh Underscrub Base Layer** ■ Peppermint extract gives a natural deodorising finish without a mint scent, Seamless body with unique jacquard pattern, Breathable 4-way stretch for easy movement and all day comfort, Durable crease resistant and easycare ■ 50% Recycled Nylon, 50% Nylon, 170gsm ■ Sizes: S - 2XL ■ 2 colours<sup>1</sup>

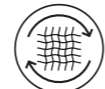
**NN370 'Unstoppable' Women's Fresh Underscrub Base Layer** ■ Peppermint extract gives a natural deodorising finish without a mint scent, Seamless body with unique jacquard pattern, Breathable 4-way stretch for easy movement and all day comfort, Durable crease resistant and easycare ■ 50% Recycled Nylon, 50% Nylon, 170gsm. \*50% Recycled Nylon, 30% Nylon, 20% Polyester, 170gsm ■ Sizes: XS - XL ■ 4 colours



4-WAY STRETCH



BREATHABLE



RECYCLED  
NYLON



DEODORISING  
MINT FINISH



BRANDABLE



40° Wash



# Sizing

|              |             |
|--------------|-------------|
| Tailored Fit | Slim Fit    |
| Modern Fit   | Classic Fit |



## Women's - Shirts / Polos / Tees / Knitwear / Chef's Jackets / Beauty Tunics & Outerwear

| Call size      | 2XS | XS | S  | M  | L  | XL  | 2XL | 3XL | 4XL | 5XL | 6XL | 7XL | 8XL |
|----------------|-----|----|----|----|----|-----|-----|-----|-----|-----|-----|-----|-----|
| Size           | 6   | 8  | 10 | 12 | 14 | 16  | 18  | 20  | 22  | 24  | 26  | 28  | 30  |
| Bust to fit "  | 31  | 33 | 35 | 37 | 39 | 41  | 43  | 45  | 47  | 49  | 51  | 53  | 55  |
| Bust to fit cm | 79  | 84 | 89 | 94 | 99 | 104 | 109 | 114 | 119 | 124 | 129 | 134 | 139 |

## Women's Waistcoats - PR621, PR623 & PR626

| Call size      | 2XS | XS | S  | M  | L   | XL  | 2XL |
|----------------|-----|----|----|----|-----|-----|-----|
| Size           | 6   | 8  | 10 | 12 | 14  | 16  | 18  |
| Bust to fit "  | 27  | 29 | 32 | 34 | 37  | 40  | 44  |
| Bust to fit cm | 72  | 80 | 88 | 96 | 104 | 112 | 120 |

## Women's Trousers, Chinos & Shorts - PR536, PR570 & PR572

| Call size       | XS | S  | M  | L  | XL | 2XL | 3XL | 4XL | 5XL |
|-----------------|----|----|----|----|----|-----|-----|-----|-----|
| Size            | 8  | 10 | 12 | 14 | 16 | 18  | 20  | 22  | 24  |
| Waist to fit "  | 24 | 26 | 28 | 30 | 32 | 34  | 36  | 38  | 40  |
| Waist to fit cm | 59 | 64 | 69 | 74 | 79 | 84  | 89  | 94  | 99  |

## Men's Collared Shirts - PR200, PR202, PR204, PR207, PR209, PR210, PR212, PR234 & PR236

| Call size       | S   | S/M | M   | M/L | L   | L/XL | XL  | XL/2XL | 2XL | 2XL/3XL | 3XL | 4XL | 5XL | 6XL |
|-----------------|-----|-----|-----|-----|-----|------|-----|--------|-----|---------|-----|-----|-----|-----|
| Collar "        | 14½ | 15  | 15½ | 16  | 16½ | 17   | 17½ | 18     | 18½ | 19      | 20  | 21  | 22  | 23  |
| Collar cm       | 37  | 38  | 39½ | 41  | 42  | 43   | 44½ | 46     | 47  | 48      | 50  | 52  | 54  | 56  |
| Chest to fit "  | 34  | 36  | 38  | 40  | 42  | 44   | 46  | 48     | 50  | 52      | 54  | 58  | 62  | 66  |
| Chest to fit cm | 87  | 92  | 96  | 102 | 107 | 111  | 117 | 122    | 127 | 132     | 137 | 147 | 157 | 167 |

## Men's Soft Collared Shirts, Tees, Chef's Jackets, Knitwear & Artisan Fleece - PR218, PR219, PR220, PR221, PR222, PR238, PR244, PR246, PR247, PR250, PR252, PR254, PR258, PR649, PR803 & PR823

| Call size      | 2XS | XS | S  | M  | L   | XL  | 2XL | 3XL | 4XL | 5XL |
|----------------|-----|----|----|----|-----|-----|-----|-----|-----|-----|
| Chest to fit " | 28  | 30 | 34 | 38 | 42  | 46  | 50  | 54  | 58  | 62  |
| Chest to fit " | 74  | 77 | 87 | 96 | 107 | 117 | 126 | 136 | 146 | 156 |

## Men's Waistcoats - PR620, PR622 & PR625

| Call size       | 2XS | XS | S  | M  | L   | XL  | 2XL |
|-----------------|-----|----|----|----|-----|-----|-----|
| Chest to fit "  | 30  | 32 | 36 | 40 | 44  | 46  | 52  |
| Chest to fit cm | 66  | 76 | 86 | 96 | 106 | 116 | 126 |

## Studded Polo, Coolchecker Plus® Polo, Spun Dyed Polo, Essential Polos, Zip-Through Sweat, Softshells & Recyclights - PR612, PR630, PR631, PR995, PR997, PR808, PR810, PR811, PR814 & PR817.

| Call size       | XS | S  | M  | L   | XL  | 2XL | 3XL | 4XL | 5XL | 6XL |
|-----------------|----|----|----|-----|-----|-----|-----|-----|-----|-----|
| Chest to fit "  | 33 | 35 | 38 | 41  | 44  | 47  | 50  | 53  | 56  | 59  |
| Chest to fit cm | 83 | 89 | 96 | 104 | 112 | 119 | 122 | 134 | 142 | 150 |

## Men's Coolchecker Polo Shirts - PR615, PR617 & PR618

| Call size       | XS | S  | M  | L  | XL  | 2XL | 3XL | 4XL | 5XL |
|-----------------|----|----|----|----|-----|-----|-----|-----|-----|
| Chest to fit "  | 33 | 35 | 37 | 39 | 41  | 44  | 46  | 48  | 51  |
| Chest to fit cm | 83 | 89 | 94 | 99 | 104 | 112 | 116 | 122 | 130 |

## Studded Polo Shirt - PR610

| Call size       | S  | M   | L   | XL  | 2XL | 3XL |
|-----------------|----|-----|-----|-----|-----|-----|
| Chest to fit "  | 34 | 38  | 42  | 46  | 50  | 52  |
| Chest to fit cm | 92 | 100 | 108 | 116 | 124 | 132 |

## Men's Trousers, Chinos & Shorts - PR560, PR562 & PR564

| Call size       | XS | S  | M  | L  | XL | 2XL | 3XL | 4XL |
|-----------------|----|----|----|----|----|-----|-----|-----|
| Waist to fit "  | 30 | 32 | 34 | 36 | 38 | 40  | 42  | 44  |
| Waist to fit cm | 76 | 80 | 86 | 92 | 96 | 100 | 106 | 110 |

## Unisex Chef's Trousers - PR552, PR553, PR554, PR555, PR556 & PR557

| Call size       | XS    | S     | M     | L     | XL     | 2XL     | 3XL     | 4XL     |
|-----------------|-------|-------|-------|-------|--------|---------|---------|---------|
| Waist to fit "  | 28-30 | 32-34 | 34-36 | 36-38 | 38-40  | 42-44   | 44-46   | 46-48   |
| Waist to fit cm | 71-76 | 81-86 | 86-91 | 91-96 | 96-101 | 106-111 | 111-116 | 116-126 |

## Onna by Premier

### Women's Tunics, Underscrub & Trousers

NN300, NN310, NN370, NN600, NN610

| Call size       | XS    | S     | M     | L      | XL      | 2XL     | 3XL     |
|-----------------|-------|-------|-------|--------|---------|---------|---------|
| Chest to fit "  | 33-34 | 35-36 | 37-38 | 39-40  | 41-43   | 44-46   | 47-49   |
| Chest to fit cm | 84-86 | 89-91 | 94-96 | 99-101 | 104-109 | 112-117 | 121-124 |
| Waist to fit "  | 25-26 | 27-28 | 29-31 | 32-34  | 35-37   | 38-40   | 41-43   |
| Waist to fit cm | 63-67 | 68-72 | 74-79 | 81-86  | 89-94   | 96-101  | 105-109 |

### Men's Tunics, Underscrub & Trousers - NN200, NN270 & NN500

| Call size       | S     | M       | L       | XL      | 2XL     | 3XL     |
|-----------------|-------|---------|---------|---------|---------|---------|
| Chest to fit "  | 37-39 | 40-42   | 43-44   | 45-47   | 48-49   | 50-53   |
| Chest to fit cm | 94-99 | 101-106 | 108-113 | 115-119 | 121-125 | 127-135 |
| Waist to fit "  | 31-33 | 34-35   | 36-38   | 39-40   | 41-42   | 43-44   |
| Waist to fit cm | 79-84 | 86-89   | 91-96   | 99-101  | 104-107 | 110-114 |



# Index

## Shirts & Tees

|       |   |    |
|-------|---|----|
| PR200 | Men's Long Sleeve Poplin Shirt                    | 30 |
| PR202 | Men's Short Sleeve Poplin Shirt                   | 30 |
| PR204 | Men's Long Sleeve Fitted Poplin Shirt             | 33 |
| PR207 | Men's Poplin Supreme Long Sleeve Shirt            | 36 |
| PR209 | Men's Poplin Supreme Short Sleeve Shirt           | 36 |
| PR210 | Men's Long Sleeve Security Shirt                  | 38 |
| PR212 | Men's Short Sleeve Security Shirt                 | 39 |
| PR218 | Men's Long-John Roll Sleeve Tee                   | 81 |
| PR219 | Men's 'Comis' Cotton Rich Tee                     | 82 |
| PR220 | Men's Long Sleeve Gingham Cotton Microcheck Shirt | 47 |



PR904

PR557

|       |   |    |
|-------|---|----|
| PR221 | Men's Short Sleeve Gingham Cotton Microcheck Shirt        | 47 |
| PR222 | Men's Jean Stitch Denim Shirt                             | 86 |
| PR234 | Men's Long Sleeve Signature Oxford Shirt                  | 42 |
| PR236 | Men's Short Sleeve Signature Oxford Shirt                 | 43 |
| PR238 | Men's Cotton Rich Oxford Stripes Shirt                    | 41 |
| PR244 | Men's Stretch Fit Cotton Poplin Long Sleeve Shirt         | 34 |
| PR246 | Men's Stretch Fit Cotton Poplin Short Sleeve Shirt        | 35 |
| PR247 | Men's Cotton Chambray Shirt - Fairtrade & Organic Cert.   | 85 |
| PR250 | 'Mulligan' Check - Men's Long Sleeve Cotton Shirt         | 88 |
| PR252 | 'Maxton' Check - Men's Long Sleeve Shirt                  | 44 |
| PR254 | 'Ginmill' Check - Men's Long Sleeve Cotton Shirt          | 89 |
| PR258 | Men's Banded Collar 'Grandad' Long Sleeve Shirt           | 32 |
| PR300 | Women's Long Sleeve Poplin Blouse                         | 30 |
| PR302 | Women's Short Sleeve Poplin Blouse                        | 30 |
| PR305 | Women's Poplin 3/4 Sleeve Blouse                          | 33 |
| PR307 | Women's Poplin Supreme Long Sleeve Shirt                  | 36 |
| PR309 | Women's Poplin Supreme Short Sleeve Shirt                 | 36 |
| PR310 | Women's Long Sleeve Security Shirt                        | 38 |
| PR312 | Women's Short Sleeve Security Shirt                       | 39 |
| PR318 | Women's Long John Roll Sleeve Tee                         | 81 |
| PR319 | Women's 'Comis' Cotton Rich Tee                           | 82 |
| PR320 | Women's Long Sleeve Gingham Microcheck Shirt              | 47 |
| PR321 | Women's Short Sleeve Gingham Microcheck Shirt             | 47 |
| PR322 | Women's Jean Stitch Denim Shirt                           | 86 |
| PR334 | Women's Long Sleeve Signature Oxford Blouse               | 42 |
| PR336 | Women's Short Sleeve Signature Oxford Blouse              | 43 |
| PR338 | Women's Cotton Rich Oxford Stripes Shirt                  | 41 |
| PR344 | Women's Stretch-Fit Cotton Poplin Long Sleeve Shirt       | 34 |
| PR346 | Women's Stretch-Fit Cotton Poplin Short Sleeve Shirt      | 35 |
| PR347 | Women's Cotton Chambray Shirt - Fairtrade & Organic Cert. | 85 |
| PR350 | 'Mulligan' Check-Women's Long Sleeve Cotton Shirt         | 88 |
| PR352 | 'Maxton' Check - Women's Long Sleeve Shirt                | 44 |
| PR354 | 'Ginmill' Check-Women's Long Sleeve Cotton Shirt          | 89 |
| PR358 | Women's Banded Collar 'Grandad' Shirt                     | 32 |

## Outerwear

|       |  |    |
|-------|--|----|
| PR803 | Men's 'Artisan' Fleece Gilet                               | 23 |
| PR804 | Women's 'Artisan' Fleece Gilet                             | 23 |
| PR808 | Men's Spun Dyed Recycled Zip-Through Sweat                 | 15 |
| PR809 | Women's Spun Dyed Recycled Zip-Through Sweat               | 15 |
| PR810 | Men's Windchecker® Printable & Recycled Softshell Jacket   | 12 |
| PR811 | Men's 'Recyclight' Padded Gilet                            | 19 |
| PR812 | Women's Windchecker® Printable & Recycled Softshell Jacket | 12 |
| PR814 | Men's Windchecker® Printable & Recycled Gilet              | 12 |
| PR815 | Women's 'Recyclight' Padded Gilet                          | 19 |
| PR816 | Women's Windchecker® Printable & Recycled Gilet            | 12 |
| PR817 | Men's 'Recyclight' Padded Jacket                           | 16 |
| PR819 | Women's 'Recyclight' Padded Jacket                         | 16 |
| PR823 | Men's 'Artisan' Fleece Jacket                              | 20 |
| PR824 | Women's 'Artisan' Fleece Jacket                            | 20 |
| PR830 | Men's 'Recyclight' Full Zip Micro Fleece                   | 24 |
| PR831 | Unisex 'Recyclight' ¼ Zip Micro Fleece                     | 27 |
| PR832 | Women's 'Recyclight' Full Zip Micro Fleece                 | 24 |

## Waistcoats

|       |                                   |    |
|-------|-----------------------------------|----|
| PR620 | Men's Hospitality Waistcoat       | 90 |
| PR621 | Women's Hospitality Waistcoat     | 90 |
| PR622 | Men's Lined Polyester Waistcoat   | 91 |
| PR623 | Women's Lined Polyester Waistcoat | 91 |
| PR625 | Men's Herringbone Waistcoat       | 90 |
| PR626 | Women's Herringbone Waistcoat     | 90 |

## Ties & Scarves

|       |  |    |
|-------|--|----|
| PR700 | Plain Work Tie                           | 39 |
| PR705 | Bow Tie                                  | 52 |
| PR710 | Clip-on Work Tie                         | 39 |
| PR715 | Epaulettes                               | 39 |
| PR730 | 'Colours Originals' Plain Business Scarf | 41 |
| PR740 | 'Colours Collection' Plain Chiffon Scarf | 48 |
| PR750 | 'Colours Collection' Satin Tie           | 49 |
| PR755 | 'Colours Collection' Satin Clip-on Tie   | 48 |
| PR765 | 'Colours Originals' Fashion Tie          | 41 |
| PR780 | Micro Waffle Tie                         | 51 |
| PR781 | Micro Dot Tie                            | 51 |

|       |   |    |
|-------|---|----|
| PR782 | Double Stripe Tie                       | 52 |
| PR783 | Waffle Stripe Tie                       | 51 |
| PR784 | Sports Stripe Tie                       | 52 |
| PR785 | 'Colours Originals' Fashion Clip-on Tie | 51 |
| PR787 | Puppy Tooth Tie                         | 51 |
| PR789 | Slim Knitted Tie                        | 52 |
| PR793 | Slim Tie                                | 52 |

## Trousers, Chino Jeans & Shorts

|       |                                  |    |
|-------|----------------------------------|----|
| PR536 | Women's Straight Leg Trousers    | 62 |
| PR560 | Men's Performance Chino Jeans    | 60 |
| PR562 | Men's Performance Chino Shorts   | 64 |
| PR564 | Men's Workwear Cargo Shorts      | 63 |
| PR570 | Women's Performance Chino Jeans  | 60 |
| PR572 | Women's Performance Chino Shorts | 64 |
| PR701 | Clip-on Trousers Braces          | 62 |

## Knitwear

|       |   |    |
|-------|---|----|
| PR400 | 'Essential' Acrylic Men's V-Neck Sweater    | 59 |
| PR402 | 'Essential' Acrylic Women's Cardigan        | 59 |
| PR692 | Men's Crew Neck Cotton Rich Knitted Sweater | 57 |
| PR694 | Men's Knitted V-Neck Sweater                | 55 |
| PR695 | Men's Quarter-Zip Knitted Sweater           | 56 |
| PR696 | Women's Knitted V-Neck Sweater              | 56 |
| PR697 | Women's Button-Through Knitted Cardigan     | 55 |
| PR698 | Women's Long Length Knitted Cardigan        | 56 |
| PR699 | Men's V-Neck Sleeveless Sweater             | 56 |

## Polo Shirts

|       |   |    |
|-------|---|----|
| PR610 | Studded Polo Shirt                              | 78 |
| PR612 | Coolchecker® Studded Polo Shirt                 | 77 |
| PR615 | Men's Coolchecker® Pique Polo Shirt             | 70 |
| PR616 | Women's Coolchecker® Pique Polo Shirt           | 70 |
| PR617 | Men's Long Sleeve Coolchecker® Pique Polo Shirt | 76 |
| PR618 | Men's Contrast Tipped Coolchecker® Polo Shirt   | 73 |
| PR619 | Women's Contrast Tipped Coolchecker® Polo       | 73 |
| PR630 | Men's Coolchecker® Plus Pique Polo              | 69 |
| PR631 | Men's Spun Dyed Recycled Polo Shirt             | 74 |
| PR632 | Women's Coolchecker® Plus Pique Polo            | 69 |
| PR633 | Women's Spun Dyed Recycled Polo Shirt           | 74 |
| PR995 | 'Essential' Unisex Short Sleeve Polo Shirt      | 79 |
| PR997 | 'Essential' Unisex Long Sleeve Polo Shirt       | 79 |

## Aprons

|       |   |     |
|-------|---|-----|
| PR102 | 100% Cotton Bib Apron   | 119 |
| PR105 | Zip Pocket Waist Apron  | 104 |
| PR110 | Striped Bib Apron   | 150 |
| PR112 | Cotton Bib Apron - Fairtrade Cert.                                | 122 |
| PR113 | Cotton Denim Bib Apron - Organic & Fairtrade Cert.                | 116 |
| PR114 | Mid Length Cotton Apron - Fairtrade Cert.                         | 122 |
| PR115 | Waterproof Bib Apron  | 130 |
| PR119 | Cross Back Interchangeable Apron Straps                           | 128 |
| PR120 | Recycled Polyester & Cotton Bib Apron - Organic & Fairtrade Cert. | 123 |
| PR121 | 'Barley' Contrast Stitch Bib Apron                                | 124 |
| PR122 | 'Regenerate' Bib Apron  | 117 |
| PR123 | 'Espresso' Bib Apron  | 129 |
| PR125 | Jean Stitch Denim Waist Apron                                     | 110 |
| PR126 | Jean Stitch Denim Bib Apron                                       | 110 |
| PR127 | 'Domain' Contrast Denim Bib Apron                                 | 113 |
| PR128 | 'Domain' Contrast Denim Waist Apron                               | 113 |
| PR129 | Cross Back 'Barista' Bib Apron                                    | 128 |
| PR130 | 'Calibre' Heavy Cotton Canvas Bib Apron                           | 126 |
| PR131 | 'Calibre' Heavy Cotton Canvas Waist Apron                         | 126 |
| PR132 | 'Chino' Bib Apron   | 118 |
| PR134 | 'District' Waxed Look Denim Bib Apron                             | 115 |
| PR135 | 'Division' Waxed Look Denim Waist Apron                           | 115 |
| PR136 | 'Division' Waxed Look Denim Bib Apron with Faux leather           | 115 |
| PR137 | 'Calibre' Heavy Cotton Canvas Pocket Apron                        | 126 |
| PR138 | 'Metro' Utility Hip Apron   | 118 |
| PR141 | 'Colours Collection' Mid-Length Apron with Pocket                 | 105 |
| PR144 | 'Annex' Oxford Bib Apron  | 125 |
| PR145 | Children's Waterproof Apron                                       | 130 |

|       |   |     |
|-------|---|-----|
| PR149 | Children's Bib Apron                          | 100 |
| PR150 | 'Colours Collection' Bib Apron                | 96  |
| PR151 | 'Colours Collection' Mid Length Apron         | 99  |
| PR154 | 'Colours Collection' Bib Apron with Pocket    | 99  |
| PR155 | 'Colours Collection' Three Pocket Apron       | 101 |
| PR158 | 'Colours Collection' Bar Apron with Pocket    | 101 |
| PR159 | 'Colours Collection' 2 in 1 Apron             | 100 |
| PR162 | 'Colours Collection' Contrast Bib Apron       | 104 |
| PR165 | 'Essential' Bib Apron                         | 106 |
| PR167 | Polyester Bib Apron                           | 107 |
| PR181 | 'Artisan's Choice' Double Pocket Canvas Apron | 120 |
| PR190 | 'Swap & Pop' Customisable Apron Body          | 103 |
| PR191 | 'Swap & Pop' Customisable Apron Strap         | 103 |
| PR996 | Antimicrobial Bib Apron                       | 107 |

## Tabards

|       |                              |     |
|-------|------------------------------|-----|
| PR171 | Pocket Tabard                | 133 |
| PR172 | Long Length Pocket Tabard    | 132 |
| PR174 | Waterproof Wrap Around Tunic | 131 |
| PR177 | 'Tulip' Wrap Around Tunic    | 131 |

## Chefswear

|       |  |     |
|-------|--|-----|
| PR552 | Chef's Pull-on Trousers                  | 152 |
| PR553 | 'Essential' Chef's Trousers              | 152 |
| PR554 | Chef's Slim Fit Trousers                 | 152 |
| PR555 | 'Essential' Chef's Cargo Pocket Trousers | 153 |
| PR556 | Artisan Chef's Jogging Trousers          | 153 |
| PR557 | Chef's Recycled Cargo Trousers           | 153 |
| PR648 | Turn-up Chef's Hat                       | 151 |
| PR649 | Coolchecker® Chef's T-shirt              | 149 |
| PR652 | Chef's Jacket Studs                      | 151 |
| PR653 | Chef's Skull Cap                         | 150 |
| PR656 | Short Sleeve Chef's Jacket               | 145 |
| PR657 | Long Sleeve Chef's Jacket                | 145 |
| PR658 | Chef's Zandana                           | 151 |
| PR660 | Chef's Denim Jacket                      | 141 |
| PR661 | Chef's Long Sleeve 'Cuisine' Jacket      | 149 |
| PR664 | Chef's Short Sleeve Stud Jacket          | 141 |
| PR665 | Chef's Long Sleeve Stud Jacket           | 141 |
| PR670 | Women's Short Sleeve Chef's Jacket       | 148 |
| PR671 | Women's Long Sleeve Chef's Jacket        | 148 |
| PR900 | 'Essential' Short Sleeve Chef's Jacket   | 142 |
| PR901 | 'Essential' Long Sleeve Chef's Jacket    | 142 |
| PR902 | Chef's Short Sleeve Coolchecker® Jacket  | 146 |
| PR903 | Chef's Long Sleeve Coolchecker® Jacket   | 146 |
| PR904 | Chef's Recycled Short Sleeve Shirt       | 136 |
| PR906 | Chef's Zip-Close Short Sleeve Jacket     | 139 |

## Beauty, Salonwear & Healthcare

|       |                                 |     |
|-------|---------------------------------|-----|
| PR115 | Waterproof Bib Apron            | 158 |
| PR116 | Waterproof Salon Gown           | 160 |
| PR117 | Long Sleeve Waterproof Gown     | 160 |
| PR536 | Women's Straight Leg Trousers   | 62  |
| PR604 | 'Vitality' Healthcare Tunic     | 161 |
| PR605 | 'Daisy' Healthcare Tunic        | 161 |
| PR681 | 'Mika' Beauty and Spa Tunic     | 158 |
| PR682 | 'Orchid' Beauty and Spa Tunic   | 157 |
| PR683 | 'Blossom' Beauty and Spa Tunic  | 155 |
| PR686 | 'Camellia' Beauty and Spa Tunic | 156 |
| PR691 | 'Ivy' Beauty and Spa Tunic      | 156 |

## Onna by Premier

|       |   |     |
|-------|---|-----|
| NN200 | Men's 'Limitless' Onna-Stretch Tunic              | 169 |
| NN270 | Men's 'Unstoppable' Fresh Underscrub Base Layer   | 170 |
| NN300 | Women's 'Limitless' Onna-Stretch Tunic            | 165 |
| NN310 | Women's 'Invincible' Onna-Stretch Tunic           | 164 |
| NN370 | Women's 'Unstoppable' Fresh Underscrub Base Layer | 170 |
| NN500 | Men's 'Relentless' Onna-Stretch Cargo Pants       | 168 |
| NN600 | Women's 'Relentless' Onna-Stretch Cargo Pants     | 166 |
| NN610 | Women's 'Energized' Onna-Stretch Jogger Pants     | 167 |





**BUSINESSWEAR**  
**HOSPITALITYWEAR**  
**OUTERWEAR**  
**CHEFSWEAR**  
**BEAUTY & SALON**  
**ACTIVE CARE WEAR**

