



SPRING | SUMMER 2022

GOLF APPAREL, FOOTWEAR
& ACCESSORIES



CONTENTS

- 15 - MEN'S APPAREL
- 22 - WOMEN'S APPAREL
- 29 - INCLUSIVE SIZING APPAREL
- 31 - JUNIOR APPAREL
- 35 - TEAMWEAR
- 37 - FOOTWEAR
- 53 - ACCESSORIES
- 64 - SIZE GUIDES

READY COLLECTION OF TECHNOLOGIES

HEAT.RDY

READY FOR THE HEAT

KEEP COOL

Our cooling technology keeps you feeling cool, dry and confident in the game.

COLD.RDY

READY FOR THE COLD

STAY WARM

Our insulation technology keeps you feeling warm and confident when it's cold outside.

RAIN.RDY

READY FOR THE RAIN

STAY DRY

Our waterproof technology keeps the wet out so you feel dry and confident when you play.

WIND.RDY

READY FOR THE WIND

GET SHELTERED

Our wind-resistant technology keeps the wind out so you feel protected and confident.

AEROREADY

READY FOR ANYTHING

FEEL READY

Our sweat-wicking technology keeps your skin dry and comfortable to keep you performing at your best.



PERFORMANCE GOLF PRODUCTS
MADE WITH RECYCLED MATERIALS

PRIMEBLUE

MADE WITH PARLEY OCEAN PLASTIC

MAKE A CHOICE THAT MAKES A DIFFERENCE TO OUR OCEANS

PRIMEGREEN

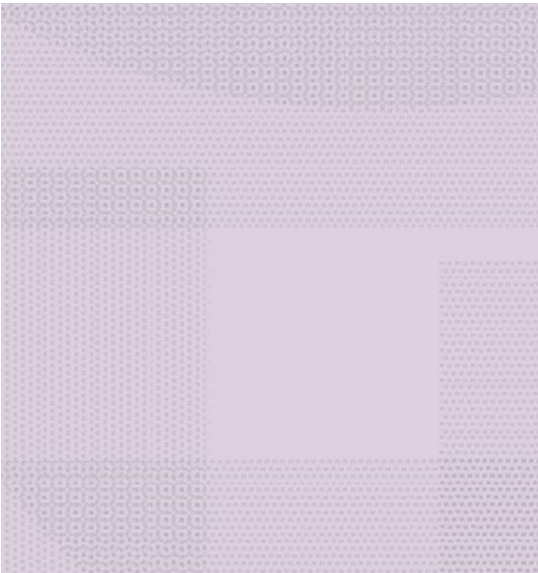
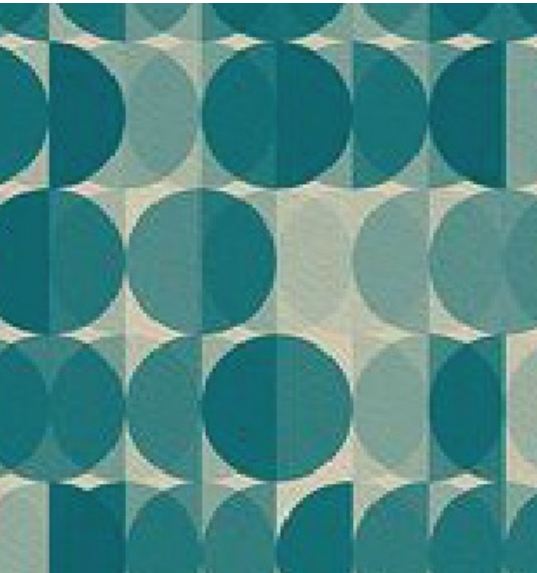
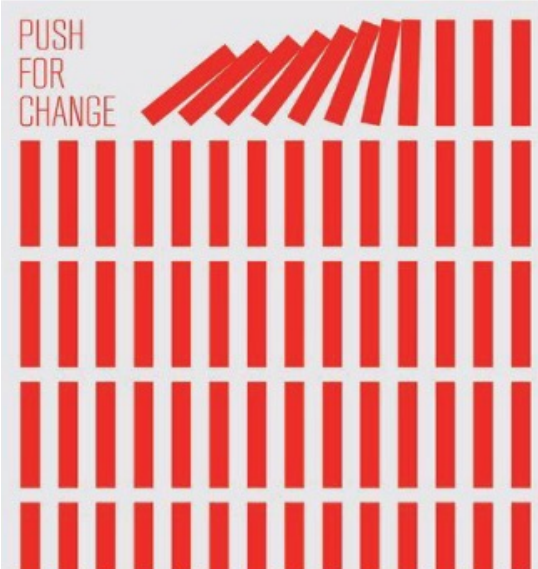
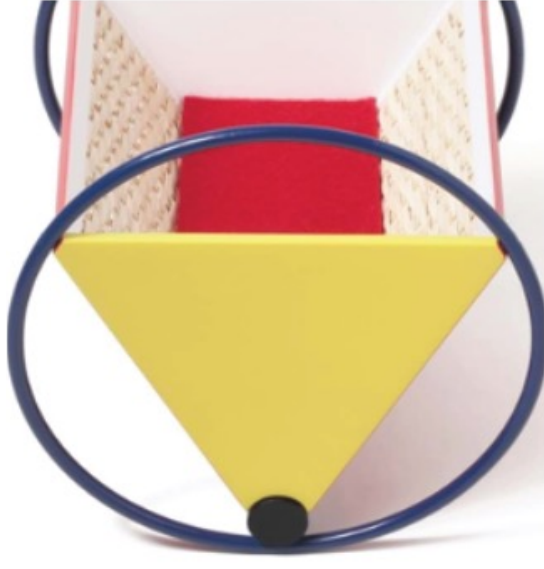
MADE WITH RECYCLED MATERIALS

MAKE A CHOICE THAT MAKES A DIFFERENCE TO OUR PLANET

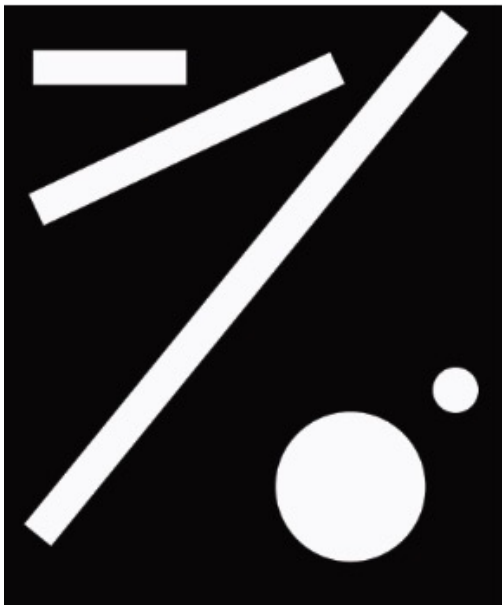




SPRING | SUMMER 2022 COLLECTION INSPIRATION - BUAHAUS

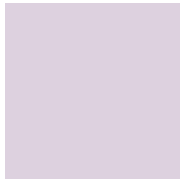


SPRING | SUMMER 2022 COLLECTION COLOUR INSPIRATION - JANUARY



TRANSEASONALITY ALMOST PINK PLAYED AGAINST BLACK AND WHITE WITH HITS OF BURGANDY AND DARKER PINK SOFTENS THE WAY WE LOOK AT SPORT IN THE FIRST DELIVERY.

LEAD



ALMOST PINK S22



LEGACY BURGUNDY

NEUTRALS



BLACK



WHITE



SEMI TURBO S22



SPORT PERFORMANCE COLORBLOCKED POLO HA3447



GRADIENT SLEEVELESS POLO HA3385
MODERN BERMUDA SHORT HA3410



ESSENTIALS SLUB HOODIE HA3397
MODERN BERMUDA SHORT HA3410

SPRING | SUMMER 2022 COLLECTION COLOUR INSPIRATION - MARCH



RECODE THE ICONS SATURATED BLUE GOING BACK TO OUR NAVY CREATES A DYNAMIC PALETTE AND DRIVES POWER IN THE SECOND DELIVERY.

LEAD



BLUE RUSH S22

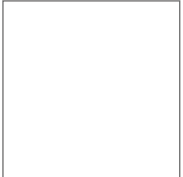


SEMI MINT RUSH

NEUTRALS



CREW NAVY S21



WHITE



TOP: MENS GO-TO CREWNECK PRIMEGREEN PULLOVER HG8835
BOTTOMS: MENS GO-TO COMMUTER PRIMEGREEN PANT HA6227



TOP: PRIMEKNIT POLO GL4639
BOTTOMS: WARPKNIT CARGO PANTS GM3494



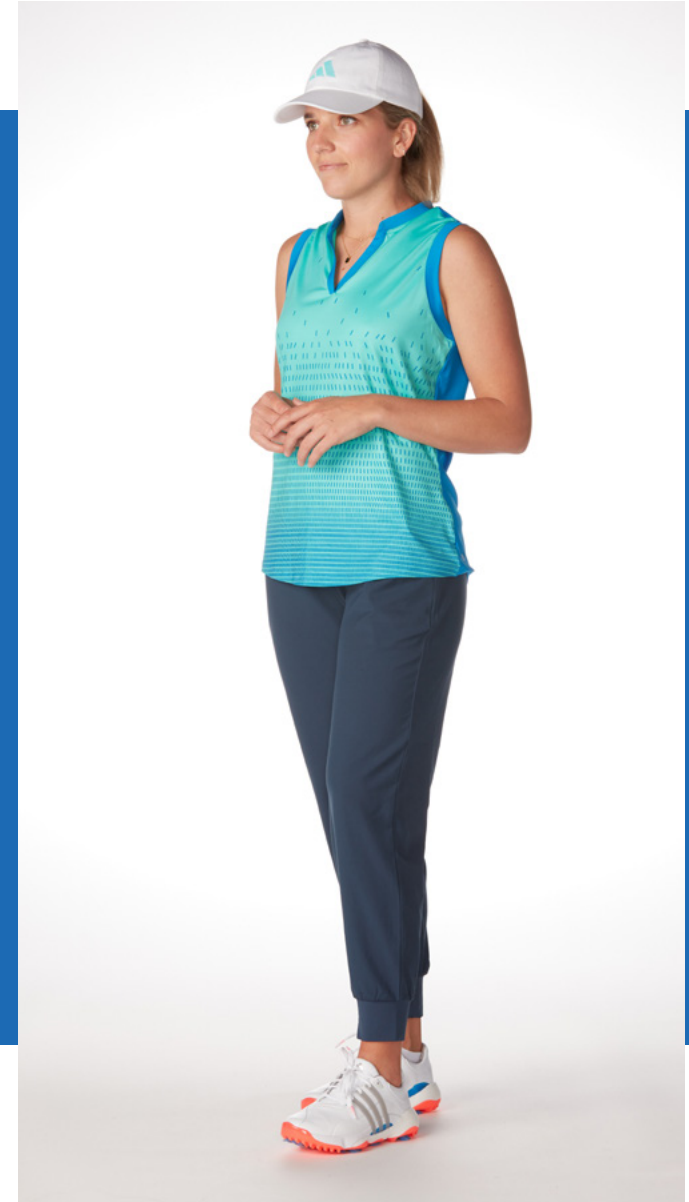
TOP: MENS MOSS STITCH PRIMEGREEN POLO SHIRT HE2895
BOTTOMS: GO-TO FIVE POCKET PANT GM0075



SPORT PERFORMANCE JACQUARD POLO HA3386
ULT365 SOLID SKORT HA3402

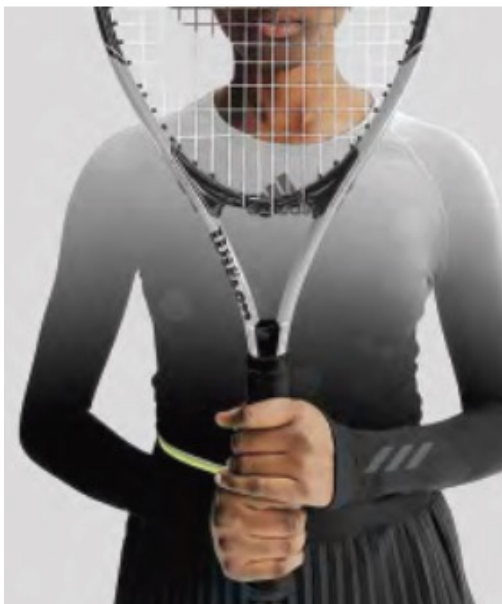
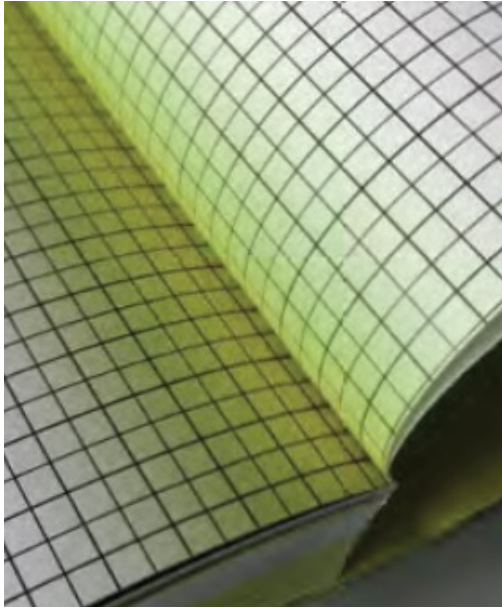


TOP: GO-TO SLEEVELESS POLO SHIRT HA6040
BOTTOMS: GO-TO SHORT HA3489



GRADIENT SLEEVELESS POLO HA3471
PRIMEBLUE JOGGER HA3475

SPRING | SUMMER 2022 COLLECTION COLOUR INSPIRATION - MAY



INFINITE ENERGY LEADING WITH LIME FOR BOLD ENERGY WITH A BLACK AND WHITE STORY AND HITS OF INDIGO THAT FEELS FLUID AND CRISP AT THE SAME TIME.

LEAD



PULSE LIME S22



LEGACY INDIGO S22

NEUTRALS

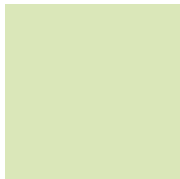


BLACK



WHITE

ACCENT



ALMOST LIME S22



LIGHT PURPLE



TOP: MENS STATEMENT PRIMEGREEN HEAT.RDY POLO SHIRT HI4754
BOTTOMS: WARPKNIT TAPERED PANT HA6226



TOP: MENS ANORAK PRIMEBLUE QUARTER ZIP PULLOVER HA9141
BOTTOMS: MENS PRIMEBLUE SHORT HA6130



TOP: MENS ABSTRACT PRINT PRIMEBLUE POLO SHIRT HA9172
BOTTOMS: GO-TO FIVE POCKET PANT GM0060



PRIMEBLUE SLEEVELESS POLO HA3470
PRIMEBLUE SPORT SKORT HA3460



PRIMEBLUE QUARTER ZIP JACKET HA3463
ULTIMATE365 PRINTED SKORT HF6072



HEAT.RDY SLEEVELESS POLO HH8604
SPORT SKORT HA6049



MEN'S APPAREL
SPRING | SUMMER
2022



STATEMENT SEAMLESS POLO

PRIMEGREEN

- | | | |
|---|---|---|
| <p>TM1962S22</p> <ul style="list-style-type: none"> • Sizes: XS-2XL • Regular fit • Two-button ribbed mock neck | <ul style="list-style-type: none"> • Seamless construction • Side hem vents • Slightly longer back hem | <ul style="list-style-type: none"> • 73% REC.PES/19% REC.PA/8% EL.Seamless:d |
|---|---|---|



H61758
CARBON/BLACK
CORE - PB - SCR

H61757
NIGHT MARINE/
NIGHT NAVY
MARCH
PB - SCR

HEAT.RDY MICROSTRIPE POLO

PRIMEGREEN

- | | |
|--|---|
| <p>TM1961S22</p> <ul style="list-style-type: none"> • Sizes: XS-2XL • Breathable Golf Polo Shirt • Regular Fit | <ul style="list-style-type: none"> • Breathable, Air-Cooling Heat.Rdy • Side Slits • Doubleknit-hydrophilic finish |
|--|---|



GL4402
CARBON BLACK
CORE - SA

GL4404
NAVY/WHITE
CORE
SA

ABSTRACT PRINT PRIMEBLUE POLO

PRIMEBLUE

- | | | |
|--|---|---|
| <p>TM1941S22</p> <ul style="list-style-type: none"> • Sizes: XS-2XL • Regular fit • Three-button polo collar | <ul style="list-style-type: none"> • Durable reinforced shoulder seams • Highly breathable and moisture wicking, UV50+ factor | <ul style="list-style-type: none"> • Four-way stretch fabric • 52% REC.PES/48% CO:Single jersey:160 |
|--|---|---|



HA9171
BLUE RUSH/CREW NAVY
MARCH - PB - SCR

HA9172
WHITE/PULSE
LIME
MAY - PB - SCR

STATEMENT JACQUARD HEAT.RDY POLO

PRIMEGREEN

- | | | |
|--|--|--|
| <p>TM1961S22</p> <ul style="list-style-type: none"> • Sizes: XS-2XL • Regular fit • Two-button polo collar | <ul style="list-style-type: none"> • Raglan sleeve stitching on back • Alllover jacquard | <ul style="list-style-type: none"> • 92% REC.PES/8% EL:1 x 1 flatknit rib:580 |
|--|--|--|



HG6063
BLUE RUSH/CREW NAVY
MARCH - PB - SCR

HE2885
LIGHT PURPLE/
LEGCAY INDIGO
MARCH
PB - SCR

GO TO PRIMEGREEN POLO

PRIMEGREEN

- | | | |
|--|--|--|
| <p>TM1951S22</p> <ul style="list-style-type: none"> • Sizes: XS-2XL • Regular fit • Two-button polo collar | <ul style="list-style-type: none"> • Soft cotton-touch fabric • Chest pocket • Side hem vents | <ul style="list-style-type: none"> • Slightly longer back hem • 89% REC.PES/11% EL:Single jersey:175 |
|--|--|--|



HA6113
WHITE
CORE - PB - SCR

HA6156
CREW NAVY
CORE
PB - SCR

HA6114
BLACK
CORE
PB - SCR

HA9117
SEMI MINT
RUSH
MARCH
PB - SCR

HA9119
ALMOST LIME
MAY
PB - SCR

H59736
LEGCAY INDIGO
MAY
PB - SCR

FLAG PRINT PRIMEBLUE POLO

PRIMEBLUE

- | | | |
|--|---|--|
| <p>TM1950S22</p> <ul style="list-style-type: none"> • Sizes: XS-2XL • Regular fit • Three-button polo collar | <ul style="list-style-type: none"> • Durable and breathable fabric • Alllover graphic | <ul style="list-style-type: none"> • 88% REC.PES/12% EL:Single jersey:170 |
|--|---|--|



HA9144
GREY FOUR/HEMP/GREY TWO
CORE - PB

HA6123
BLUE RUSH/SEMI MINT
RUSH/CREW NAVY
CORE - PB - SCR

STATEMENT PRIMEGREEN HEAT.RDY POLO

PRIMEGREEN

- | |
|--|
| <p>TM1965S22CF</p> <ul style="list-style-type: none"> • Sizes: XS-2XL • Regular fit |
|--|



HI4753
BLUE RUSH
MARCH - PB - SCR

HI4754
WHITE
MAY
PB - SCR

GO-TO NO SHOW POLO

PRIMEGREEN

- | | |
|---|--|
| <p>TM1967S22</p> <ul style="list-style-type: none"> • Sizes: XS-2XL • Regular fit • Two-button ribbed polo collar | <ul style="list-style-type: none"> • Soft cotton-touch fabric • Side hem vents • Slightly longer back hem |
|---|--|



HA6109
WHITE/WHITE
CORE - PB - SCR

HA6111
CREW NAVY/
SEMI MINT
RUSH
CORE
SA - SCR

HC5578
BLACK/LEGCAY
INDIGO
CORE
PB

JACQUARD LINES PRIMEGREEN POLO

PRIMEGREEN

- | | | |
|--|--|---|
| <p>TM1942S22</p> <ul style="list-style-type: none"> • Sizes: XS-2XL • Regular fit • Three-button polo collar | <ul style="list-style-type: none"> • Side hem vents • Slightly longer back hem • Alllover graphic | <ul style="list-style-type: none"> • 100% REC.PES:Jacquard:176 |
|--|--|---|



HC5576
CREW NAVY/WHITE
CORE - SA - SCR

HA6116
WHITE/GREY
THREE
CORE
SA - SCR

HA6117
BLUE RUSH/
SEMI MINT
RUSH
MARCH
PB

HA6118
BLACK/PULSE
LIME
MAY
PB - SCR

PRIMEBLUE SPORT COLLAR POLO **PRIMEBLUE**

- | | | |
|--|---|--|
| <p>TM1949S22</p> <ul style="list-style-type: none"> Sizes: XS-2XL Regular fit Two-snap ribbed sport collar | <ul style="list-style-type: none"> Ottoman stripe texture on front body and upper back panel | <ul style="list-style-type: none"> 88% REC.PES/12% EL:Single jersey:170 |
|--|---|--|



HA6159
BLACK
CORE - SA - SCR

HA9142
CREW NAVY
CORE
SA - SCR

HA6158
WHITE
CORE
SA - SCR

HA1468
SEMI MINT
RUSH
MARCH
PB - SCR

MOSS STITCH PRIMEGREEN POLO **PRIMEGREEN**

- | | | |
|--|--|---|
| <p>TM1947S22CF</p> <ul style="list-style-type: none"> Regular fit Three-button ribbed polo collar Raglan sleeves | <ul style="list-style-type: none"> Ribbed cuffs Slightly longer back hem | <ul style="list-style-type: none"> 100% REC.PES:Jacquard:117 |
|--|--|---|



HE2896
PULSE LIME/
WHITE
MAY - PB - SCR

HE2895
BLUE RUSH/WHITE
MARCH - PB - SCR

OTTOMAN STRIPE PRIMEGREEN POLO **PRIMEGREEN**

- | | | |
|--|--|---|
| <p>TM1934F21</p> <ul style="list-style-type: none"> Sizes: XS-2XL Regular fit Three-button polo collar | <ul style="list-style-type: none"> Side hem vents Stripe graphic | <ul style="list-style-type: none"> 93% REC.PES/7% EL:Single jersey:160 |
|--|--|---|



HA9159
CREW NAVY/WHITE
CORE - SA

HA9167
GREY TWO/
WHITE
CORE
SA - SCR

HA9165
BLACK/GREY SIX
CORE
SA - SCR

TWO COLOUR STRIPE PRIMEGREEN POLO LC **PRIMEGREEN**

- | | | |
|---|--|---|
| <p>TM1954S22LC</p> <ul style="list-style-type: none"> Sizes: XS-2XL Regular fit Three-button ribbed polo collar | <ul style="list-style-type: none"> Moisture absorbing Allover stripe print | <ul style="list-style-type: none"> 100% REC.PES:Engineered:145 |
|---|--|---|



HI5182
PULSE LIME/WHITE
CORE - SA - SCR

HI5181
NAVY/WHITE
CORE
SA - SCR

HI5180
BLACK/GREY SIX
MARCH
PB

HI5179
CREW NAVY/
RUSH
MAY
PB

TWO COLOUR STRIPE PRIMEGREEN POLO **PRIMEGREEN**

- | | | |
|---|--|---|
| <p>TM1954S22</p> <ul style="list-style-type: none"> Sizes: XS-2XL Regular fit Three-button ribbed polo collar | <ul style="list-style-type: none"> Moisture absorbing Allover stripe print | <ul style="list-style-type: none"> 100% REC.PES:Engineered:145 |
|---|--|---|



HE2298
CREW NAVY/WHITE
CORE - SA

H56794
BLACK/GREY SIX
CORE
SA

H56792
CREW NAVY/
BLUE RUSH
MARCH
PB

H56790
PULSE LIME/
WHITE
MAY
PB

ULTIMATE365 SOLID LC **PRIMEGREEN**

- | | | |
|---|---|---|
| <p>TM1861S21</p> <ul style="list-style-type: none"> Sizes: XS-2XL Performance Golf Polo Shirt Regular Fit | <ul style="list-style-type: none"> Medium-Weight Breathable Fabric Moisture-Absorbing | <ul style="list-style-type: none"> Aeroready 88% REC.PES/12% EL:Single jersey:170 |
|---|---|---|



GM4122
WHITE
CORE - SA+

GM4133
CREW NAVY
CORE
SA+

GM4014
BLACK
CORE
SA+

HA6230
BLUE RUSH
MARCH
PB

ULTIMATE365 SOLID **PRIMEGREEN**

- | | | |
|---|--|---|
| <p>TM1860S21</p> <ul style="list-style-type: none"> Sizes: XS-2XL Performance Golf Polo Shirt Regular Fit | <ul style="list-style-type: none"> Medium-Weight Breathable Fabric Moisture-Absorbing | <ul style="list-style-type: none"> Aeroready 88% REC.PES/12% EL:Single jersey:170 |
|---|--|---|



GM0106
CREW NAVY
CORE - SA

GM0096
BLACK
CORE - SA

GM0091
WHITE
CORE - SA

HA6224
BLUE RUSH
MARCH - PB

LONG SLEEVE THERMAL POLO **PRIMEGREEN**

- | | | |
|--|---|--|
| <p>TM1921F21</p> <ul style="list-style-type: none"> Sizes: XS-2XL Regular fit Ribbed polo collar | <ul style="list-style-type: none"> Stretchy, brushed thermal fabric 84% recycled polyester 16% elastane engineered | <ul style="list-style-type: none"> Ribbed cuffs and hem |
|--|---|--|



GU2669
BLACK
CORE - PB

GU2668
CREW NAVY
CORE - PB

PRIMEKNIT QUARTER ZIP PULLOVER **PRIMEGREEN**

- | | | |
|--|--|--|
| <p>TM4460S22</p> <ul style="list-style-type: none"> Sizes: XS-2XL Regular fit Quarter zip with stand-up collar | <ul style="list-style-type: none"> Back upper body and sleeves: Primeknit 100% recycled nylon flat knit | <ul style="list-style-type: none"> Ribbed sleeve hems, Banded hem 94% REC.PES/6% EL:Dobby:177: |
|--|--|--|



H61759
BLACK
CORE - PB

HE2889
CREW NAVY
CORE - PB

ANORAK PRIMEBLUE QUARTER ZIP PULLOVER PRIMEBLUE

- | | | |
|---|---|---|
| <p>TM4465S22</p> <ul style="list-style-type: none"> Sizes: XS-2XL Regular fit Offset half zip with hood | <ul style="list-style-type: none"> Front welt pockets Drawcord-adjustable hem Hybrid knit/woven fabric | <ul style="list-style-type: none"> 100% REC. PES: Doubleknit:210 |
|---|---|---|



HA9141
BLACK
MAY - PB

HG8832
CREW NAVY
MARCH - PB

GO-TO PRIMEBLUE CARDIGAN PRIMEBLUE

- | | |
|---|---|
| <p>TM4464S22</p> <ul style="list-style-type: none"> Sizes: XS-2XL Regular fit Snap-button front with V-neck | <ul style="list-style-type: none"> Soft fabric with a smooth finish 54% CO/46% REC. PES: Doubleknit:210 |
|---|---|



HA9101
CREW NAVY
CORE - PB

HA9108
BLACK
CORE - PB

COLD.RDY 1/4 ZIP

- | | | |
|--|--|---|
| <p>TM5441F21</p> <ul style="list-style-type: none"> Sizes: XS-2XL Regular fit Quarter zip with stand-up collar | <ul style="list-style-type: none"> French terry Front insert: 100% recycled polyester doubleknit | <ul style="list-style-type: none"> Lightweightbrushed-back fabric 86% REC. PES/14% EL: French terry:285 |
|--|--|---|



GU5113
BLACK
CORE - PB

GR3090
CREW NAVY
CORE - PB

GO-TO CREWNECK PRIMEGREEN PULLOVER PRIMEGREEN

- | |
|--|
| <p>TM1868S21</p> <ul style="list-style-type: none"> Sizes: XS-2XL 94% REC. PES/6% EL: Jacquard:250: |
|--|



HG8837
BLACK/GREY SIX
COR SA

HG8833
GREY TWO/
WHITE
CORE SA

HG8836
MAGIC LIME/
ALMOST LIME
MAY PB

HG8835
CREW NAVY/GREY THREE
CORE - SA

GO-TO RECYCLED MATERIALS FULL ZIP JACKET PRIMEGREEN

- | | | |
|---|---|---|
| <p>TM4461S22</p> <ul style="list-style-type: none"> Sizes: XS-2XL Regular fit Raglan sleeves with cuffs | <ul style="list-style-type: none"> Slight droptail hem Soft and stretchy hybrid knit/woven fabric | <ul style="list-style-type: none"> 72% REC. PES/28% PES: Single jersey:158 |
|---|---|---|



HA9162
CREW NAVY
CORE - PB

HA9160
BLACK
CORE - PB

DEBOSS PRIMEGREEN QUARTER ZIP PULLOVER PRIMEGREEN

- | | | |
|--|--|---|
| <p>TM4463S22</p> <ul style="list-style-type: none"> Sizes: XS-2XL Regular fit Quarter zip with stand-up collar | <ul style="list-style-type: none"> Very stretchy fabric Raglan sleeves Mesh side panels | <ul style="list-style-type: none"> Elastic hem, 100% REC. PES: Twill - right hand (Z):152 |
|--|--|---|



HA9118
CREW NAVY
MARCH
PB

HA9120
BLACK
CORE - PB

DWR QUARTER ZIP

- | | | |
|--|--|---|
| <p>TM4440F21</p> <ul style="list-style-type: none"> Sizes: XS-2XL Regular fit Quarter zip with stand-up collar | <ul style="list-style-type: none"> 100% recycled polyester jacquard with durable water-repellent (DWR) coating Soft, stretchy fabric | <ul style="list-style-type: none"> Banded cuffs and hem 100% REC. PES: Jacquard:260 |
|--|--|---|



H53965
BLACK
CORE - SA+

GR3105
CREW NAVY
CORE SA+

HC5575
GREY SIX
CORE SA+

GU5090
WHITE
CORE SA+

HC5574
BLUE RUSH
MARCH
PB

HA6136
LEG CAY INDIGO
MAY
PB

COLOUR BLOCK QUARTER ZIP PULLOVER PRIMEGREEN

- | | | |
|--|--|---|
| <p>TM4462S22CF</p> <ul style="list-style-type: none"> Regular fit Quarter zip with stand-up collar Sleeves: 91% recycled polyester | <ul style="list-style-type: none"> 9% elastane interlock Drawcord-adjustable hem Midweight mesh front body fabric | <ul style="list-style-type: none"> Light and stretchy fabric in sleeves and back 100% REC. PES: Doubleknit:220: |
|--|--|---|



HE5453
WHITE/BLACK
CORE SA

HG8831
GREY THREE/
CREW NAVY
CORE SA

HE5452
BLUE RUSH/
CREW NAVY
MARCH
PB

HC5572
BLACK/PULSE
LIME
MAY
PB

HC5573
GREY SIX/BLACK
CORE - SA

PRIMEGREEN UPF QUARTER ZIP PULLOVER LC PRIMEGREEN

- TM4467S22LC**
- Sizes: XS-2XL
 - Quarter zip with stand-up collar
 - Soft, lightweight fabric
 - Moisture absorbing
 - UV 50+ factor
 - 100% REC. PES: Doubleknit:170



HF2974
CREW NAVY/WHITE
CORE - SA+

HC5582
GREY THREE/
BLACK
CORE
SA+

H56800
SEMI MINT
RUSH/CREW
NAVY
MARCH
PB

H56801
BLACK/PULSE
LIME
MAY
PB

PRIMEGREEN UPF QUARTER ZIP PULLOVER PRIMEGREEN

- TM4467S22**
- Sizes: XS-2XL
 - Quarter zip with stand-up collar
 - Soft, lightweight fabric
 - Moisture absorbing
 - UV 50+ factor
 - 100% REC. PES: Doubleknit:170



H54060
BLACK
CORE - SA

HC6636
CREW NAVY
CORE
SA

H54062
SEMI MINT
RUSH
MARCH
PB

CLUB QUARTER ZIP VEST PRIMEGREEN

- TM4425S21**
- Sizes: XS-2XL
 - 65% REC. PES/35% PES: Doubleknit:260



GH7081
CREW NAVY
CORE - SA+

GH7080
BLACK
CORE
SA+

NOVELTY GOLF HOODIE PRIMEGREEN

- TM4446F21**
- Sizes: XS-2XL
 - Regular fit
 - Quarter zip with hood
 - 91% recycled polyester, 9% elastane interlock
 - Lightweight layering fabric
 - UV 50+ factor
 - 91% REC. PES/9% EL: Interlock:230



GR3091
CREW NAVY
CORE - SA

GS9450
BLACK
CORE
SA

GS9451
WHITE
CORE
SA

HA6138
BLUE RUSH
MARCH
PB

CLUB QUARTER ZIP PRIMEGREEN

- TM4424S21**
- Sizes: XS-2XL
 - 65% REC. PES/35% PES: Doubleknit:260:



GM4299
CREW NAVY
CORE - SA+

GM4298
BLACK
CORE
SA+

GL0141
WHITE
CORE
SA+

PIN ROLL PANT PRIMEGREEN

- TM6405S21**
- Sizes: 30-40
 - Tapered at leg
 - Stretchy fabric
 - 87% REC. PES/13% EL-Dobby-hydrophilic finish



GM0011
BLACK
CORE - PB

GM0012
CREW NAVY
CORE
PB

WARPKNIT TAPERED PANT

- TM6470S22**
- Sizes: 30-40
 - Regular fit
 - Belt loops with fly
 - Breathable four-way stretch fabric
 - Front and back pockets
 - One inner cargo pocket
 - Tapered legs
 - Lightweight
 - 53% PES/47% REC. PES: Tricot:210



HA6226
BLACK
CORE - SA

HA6161
CREW NAVY
CORE
SA

GO-TO COMMUTER PRIMEGREEN PANT PRIMEGREEN

- TM6467S22**
- Sizes: 30-40
 - Loose on top, tapered at leg
 - Stretchy fabric
 - Elastic back waist with belt loops and fly
 - Front and back pockets
 - Moisture absorbing
 - 95% REC. PA/5% EL: Twill:165



HA6218
BLACK
CORE - SA

HA6227
CREW NAVY
CORE
SA

HA6219
HEMP
CORE
SA

GO-TO FIVE POCKET PANT PRIMEGREEN

- TM6408S21**
- Sizes: 30-40
 - Golf Pants For On Or Off Course
 - Regular Fit
 - Cool And Dry Feel
 - Classic Five-Pocket design
 - Silicone Print Gripper tape in waist
 - 95% REC. PA/5% EL: Twill:165



GM0060
BLACK
CORE - SA

GM0075
CREW NAVY
CORE
SA

GM0057
GREY THREE
CORE
SA

GM3507
CLEAR BROWN
CORE
SA

JOGGER PRIMEGREEN PANT

PRIMEGREEN

- | | | |
|--|--|---|
| <p>TM6468S22AS</p> <ul style="list-style-type: none"> • Sizes: 30-40 • Regular fit • Belt loops with fly | <ul style="list-style-type: none"> • Breathable four-way stretch fabric • Front and back pockets • Balanced weight fabric | <ul style="list-style-type: none"> • UV 50+ factor • 86% REC.PES/14% EL:Ripstop:148 |
|--|--|---|



HG3669
GREY THREE/GREY ONE
CORE - PB

HI5753
BLACK/GREY
THREE
CORE

HG3670
CREW NAVY/
DARK MARINE
CORE
PB

GO-TO RECYCLED MATERIALS SHORT 9IN

- | | | |
|--|--|--|
| <p>TM6462S22</p> <ul style="list-style-type: none"> • Sizes: 30-40 • Regular fit • Belt loops with fly | <ul style="list-style-type: none"> • Back body: 53% polyester, 47% recycled polyester tricot • Back welt and back zip pocket | <ul style="list-style-type: none"> • 95% REC.PA/5% EL:Twill:165 |
|--|--|--|



HA6207
BLACK
CORE - SA

HA9131
GREY THREE
CORE
SA

HA9132
CREW NAVY
CORE
SA

HA9130
HEMP
CORE
SA

PRIMEBLUE SHORT 9IN

PRIMEBLUE

- | | | |
|---|--|--|
| <p>TM6469S22</p> <ul style="list-style-type: none"> • Sizes: 30-40 • Regular fit • Elastic waist,belt loops and fly | <ul style="list-style-type: none"> • Four-way stretch fabric with soft feel • Front and back pockets | <ul style="list-style-type: none"> • Mesh inserts • 87% REC.PES/13% EL:Dobby:156 |
|---|--|--|



HA6130
WHITE
CORE - SA

ULTIMATE365 PRIMEGREEN TAPERED PANT

- | | | |
|---|--|---|
| <p>TM6472S22</p> <ul style="list-style-type: none"> • Sizes: 30-40 (30, 32, 34) • Regular fit • Belt loops with fly | <ul style="list-style-type: none"> • Breathable four-way stretch fabric • Front and back pockets • Balanced weight fabric | <ul style="list-style-type: none"> • UV 50+ factor • 100% REC.PES:Twil - right hand (Z):152 |
|---|--|---|



HA6206
BLACK
CORE - SA+

HA6205
CREW NAVY
CORE
SA+

HC6645
GREY FIVE
CORE
SA+

HA9134
GREY THREE
COR
SA+

HA1464
HEMP
CORE
SA+

HA6204
WHITE
CORE
PB

HC5580
TEAM POWER
RED
CORE
PB

HA9136
BLUE RUSH
MARCH
PB

ULTIMATE365 CORE SHORT 8.5IN

- | | |
|--|--|
| <p>TM6401S21</p> <ul style="list-style-type: none"> • Sizes: 30-40 • Regular fit • Lightweight and breathable feel | <ul style="list-style-type: none"> • Belt Loops, Zip Fly, front and back pockets • 88% REC.PES/12% EL:Plain weave:173: |
|--|--|



GM0308
CREW NAVY
CORE - SA+

HA6125
GREY THREE
CORE
SA+

GL0154
BLACK
CORE
SA+

GS1475
HEMP
CORE
SA+

HA6127
BLUE RUSH
MARCH
PB

HE4209
SEMI MINT
RUSH
MARCH
PB

HA6135
PULSE LIME
MAY
PB

ULTIMATE365 FLAG PRINT SHORT 9IN

PRIMEGREEN

- | | | |
|---|---|--|
| <p>TM6460S22</p> <ul style="list-style-type: none"> • Sizes: 30-40 • Regular fit • Stretch waist, belt loops, zip fly | <ul style="list-style-type: none"> • Moisture wicking • Silicone grip tape in waist • Front and back pockets | <ul style="list-style-type: none"> • Allover graphic • 88% REC.PES/12% EL: Plain weave:173 |
|---|---|--|



HA9126
CLEAR BROWN/HEMP/WHITE
CORE - PB

HC5577
BLACK/GREY
THREE/WHITE
CORE
PB

HA9122
CREW NAVY/BLUE
RUSH/SEMI MINT
RUSH
MARCH
PB

RAIN.RDY JACKET

- | | | |
|--|---|--|
| <p>TM5485F20</p> <ul style="list-style-type: none"> • Sizes: XS-ZXL • 10,000Mm Waterproof • Breathable | <ul style="list-style-type: none"> • Fully Taped • Pfc Fre • Stand Up Collar | <ul style="list-style-type: none"> • 4 Way Stretch • RAIN.RDY • 80% REC.PES/20% Engineered:120: |
|--|---|--|



FR1408
COLLEGIATE NAVY
CORE - SA

FR1407
BLACK/WHITE
CORE - SA

RAIN.RDY. PANT

- | | | |
|--|---|---|
| <p>TM6347F20CF</p> <ul style="list-style-type: none"> • Sizes: XS-ZXL • 10,000Mm Waterproof • Breathable | <ul style="list-style-type: none"> • Fully Taped • Adjustable • RAIN.RDY | <ul style="list-style-type: none"> • 100% REC.PES:Poplin:123 |
|--|---|---|



GJ9440
COLLEGIATE NAVY
CORE - SA

GD1985
BLACK
CORE
SA

PROVISIONAL RAIN JACKET

PRIMEGREEN

- | | | |
|--|--|--|
| <p>TM5486F20CF</p> <ul style="list-style-type: none"> • Sizes: XS-2XL • Water Resistant • Critically seam sealed | <ul style="list-style-type: none"> • Stand up collar • Breathable • 4 Way Stretch | <ul style="list-style-type: none"> • 100% REC. PES:Poplin:123 |
|--|--|--|



GD1981
BLACK
CORE - SA

GD1982
COLLEGIATE
NAVY
CORE
SA

PROVISIONAL PANT

PRIMEGREEN

- | | | |
|---|--|--|
| <p>TM6348F20CF</p> <ul style="list-style-type: none"> • Sizes: XS-2XL • Water Resistant • Critically seamsealed | <ul style="list-style-type: none"> • Stand Up Collar • Breathable • 4 Way Stretch | <ul style="list-style-type: none"> • 100% REC. PES:Poplin:123 |
|---|--|--|



GD1986
BLACK
CORE - SA

CORE PRIMEGREEN FULL ZIP JACKET

PRIMEGREEN

- | | | |
|---|---|---|
| <p>TM4468S22</p> <ul style="list-style-type: none"> • Sizes: XS-2XL • Full zip with stand-up collar • Front pockets | <ul style="list-style-type: none"> • Raglan sleeves with partial elastic cuffs | <ul style="list-style-type: none"> • 100% REC. PES:Twill - right hand (Z):152: |
|---|---|---|



H56797
BLACK
CORE - SA

H56796
CREW NAVY
CORE
SA

FROSTGUARD VEST (SUBJECT TO AVAILABILITY)

PRIMEGREEN

- | | | |
|---|---|--|
| <p>TM5445F21CP</p> <ul style="list-style-type: none"> • Sizes: XS-2XL • Regular fit • Full zip with stand-up collar | <ul style="list-style-type: none"> • Dobby with durable water-repellent (DWR) coating • Fill: 80% duck down, 20% feathers | <ul style="list-style-type: none"> • 86% PA/14% EL:Dobby:131:Stitch-free double-layer baffle insulation |
|---|---|--|



H50987
CREW NAVY
CORE - STA

H50988
BLACK
CORE
STA

FROSTGUARD JACKET (SUBJECT TO AVAILABILITY)

PRIMEGREEN

- | | | |
|---|---|--|
| <p>TM5443F21CP</p> <ul style="list-style-type: none"> • Sizes: XS-2XL • Regular fit • Full zip with stand-up collar | <ul style="list-style-type: none"> • Dobby with durable water-repellent (DWR) coating • Fill: 80% duck down, 20% feathers | <ul style="list-style-type: none"> • 86% PA/14% EL:Dobby:131:Stitch-free double-layer baffle insulation |
|---|---|--|



H50986
BLACK
CORE - STA

H50984
CREW NAVY
COR
STA

W O M E N ' S A P P A R E L
S P R I N G | S U M M E R
2 0 2 2



HEAT.RDY SHORT SLEEVE POLO **PRIMEGREEN**

TW1501S22	<ul style="list-style-type: none"> Sizes: XS-XL Regular fit 100% recycled polyester 	<ul style="list-style-type: none"> Double-layer mesh construction UV 50+ factor Reflective details 	<ul style="list-style-type: none"> Doubleknit-hydrophilic finish
------------------	--	---	---



HA6052
LEGACY BURGUNDY
CORE - PB

HA6062
BLACK
CORE - PB

HA6061
CREW NAVY
MARCH
PB

HEAT.RDY SLEEVELESS POLO **PRIMEGREEN**

TW1502S22	<ul style="list-style-type: none"> Sizes: XS-XL Slim fit V-neck polo collar 	<ul style="list-style-type: none"> 100% recycled polyester Double-layer mesh construction Doubleknit-hydrophilic finish
------------------	--	--



HA6057
ALMOST PINK
CORE - PB

HA6059
BLUE RUSH
MARCH
PB

HA6060
WHITE
MAY
PB

HEAT.RDY MOCK **PRIMEGREEN**

TW1500S22	<ul style="list-style-type: none"> Sizes: XS-XL Regular fit Half zip with stand-up 	<ul style="list-style-type: none"> 100% recycled polyester d Double-layer mesh construction Raglan sleeves 	<ul style="list-style-type: none"> UV 50+ factor Doubleknit-hydrophilic finish
------------------	---	---	--



HA6058
ALMOST PINK
CORE - PB

HA6063
CREW NAVY
MARCH
PB

HA6064
WHITE
MAY
PB

GO-TO SHORT SLEEVE POLO **PRIMEGREEN**

TW3823S22	<ul style="list-style-type: none"> Sizes: XS-XL Regular fit 100% recycled polyester 	<ul style="list-style-type: none"> Double-layer mesh construction UV 50+ factor Reflective details 	<ul style="list-style-type: none"> Doubleknit-hydrophilic finish
------------------	--	---	---



HA6042
CREW NAVY
CORE - PB

HA3502
WHITE
CORE
PB

GO-TO SLEEVELESS POLO SHIRT **PRIMEGREEN**

TW3824S22	<ul style="list-style-type: none"> Sizes: XS-XL Regular fit V-neck 	<ul style="list-style-type: none"> 89% recycled polyester, 11% elastane single jersey Side hem vents 	<ul style="list-style-type: none"> UV 50+ factor 89% REC. PES/11% EL-Single jersey-hydrophilic finish
------------------	---	---	---



HA3503
ALMOST PINK
CORE - PB

HA4040
SEMI MINT
RUSH
MARCH
PB

SPORT PERFORMANCE COLOUR BLOCKED POLO **PRIMEGREEN**

TW3815S22	<ul style="list-style-type: none"> Sizes: XS-XL Relaxed fit Open polo collar 	<ul style="list-style-type: none"> 100% recycled polyester piqué Soft and stretchy fabric Moisture absorbing 	<ul style="list-style-type: none"> Droptail hem Colorblocked Pique-hydrophilic finish
------------------	---	---	--



HA3447
ALMOST PINK
CORE - PB

SPORT PERFORMANCE JACQUARD POLO **PRIMEGREEN**

TW3810S22	<ul style="list-style-type: none"> Sizes: XS-XL Regular fit, Closed polo collar, zipper on back 	<ul style="list-style-type: none"> 100% recycled polyester raschel Moisture absorbing Cap sleeves 	<ul style="list-style-type: none"> Shaped hem Raschel-hydrophilic finish
------------------	--	--	--



HG8382
ALMOST PINK/WHITE
CORE - PB

HG8383
WHITE
CORE
PB

HA3386
BLUE RUSH
MARCH
PB

PRIMEBLUE SLEEVELESS POLO **PRIMEBLUE**

TW3813S22	<ul style="list-style-type: none"> Sizes: XS-XL Regular fit Zip polo collar 	<ul style="list-style-type: none"> Moisture absorbing Side hem vents Scooped hem 	<ul style="list-style-type: none"> 93% REC. PES/7% EL-Single jersey-hydrophilic finish
------------------	--	---	---



HG4893
WHITE
CORE - SA

HA6446
CREW NAVY
CORE
SA

HA3469
LEGACY BURGUNDY
CORE
PB

HA3470
PULSE LIME
MAY
PB

GRADIENT SLEEVELESS POLO **PRIMEGREEN**

TW3811S22	<ul style="list-style-type: none"> Sizes: XS-XL Regular fit V-neck 	<ul style="list-style-type: none"> Lightweight fabric Moisture absorbing UV 50+ factor 	<ul style="list-style-type: none"> 88% REC. PES/12% EL-Single jersey-hydrophilic finish / anti microbial / anti uv
------------------	---	---	---



HA3385
LEGACY BURGUNDY
CORE - PB

HA3471
BLUE RUSH
CORE
PB

HA3472
PULSE LIME
CORE
PB

GRAPHIC T-SHIRT

- | | | | |
|-----------------|---|--|--|
| TW118S22 | <ul style="list-style-type: none"> Sizes: XS-XL Regular fit Round neck | <ul style="list-style-type: none"> 70% cotton, 30% recycled polyester Straight hem Better Cotton Initiative | <ul style="list-style-type: none"> Single jersey-hydrophilic finish |
|-----------------|---|--|--|



HA3479
CREW NAVY
MARCH - PB

ESSENTIALS SHORT SLEEVE POLO

- | | | | |
|------------------|---|--|---|
| TW3817S22 | <ul style="list-style-type: none"> Sizes: XS-XL Regular fit Four-button placket crewneck | <ul style="list-style-type: none"> 100% recycled polyester doubleknit Moisture absorbing Shaped hem | <ul style="list-style-type: none"> Doubleknit-hydrophilic finish |
|------------------|---|--|---|



HA3482
WHITE
CORE - PB

UPF 50 SOLID LONG SLEEVE POLO

- | | | | |
|------------------|--|---|---|
| TW3821S22 | <ul style="list-style-type: none"> Sizes: XS-XL Regular fit Half zip with stand-up collar | <ul style="list-style-type: none"> Moisture absorbing Mesh sleeve undersides UV 50+ factor | <ul style="list-style-type: none"> Balanced weight fabric 88% REC.PES/12% EL-Single jersey-hydrophilic finish |
|------------------|--|---|---|



HA3424
BLACK
CORE - SA

HA3423
WHITE
CORE - SA

SPACEDYE SHORT SLEEVE POLO

- | | | | |
|------------------|--|--|--|
| TW3624S22 | <ul style="list-style-type: none"> Sizes: XS-XL Regular fit Four-button polo collar | <ul style="list-style-type: none"> 100% recycled polyester piqué Four-way stretch fabric Shaped hem | <ul style="list-style-type: none"> Pique-hydrophilic finish |
|------------------|--|--|--|



HA3478
ALMOST PINK/LEGACY BURGUNDY
CORE - SA

HF1577
BLACK/WHITE
CORE - SA

HF1576
CREW NAVY/
WHITE
CORE - SA

HA6069
WHITE/BLACK
CORE - SA

HA6068
SEMI MINT
RUSH/BLUE
RUSH
MARCH
PB

ULTIMATE 365 PRINTED SHORT SLEEVE POLO

- | | | |
|--------------------|---|---|
| TW3818S22CP | <ul style="list-style-type: none"> Sizes: XS-XL Regular fit Moisture absorbing | <ul style="list-style-type: none"> UV 50+ factor 88% REC.PES/12% EL-Single jersey-hydrophilic |
|--------------------|---|---|



HG8517
ALMOST PINK
CORE - PB

HG8518
CREW NAVY
MARCH
PB

HG8519
WHITE
MAY
PB

ULTIMATE 365 SOLID SLEEVELESS POLO

- | | | | |
|------------------|--|--|--|
| TW3900S21 | <ul style="list-style-type: none"> Sizes: XS-XL Regular fit Four-button polo collar | <ul style="list-style-type: none"> Curved hem Four-way stretch fabric Mid-weight fabric | <ul style="list-style-type: none"> 50+ UV factor 88% REC.PES/12% EL-Single jersey-hydrophilic finish |
|------------------|--|--|--|



HA6044
ALMOST PINK
CORE - SA

GV4715
BLACK
CORE - SA

GL6698
CREW NAVY
CORE - SA+

GL6699
WHITE
CORE - SA+

HA6045
BLUE RUSH
MARCH
PB

ESSENTIALS SLEEVELESS PRIMEGREEN POLO

- | | | | |
|------------------|--|---|---|
| TW3814S22 | <ul style="list-style-type: none"> Sizes: XS-XL Regular fit Mock neck | <ul style="list-style-type: none"> 100% recycled polyester jacquard Moisture absorbing Scooped hem | <ul style="list-style-type: none"> Jacquard-hydrophilic finish |
|------------------|--|---|---|



HA3480
BLACK/WHITE
CORE - PB

ULTIMATE 365 SLEEVELESS POLO

- | | | | |
|--------------------|---|--|---|
| TW3819S22CP | <ul style="list-style-type: none"> Sizes: XS-XL Regular fit Three-button polo collar | <ul style="list-style-type: none"> UV 50+ factor Graphic print on front body | <ul style="list-style-type: none"> 88% REC.PES/12% EL-Single jersey-hydrophilic finish |
|--------------------|---|--|---|



HG8521
ALMOST PINK
CORE - PB

HG8522
CREW NAVY
MARCH
PB

HG8520
WHITE
MAY
PB

ULTIMATE 365 SOLID SHORT SLEEVE POLO

- | | | | |
|------------------|--|---|--|
| TW3901S21 | <ul style="list-style-type: none"> Sizes: XS-XL Regular fit Four-button polo collar | <ul style="list-style-type: none"> Four-way stretch fabric Slightly curved hem 50+ UV factor | <ul style="list-style-type: none"> 88% REC.PES/12% EL-Single jersey-hydrophilic |
|------------------|--|---|--|



GM5429
BLACK
MAY - SA

GL6705
CREW NAVY
CORE - SA

GL6707
WHITE
CORE - SA

HA6047
PULSE LIME
MAY
PB

HEAT.RDY QUARTER ZIP HOODIE **PRIMEGREEN**

- | | |
|---|--|
| <p>TW4605S22</p> <ul style="list-style-type: none"> Sizes: XS-XL Regular fit Quarter zip with drawcord hood | <ul style="list-style-type: none"> 86% recycled nylon, 14% elastane Plain weave Drawcord-adjustable hem Plain weave-hydrophilic finish |
|---|--|



HA6053
BLACK
CORE - PB

COLD.RDY FULL ZIP JACKET **PRIMEGREEN**

- | | |
|--|--|
| <p>TW5521F21</p> <ul style="list-style-type: none"> Sizes: XS-XL Regular fit Full zip with stand-up collar | <ul style="list-style-type: none"> Front zip pockets Thumbholes on cuffs 82% REC. PES/18% EL-Fleece-brushed back / shearing |
|--|--|



GR3538
BLACK
CORE - PB

GU3926
WHITE
CORE
PB

ESSENTIALS BOMBER JACKET

- | | | |
|--|---|---|
| <p>TW4601S22</p> <ul style="list-style-type: none"> Sizes: XS-XL Regular fit Full zip with bomber collar | <ul style="list-style-type: none"> Two front pockets Raglan sleeves Better Cotton Initiative | <ul style="list-style-type: none"> 90% CO/10% EL-Single jersey |
|--|---|---|



HA3432
WHITE
CORE - PB

TEXTURE FULL ZIP JACKET **PRIMEGREEN**

- | | | |
|---|---|---|
| <p>TW4600S22</p> <ul style="list-style-type: none"> Sizes: XS-XL Regular fit Full zip with high stand-up collar | <ul style="list-style-type: none"> Front pockets Cuffed sleeves Banded hem | <ul style="list-style-type: none"> Doubleknit-hydrophilic finish |
|---|---|---|



HA3382
ALMOST PINK
CORE - SA

HA3395
BLACK
CORE
SA+

HA3394
CREW NAVY
CORE
SA+

HA3383
LEGACY
BURGUNDY
CORE
PB

HA3400
WHITE
CORE
SA+

HG4330
SEMI MINT
RUSH
MARCH
PB

HA3389
PULSE LIME
MAY
PB

PRIMEBLUE QUARTER ZIP JACKET **PRIMEBLUE**

- | | | |
|--|---|--|
| <p>TW4602S22</p> <ul style="list-style-type: none"> Sizes: XS-XL Regular fit Offset four-snap front placket with mock neck | <ul style="list-style-type: none"> Front zip pockets Banded cuffs and hem Colorblocked | <ul style="list-style-type: none"> Single jersey-hydrophilic finish |
|--|---|--|



HA3458
BLUE RUSH MEL.
MARCH - PB

HA3463
PULSE LIME
MEL.
MAY
PB

ESSENTIALS CLUB HOODIE **PRIMEGREEN**

- | | | |
|---|---|--|
| <p>TW4603S22</p> <ul style="list-style-type: none"> Sizes: XS-XL Regular fit Two-button placket with hood | <ul style="list-style-type: none"> Soft fabric Kangaroo pocket Drawcord-adjustable hem | <ul style="list-style-type: none"> Dobby-hydrophilic finish |
|---|---|--|



HA3397
ALMOST PINK / WHITE
CORE - PB

HA3476
BLACK/WHITE
CORE
PB

ESSENTIALS FULL ZIP JACKET **PRIMEGREEN**

- | | |
|--|---|
| <p>TW4604S22</p> <ul style="list-style-type: none"> Sizes: XS-XL Regular fit Full zip with stand-up collar | <ul style="list-style-type: none"> Elastic cuffs and hem Dobby-hydrophilic finish |
|--|---|



HA6448
BLACK
CORE - PB

HA3441
CREW NAVY
CORE
PB

RAIN.RDY JACKET

- | | | |
|---|--|--|
| <p>TW5516F20</p> <ul style="list-style-type: none"> Sizes: XS-XL Regular fit RAIN.RDY | <ul style="list-style-type: none"> Mesh lining Fully seam-sealed front zip pockets Adjustable cuffs and hem | <ul style="list-style-type: none"> PFC-free water-repellent finish 100% PES-Taffeta-DWR - PFC Free |
|---|--|--|



FT0694
BLACK
CORE - SA

PROVISIONAL JACKET

PRIMEGREEN

- | | | | |
|------------------|---|--|---|
| TW5517F20 | <ul style="list-style-type: none"> Sizes: XS-XL Regular fit Full zip with hood | <ul style="list-style-type: none"> RAIN.RDY Front zip pockets PFC-free water-repellent finish | <ul style="list-style-type: none"> 100% PES-Taffeta-DWR - PFC Free |
|------------------|---|--|---|



FT5951
BLACK
CORE - SA

FROSTGUARD JACKET

- | | | | |
|--------------------|--|--|---|
| TW5523F21CP | <ul style="list-style-type: none"> Sizes: XS-XL Regular fit Full zip with stand-up collar | <ul style="list-style-type: none"> Shell: 86% nylon, 14% elastane Filling: 80% duck down, 20% feathers | <ul style="list-style-type: none"> Front zip pocket Stitch-free bonded quilting |
|--------------------|--|--|---|



H48517
BLACK
CORE - STA

SPORT DRESS

PRIMEGREEN

- | | | | |
|------------------|---|--|--|
| TM1934F21 | <ul style="list-style-type: none"> Sizes: XS-XL Regular fit V-neck | <ul style="list-style-type: none"> Two side pockets on detachable undershorts Two back pockets | <ul style="list-style-type: none"> Plain weave-hydrophilic finish |
|------------------|---|--|--|



HC0241
WHITE
CORE - PB

HA6055
WHITE
CORE
PB

HA6054
WHITE
MARCH
PB

PRIMEBLUE DRESS

PRIMEBLUE

- | | | | |
|------------------|--|---|---|
| TW6831S22 | <ul style="list-style-type: none"> Sizes: XS-XL Regular fit Half zip with stand-up collar | <ul style="list-style-type: none"> 100% recycled polyester twill Moisture absorbing Two front pockets, one back pocket | <ul style="list-style-type: none"> Detached undershorts Scalloped hem Twill-hydrophilic finish |
|------------------|--|---|---|



HE1592
BLACK
CORE - SA

HE1593
CREW NAVY
CORE
SA

SPORT PERFORMANCE COLOUR BLOCK DRESS

PRIMEGREEN

- | | | | |
|------------------|--|---|--|
| TW6820S22 | <ul style="list-style-type: none"> Sizes: XS-XL Regular fit Polo collar with hidden placket | <ul style="list-style-type: none"> 100% recycled polyester piqué Moisture absorbing Two front pockets, back zip pocket | <ul style="list-style-type: none"> Slightly longer back hem Detached undershorts Pique-hydrophilic finish |
|------------------|--|---|--|



HA3455
WHITE
CORE - PB

SPORT SKORT

PRIMEGREEN

- | | | | |
|------------------|---|--|--|
| TW6813S22 | <ul style="list-style-type: none"> Sizes: XS-XL Regular fit Wide elastic waist | <ul style="list-style-type: none"> Two side pockets on attached undershorts and Two back pockets UV 50+ factor | <ul style="list-style-type: none"> 15" inseam 90% REC.PES/10% EL-Tricot-hydrophilic finish |
|------------------|---|--|--|



HA3438
LEGACY BURGUNDY
CORE - PB

HA6049
BLACK
CORE
PB

HA6048
CREW NAVY
MARCH
PB

ESSENTIALS GRADIENT SKORT

PRIMEGREEN

- | | | | |
|------------------|--|--|---|
| TW6830S22 | <ul style="list-style-type: none"> Sizes: XS-XL Regular fit Wide power-mesh waist | <ul style="list-style-type: none"> Two front and two back pockets Attached undershorts 16" inseam | <ul style="list-style-type: none"> 88% REC.PES/12% EL-Single jersey-hydrophilic finish |
|------------------|--|--|---|



HA3456
PULSE LIME
CORE - PB

PRIMEBLUE SPORT SKORT

PRIMEBLUE

- | | | | |
|------------------|---|---|---|
| TW6822S22 | <ul style="list-style-type: none"> Sizes: XS-XL Regular fit Wide elastic waistband | <ul style="list-style-type: none"> 100% recycled polyester twill Two front pockets, one back pocket 16" inseam | <ul style="list-style-type: none"> Chlorine-resistant UV 50+ factor Twill-hydrophilic finish |
|------------------|---|---|---|



HA3426
ALMOST PINK
CORE - PB

H61195
WHITE
CORE
SA+

HA3460
BLACK
CORE
SA+

HA3467
CREW NAVY
CORE
SA+

HA3428
SEMI MINT
RUSH
MARCH
PB

ULTIMATE365 SOLID SKORT

PRIMEGREEN

- | | | | |
|------------------|--|---|--|
| TW6816S22 | <ul style="list-style-type: none"> Sizes: XS-XL Regular fit Wide power-mesh waist | <ul style="list-style-type: none"> Moisture absorbing Two front, two back pockets Undershorts grip tape at leg hem | <ul style="list-style-type: none"> UV 50+ factor Twill - right hand (Z)-DWR - PFC Free |
|------------------|--|---|--|



HA3404
BLACK
CORE - SA+

HA3403
CREW NAVY
CORE
SA+

HA3402
WHITE
CORE
SA+

ULTIMATE365 PRINTED SKORT

PRIMEBLUE

- | | | |
|---|--|---|
| <p>TW6815S2ZCP</p> <ul style="list-style-type: none"> • Sizes: XS-XL • Regular fit • Wide elastic waist | <ul style="list-style-type: none"> • Moisture absorbing • Front and back pockets • Undershorts grip tape at leg hem | <ul style="list-style-type: none"> • 88% REC.PES/12% EL-Single jersey-hydrophilic finish |
|---|--|---|



HF6070
ALMOST PINK
CORE - PB

HG8524
CREW NAVY
MARCH
PB

HF6072
WHITE
MAY
PB

PRIMEBLUE JOGGER

PRIMEBLUE

- | | |
|--|---|
| <p>TW6826S22</p> <ul style="list-style-type: none"> • Sizes: XS-XL • Regular fit • Wide fold-over waist, | <ul style="list-style-type: none"> • Front pockets and one back pocket • Twill-hydrophilic finish |
|--|---|



HA3473
BLACK
CORE - SA

HA3475
CREW NAVY
CORE
SA

FULL LENGTH PANT

PRIMEGREEN

- | | | |
|---|---|--|
| <p>TW6107S21IN</p> <ul style="list-style-type: none"> • Sizes: 6S-18S / 6-18 / 6L-18L • Regular fit • Belt loops on waist | <ul style="list-style-type: none"> • Stretchy fabric • Front and back pockets • Available in leg lengths | <ul style="list-style-type: none"> • 92% REC.PES/8% EL-Twill-DWR - PFC Free |
|---|---|--|



GL6693
BLACK
CORE - SA

GL6689
CREW NAVY
CORE
SA

GL6695
WHITE
CORE
SA

HEAT.RDY LEGGING

PRIMEGREEN

- | | | |
|---|--|---|
| <p>TW6814S22</p> <ul style="list-style-type: none"> • Sizes: XS-XL • Tight fit • Wide elastic waist | <ul style="list-style-type: none"> • Side pockets • UV 50+ factor • Seven-eighth length | <ul style="list-style-type: none"> • Mid rise • 79% REC.PES/21% EL-Interlock-hydrophilic finish |
|---|--|---|



HA6051
BLACK
CORE - PB

HA6056
CREW NAVY
CORE
PB

PRINTED ANKLE PANT

- | | | |
|---|---|---|
| <p>TW6819S22</p> <ul style="list-style-type: none"> • Sizes: XS-XL • Slim fit • Wide power-mesh waist | <ul style="list-style-type: none"> • Durable four-way stretch fabric • Front and back pockets • UV 50+ factor, | <ul style="list-style-type: none"> • Ankle length • 90% REC.PES/10% EL-Twill - DWR - PFC Free |
|---|---|---|



HG8523
ALMOST PINK
CORE - PB

PROVISIONAL PANT

- | | | |
|---|--|---|
| <p>TW6500F21</p> <ul style="list-style-type: none"> • Sizes: XS-XL • Regular fit • Two front pockets, one back pocket | <ul style="list-style-type: none"> • Ankle zips • Critically seam-sealed, water-repellent material | <ul style="list-style-type: none"> • Available in leg lengths • 100% PES-Taffeta-DWR - PFC Free |
|---|--|---|



GR3616
BLACK
CORE - SA

GO-TO COMMUTER PANT

PRIMEGREEN

- | | |
|---|--|
| <p>TW6826S22</p> <ul style="list-style-type: none"> • Sizes: XS-XL • Regular fit with high waist • Pull-on construction | <ul style="list-style-type: none"> • Two front pockets, one back pocket • Front pleats • Twill-DWR - PFC Free |
|---|--|



HA3487
BLACK
CORE - PB

PULLON ANKLE PANT

PRIMEGREEN

- | | | |
|---|---|--|
| <p>TW6818S22</p> <ul style="list-style-type: none"> • Sizes: XS-XL • Slim fit • Durable four-way stretch fabric | <ul style="list-style-type: none"> • Front pockets with hidden inner zips • UV 50+ factor | <ul style="list-style-type: none"> • Ankle length • 90% REC.PES/10% EL-Twill - right hand [Z]-DWR - PFC Free |
|---|---|--|



HA3408
BLACK
CORE - SA+

HA3407
CREW NAVY
CORE
SA+

HA3406
LEGACY
BURGUNDY
CORE
PB

HA3405
WHITE
CORE
SA+

SOLID 5 INCH SHORT

PRIMEGREEN

- | | | |
|---|--|--|
| <p>TW6810S21</p> <ul style="list-style-type: none"> • Sizes: 6 - 18 • Regular fit • Belt loops on waist | <ul style="list-style-type: none"> • 92% recycled polyester, 8% elastane twill • Front pockets and back pocket | <ul style="list-style-type: none"> • 92% REC.PES/8% EL-Twill-DWR - PFC Free |
|---|--|--|



GK8496
BLACK
CORE - SA

GN7156
CREW NAVY
CORE
SA

GK8495
WHITE
CORE
SA

MODERN BERMUDA SHORT

PRIMEGREEN

TW6823S22

- Sizes: XS-XL
- Slim fit
- Pull-on construction
- Durable four-way stretch fabric
- Front and back pockets
- 8.5" inseam
- Twill - right hand (Z)-DWR - PFC Free



HA3410
BLACK
CORE - SA

HA3409
CREW NAVY
CORE
SA

GO-TO SHORT

PRIMEGREEN

TW6827S22

- Sizes: XS-XL
- Regular fit with high waist
- Two front and one back pocket
- Front pleats
- 4" inseam
- Twill-DWR - PFC Free



HA3489
CREW NAVY
CORE - PB

HA3495
WHITE
CORE
PB



INCLUSIVE SIZING APPAREL
SPRING | SUMMER
2022



UPF 50 SOLID LONG SLEEVE POLO **PRIMEGREEN**

TW3821S22IN	<ul style="list-style-type: none"> Sizes: 1X-4X Regular fit Half zip with stand-up collar 	<ul style="list-style-type: none"> 88% recycled polyester, 12% elastane single jersey Soft four-way stretch fabric 	<ul style="list-style-type: none"> Moisture absorbing. UV 50+ factor Balanced weight fabric
--------------------	--	--	--



TEXTURE FULL ZIP JACKET **PRIMEGREEN**

TW4600S22IN	<ul style="list-style-type: none"> Sizes: 1X-4X Regular fit Full zip with stand-up collar 	<ul style="list-style-type: none"> Front body: 96% recycled polyester 4% elastane jacquard 	<ul style="list-style-type: none"> Back body and sleeves: 100% recycled polyester doubleknit Front pockets
--------------------	--	---	--



PRIMEBLUE DRESS **PRIMEBLUE**

TW6831S22IN	<ul style="list-style-type: none"> Sizes: 1X-4X Regular fit Quarter zip with mock neck 	<ul style="list-style-type: none"> 100% recycled polyester twill Moisture absorbing Two front and one back pocket 	<ul style="list-style-type: none"> Detached undershorts Scalloped hem
--------------------	---	--	---



SPORT PERFORMANCE SKORT **PRIMEGREEN**

TW6822S22IN	<ul style="list-style-type: none"> Sizes: 1X-4X Regular fit Wide elastic waistband 	<ul style="list-style-type: none"> 100% recycled polyester twill Two front and one back pocket Scalloped hem 	<ul style="list-style-type: none"> Undershorts with grip tape at leg hem
--------------------	---	---	---



STRETCH WOVEN JOGGER **PRIMEGREEN**

TW6829S22IN	<ul style="list-style-type: none"> Sizes: 1X-4X Regular fit, Wide elastic waist 	<ul style="list-style-type: none"> 100% recycled polyester twill Two front and one back pocket Cuffed hems
--------------------	--	---





JUNIOR APPAREL
SPRING | SUMMER
2022



PRIMEBLUE BOYS POLO SHIRT PRIMEGREEN

- TB1573S22**
- Sizes: 7Y-16Y
 - Three-button polo collar
 - Colorblocked
 - 100% REC.PES:Doubleknit:120:



HA5028
CREW NAVY S21/
BLUE RUSH S22/WHITE
CORE

HA6447
BLACK/PULSE LIME S22/WHITE
CORE

BOYS PIQUE POLO SHIRT PRIMEGREEN

- TB1572S22**
- Sizes: 7Y-16Y
 - Regular fit
 - Three-button polo collar
 - Slightly longer back hem
 - 100% REC.PES:Pique:180:



HA4978
WHITE
CORE

HA4977
BLUE RUSH S22
CORE

BOYS QUARTER ZIP HEATHER PULLOVER PRIMEGREEN

- TB4006S21**
- Sizes: 7Y-16Y
 - Regular fit
 - Half zip with stand-up collar
 - 50+ UV factor
 - 100% REC.PES:Pique:172:



GU3928
CREW NAVY S21
CORE

GQ2416
GREY THREE MEL.
CORE

BOYS GRAPHIC POLO SHIRT PRIMEGREEN

- TB1571S22CF**
- Sizes: 7Y-16Y
 - Three-button polo collar,
 - adidas graphic on front body
 - 100% REC.PES:Doubleknit:170:



HC0250
SEMI MINT RUSH S22/
BLUE RUSH S22/WHITE
CORE

HC0251
BLACK/PULSE LIME S22/WHITE
CORE

THREE STRIPE POLO PRIMEGREEN

- TB3203S20**
- Sizes: 7Y-16Y
 - Badge of Sport Logo on Left Sleeve
 - Badge of Sport on back
 - UPF 50+ sun blocking
 - 100% REC.PES:Pique:172



FP9360
COLLEGIATE RED
CORE

GR1286
CREW NAVY S21
CORE

HF4437
PULSE LIME S22
CORE

FP9361
TRACE ROYAL
S18
CORE

FI8673
WHITE
CORE

HF3092
BLACK
CORE

PROVISIONAL RAIN JACKET PRIMEGREEN

- TB5001S20**
- Sizes: 7Y-16Y
 - 2 front and 2 side zip pockets
 - Badge of Sport on back
 - Critically seam sealed
 - Three Stripe Branding on right sleeve
 - Water repellant material
 - Wind and water resistant
 - 100% REC.PES:Poplin:123



FI8661
BLACK
CORE

BOYS FLAG POLO SHIRT PRIMEGREEN

- TB1574S22**
- Sizes: 7Y-16Y
 - Three-button polo collar
 - All-over graphic
 - 88% REC.PES/12% EL:Single jersey:170



HD4953
WHITE
CORE

HD4952
BLUE RUSH S22
CORE

BOYS ANORAK PULLOVER PRIMEGREEN

- TB4010S22**
- Sizes: 7Y-16Y



HA7929
CREW NAVY S21
CORE

HA7930
BLACK
CORE

BOYS ULTIMATE 365 ADJUSTABLE SHORTS PRIMEGREEN

- TM1921F21**
- Sizes: 7Y-16Y
 - Regular fit
 - Drawcord waist with belt loops
 - Elastic waistband on back
 - Front pockets and one back pocket
 - Flat front construction
 - UV 50+ factor
 - 100% REC.PES:Twill - right hand (Z):152



HA6449
CREW NAVY S21
CORE

HA7932
GREY THREE F17
CORE

HA7931
BLACK
CORE

BOYS ULTIMATE ADJUSTABLE PANTS PRIMEGREEN

- | | | |
|--|---|--|
| <p>TB6316S22</p> <ul style="list-style-type: none"> • Sizes: 7Y-16Y • Regular fit • Drawcord waist with belt loops | <ul style="list-style-type: none"> • Elastic waistband on back • Front pockets and one back pocket • Flat front construction | <ul style="list-style-type: none"> • UV 50+ factor • 100% REC.PES:Twill - right hand (Z):152 |
|--|---|--|



HA8005
BLACK
CORE

HG3791
BLUE RUSH
CORE

PRIMEBLUE GIRLS POLO SHIRT PRIMEGREEN

- | | |
|--|--|
| <p>TM1876S21</p> <ul style="list-style-type: none"> • Sizes: 7Y-16Y • Regular fit • Two-button polo collar | <ul style="list-style-type: none"> • Colorblocked • 100% REC.PES:Doubleknit:120: |
|--|--|



HA6456
BLACK
CORE

HA6457
SEMI MINT RUSH S22
CORE

GIRLS PERFORMANCE SHORT SLEEVE POLO PRIMEGREEN

- | | |
|--|--|
| <p>TM1924F21</p> <ul style="list-style-type: none"> • Sizes: 7Y-16Y • Regular fit • Three-button polo collar | <ul style="list-style-type: none"> • Cap sleeves • UV 50+ factor • 100% REC.PES:Interlock:150 |
|--|--|



GQ2449
CREW NAVY S21
CORE

GQ2449
CREW NAVY S21
CORE

YOUTH UNISEX JOGGER PRIMEGREEN

- | | | |
|--|--|--|
| <p>TB66319S21</p> <ul style="list-style-type: none"> • Sizes: 7Y-16Y • Regular fit • Elastic waist with drawcord | <ul style="list-style-type: none"> • Soft feel • Knee darts • Elastic cuffs | <ul style="list-style-type: none"> • 100% REC.PES:Plain weave:119 |
|--|--|--|



GQ2473
CREW NAVY S21
CORE

GIRLS COLORBLOCK POLO SHIRT PRIMEGREEN

- | | |
|---|---|
| <p>TG1562S22</p> <ul style="list-style-type: none"> • Sizes: 7Y-16Y • Regular fit • Half zip with low stand-up collar | <ul style="list-style-type: none"> • Contrast shoulder panels • 100% REC.PES:Doubleknit:170 |
|---|---|



HA6458
SEMI MINT RUSH S22
CORE

GIRLS ANORAK JACKET PRIMEGREEN

- | | | |
|--|--|---|
| <p>TM1919F21</p> <ul style="list-style-type: none"> • Sizes: 7Y-16Y • Full zip with hood • Two front pockets | <ul style="list-style-type: none"> • Raglan sleeves • Cuffed sleeves • Colorblocked | <ul style="list-style-type: none"> • 100% REC.PES:Plain weave:80 |
|--|--|---|



HA8016
BLACK/WHITE
CORE

PROVISIONAL RAIN PANT PRIMEGREEN

- | | | |
|---|--|--|
| <p>TM1934F21</p> <ul style="list-style-type: none"> • Sizes: 7Y-16Y • WIND.RDY • Adjustable waistband | <ul style="list-style-type: none"> • Critically seam sealed • Draw string on the waist • Draw string on the waist | <ul style="list-style-type: none"> • Front Pockets and one back pocket • 100% REC.PES:Poplin:123 |
|---|--|--|



F18662
GREY THREE F17
CORE

GIRLS SLEEVELESS POLO SHIRT PRIMEGREEN

- | | |
|--|---|
| <p>TG1535S21</p> <ul style="list-style-type: none"> • Sizes: 7Y-16Y • Regular fit • Three-button polo collar | <ul style="list-style-type: none"> • UV 50+ factor • 100% REC.PES:Interlock:150 |
|--|---|



HA8011
PULSE LIME S22/WHITE
CORE

GIRLS GOLF DRESS PRIMEGREEN

- | | | |
|---|---|---|
| <p>TG6340S22</p> <ul style="list-style-type: none"> • Sizes: 7Y-16Y • Regular fit • V-neck with polo collar | <ul style="list-style-type: none"> • Back neck cutout • Small zip pocket on back waist • Undershorts | <ul style="list-style-type: none"> • 100% REC.PES:Doubleknit:170 |
|---|---|---|



HA8014
BLACK/WHITE
CORE

RUFFLED SKORT

PRIMEGREEN

TG6313S20

- Sizes: 7Y-14Y
- 88% REC.PES/12% EL:Single jersey:170



F18683
WHITE
CORE

FK0541
BLACK
CORE



TEAMWEAR
SPRING | SUMMER
2022



PERFORMANCE POLO (SUBJECT TO AVAILABILITY)

PRIMEGREEN

- TM1377S21
- Sizes: XS-2XL
 - Performance fabric
 - Moisture wicking
 - 100% REC.PES:Pique:172



G03115
BRIGHT ORANGE
CORE - SA

GQ3116
BRIGHT YELLOW
CORE SA

GQ3117
CLEAR SKY
CORE SA

GQ3119
COLLEGIATE
ROYAL
CORE SA

GQ3120
GREEN
CORE SA

GQ3121
REAL MAGENTA
CORE SA

GQ3123
SOLAR PINK
CORE SA

GQ3127
GREY THREE
CORE SA

GQ3122
COLLEGIATE
NAVY
CORE SA+

GQ3114
BLACK
CORE SA+

GQ3118
COLLEGIATE RED
CORE SA+

GQ3124
WHITE
CORE SA+

PERFORMANCE SHORT SLEEVE POLO

PRIMEGREEN

- TW3601S21
- Sizes: XS-XXL
 - Performance fabric
 - Moisture wicking
 - 100% REC.PES:Pique:172:



GT7932
BRIGHT ORANGE
CORE

GT7936
BRIGHT YELLOW
CORE

GT7931
CLEAR SKY
CORE

GT7930
COLLEGIATE
ROYAL
CORE

GT7934
GREEN
CORE

GV4713
MAGENTA
CORE

GT7937
SOLAR PINK
CORE

GV4712
GREY THREE
CORE

GT7928
COLLEGIATE
NAVY
CORE

GT7927
BLACK
CORE

GT7929
COLLEGIATE RED
CORE

GT7926
WHITE
CORE

THREE STRIPE POLO

PRIMEGREEN

- TM1499S20
- 100% REC.PES:Pique:172:



HF3092
BLACK
CORE

FP9360
COLLEGIATE RED
CORE

GR1286
CREW NAVY S21
CORE

FI8673
WHITE
CORE

BOYS QUARTER ZIP PULLOVER

PRIMEGREEN

- TB4006S21
- Sizes: 7Y-16Y
 - Badge of Sport Logo on Left Sleeve
 - Badge of Sport on back
 - UPF 50+ sun blocking
 - 100% REC.PES:Pique:172



GQ2416
GREY THREE MEL.
CORE

GU3928
CREW NAVY S21
CORE

CLUB QUARTER ZIP

PRIMEGREEN

- TM4424S21
- Sizes: XS-2XL
 - Golf Vest For Cooler Weather
 - Regular Fit
 - Soft, Stretchy Feel



GM4299
CREW NAVY
CORE - SA+

GM4298
BLACK
CORE SA+

GL0141
WHITE
CORE SA+

GM4127
TEAM POWER
RED
CORE SA

TEXTURE FULL ZIP JACKET

PRIMEGREEN

- TW4600S22
- Sizes: XS-XXL
 - Soft mid weight fabric
 - Center front: full zip
 - Soft and best for everyday wear
 - Thumbholes to keep sleeves in place
 - Zip mock collar
 - Doubleknit-hydrophilic finish



HA3395
BLACK
CORE

HA3394
CREW NAVY
CORE

HA3400
WHITE
CORE



FOOTWEAR
SPRING | SUMMER
2022



TOUR360 INFINITY

NEW LQ801 **SIZES:** 6.5 - 11, 12

RECYCLED CONTENT



- Lace closure
- Leather upper
- Leather lining
- Boost midsole
- TPU outsole



GV7245
FTWRWHITE/FTWRWHITE/SILVERMET
AV: 1/2/2022



GV7244
FTWRWHITE/COREBLACK/BLUERUSH
AV: 1/2/2022



GV7247
FTWRWHITE/SILVERMET/TEANAVBLU
AV: 1/2/2022

TOUR360 XT-SL 2

KZ102 **SIZES:** 6.5 - 11, 12

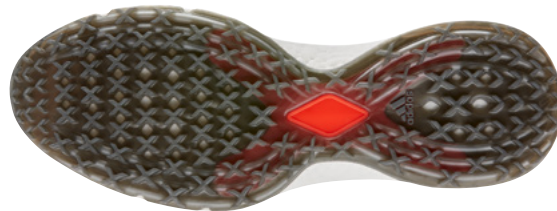
RECYCLED CONTENT



- Regular fit
- Lace closure
- Leather upper and lining
- Supportive 360Wrap lockdown
- Golf shoes with tour-level performance and stability
- Responsive Boost midsole



FW5927
COREBLACK/IRONMET/COREBLACK



EG4872
FTWRWHITE/FTWRWHITE/DKSILVMET

TOUR360 XT-SL TEX

GVK99 **SIZES: 6.5 - 11, 12**

- Regular fit
- Lace closure
- Knit-inspired textile upper with seamless overlays
- Waterproof upper
- Golf shoes with tour-level performance and stability
- Responsive Boost midsole
- TPU flexible ground outsole with Torsion bar and X-Traxion primary lugs



EG4876
FTWRWHITE/COREBLACK/GREY TWO



EG4877
COREBLACK/GREY FIVE/SCARLET



PERFORMANCE CLASSIC

KZ102 **SIZES: 6.5 - 11, 12**

- Regular fit
- Lace closure
- Leather and microfiber upper
- Cushioned, responsive feel
- Leather golf shoes with Boost
- Flexible Bounce midsole with responsive Boost in the heel
- Five-cleat TPU outsole



FW6273
FTWRWHITE/GOLDMET/COREBLACK



FW6275
COREBLACK/COREBLACK/GOLDMET
AV: 1/2/2022



FLOPSHOT

LOB06

SIZES: 6.5, 7.5, 8, 8.5, 9, 9.5, 10, 10.5, 11.5, 12.5

RECYCLED CONTENT



- Lace closure
- Waterproof leather upper
- Leather lining
- Boost midsole
- TPU rubber outsole



GV9668
FTWRWHITE/GOLDMET/BLUERUSH
AV: 1/2/2022



GV9669
CREWNAVY/BLUERUSH/TURBO
AV: 1/2/2022



GY8523
TANBROWN/GOLDENBEI/PULSEMINT
AV: 1/2/2022



GV9670
COREBLACK/GREYSIX/LEGACYBUR
AV: 1/2/2022

ZG21

KZ100

SIZES: 6.5 - 11, 12

RECYCLED CONTENT



- Regular fit
- Lace closure
- Soft textile upper with TPU film
- Lightweight feel
- Low-cut stable golf cleats
- Insite sockliner with Lightstrike and Boost cushioning
- TPU six-spike outsole with aggressive traction lugs



GW0215
FTWRWHITE/BLUERUSH/COREBLACK
AV: 1/2/2022



FW5545
FTWRWHITE/DKSILVMET/GREYFIVE



FW5544
COREBLACK/DKSILVMET/GREYFIVE

ZG21 MOTION

LG616

SIZES: 6.5 - 11, 12

PRIMEGREEN
MADE WITH RECYCLED MATERIALS



- Regular fit
- Lace closure
- Engineered mesh upper
- Waterproof
- INSITE© sockliner and Lightstrike cushioning
- Boost midsole
- Thintech TPU outsole
- Primegreen



G57772
CREWNAVY/FTWRWHITE/FOCUSBLUE



G57769
GREYTWO/VICTORBLU/PULSYELLO

CODECHAOS

NEW EPC15

SIZES: 6.5 - 11, 12

RECYCLED CONTENT



- Regular fit
- Lace closure
- Textile upper with a water-protective layer
- Textile lining
- Chaos Traxion outsole
- Kurim grip soft rubber hybrid spikeless outsole
- Durable Adiwear outsole
- INSITE© sockliner for fit and balance
- Fitfoam midsole
- Responsive Boost midsole
- Lightweight, stable feel
- Waterproof, windproof RAIN.RD
- Tour Performance build
- Torsion X stability bar for sure footing from the ground up



GW5341
FTWRWHITE/FTWRWHITE/CREWNAVY
AV: 1/2/2022



GW5340
FTWRWHITE/FTWRWHITE/BLUERUSH
AV: 1/2/2022



GZ6010
COREBLACK/COREBLACK/PULSELIME
AV: 1/2/2022

EQT SL

KZK61

SIZES: 6.5 - 11, 12

PRIMEGREEN
MADE WITH RECYCLED MATERIALS



- Regular fit
- Lace closure
- Mesh and synthetic upper
- Light and stable feel
- Lightweight golf shoes
- Bounce midsole and Boost in the heel
- External heel clip and spikeless Adiwear rubber outsole
- Primegreen



GZ3895
NONDYED/COREBLACK/PULSELIME
AV: 1/2/2022



FW6306
FTWRWHITE/TEAROYBLU/GREY TWO



FW6303
GREYFOUR/SUBGREEN/COREBLACK



FX6631
FTWRWHITE/FTWRWHITE/GREY TWO

ADIC ZX PRIMEBLUE

LG618

SIZES: 3.5 - 11, 12

PRIMEBLUE
MADE WITH PARLEY OCEAN PLASTIC



- Regular fit
- Lace closure
- Textile upper
- Waterproof
- EVA cushioning
- Boost midsole
- Adiwear and Traxion outsole
- Primeblue



FZ2192
FTWRWHITE/COREBLACK/ORBITINDI

S2G MID

LG002 SIZES: 6.5 - 11, 12

PRIMEGREEN
MADE WITH RECYCLED MATERIALS



- Wide fit
- Lace closure
- Mesh upper
- Waterproof
- Textile lining
- Four-spike outsole
- Adiwear, Traxion and Thintech TPU outsole



FZ1035
COREBLACK/GREYFOUR/MESA

S2G

KZK67 SIZES: 6.5 - 11, 12



- Regular fit
- Lace closure
- Leather, textile and suede upper
- Stable feel
- Low-cut golf cleats
- Ortholite sockliner with Bounce midsole cushioning
- Four-cleat rubber outsole



FW6328
FTWRWHITE/GREYONE/CREWBLUE



FW6330
COREBLACK/GREYSIX/WILDTEAL

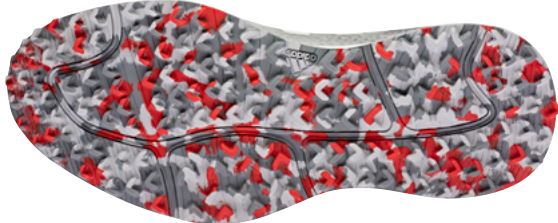
S2G SL BOA

NEW LDE94 **SIZES:** 6.5 - 11, 12

- Micro-adjustable dial-based fit system
- Waterproof textile upper
- Textile lining
- Bounce midsole
- Rubber outsole



GV9789
COREBLACK/COREBLACK/GREYSIX
AV: 1/2/2022



GV9786
GREYTWOF/TWRWHITE/GREYTHREE
AV: 1/2/2022

PRIMEGREEN
MADE WITH RECYCLED MATERIALS



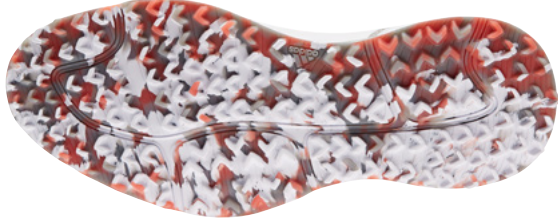
S2G SL LTHR

LDE94 **SIZES:** 6.5 - 11, 12

- Regular fit
- Lace closure
- Leather, synthetic and textile upper
- Stable feel
- Low-cut golf shoes
- Ortholite sockliner with Bounce midsole cushioning
- S2G spikeless rubber outsole



FX4336
COREBLACK/GREYFIVE/GREENOXID



FX4333
FTWRWHITE/GREYONE/CREWRED

RECYCLED CONTENT



S2G SL

NEW LQB40 **SIZES:** 6.5 - 11, 12

PRIMEGREEN
MADE WITH RECYCLED MATERIALS



- Lace closure
- Textile upper
- Textile lining
- Bounce midsole
- Rubber outsole



GV9792
FTWRWHITE/GREYFOUR/GREYSIX
AV: 1/2/2022



GV9793
GREYFOUR/COREBLACK/GREYSIX
AV: 1/2/2022



GV9794
ALTERBLUE/CREWNAVY/FTWRWHITE
AV: 1/2/2022

NEW LWQ05 **SIZES:** 3.5 - 11, 12

PRIMEGREEN
MADE WITH RECYCLED MATERIALS



- Wide fit
- Lace closure
- Vegan upper
- Textile lining
- Cushioned midsole
- Adiwear outsole with Traxion



GZ6968
FTWRWHITE/COREBLACK/FTWRWHITE
AV: 1/2/2022



GZ3280
FTWRWHITE/ALTERAMBE/FTWRWHITE
AV: 1/2/2022



GX3027
FTWRWHITE/CHALKYBRN/FTWRWHITE
AV: 1/2/2022



GZ6967
GREYTWO/MAGICGREY/FTWRWHITE
AV: 1/2/2022

W TOUR360 INFINITY

NEW LQ804 **SIZES: 3.5 - 8.5**

- Lace closure
- Leather upper
- Leather lining
- Boost midsole
- TPU outsole



GV9662
FTWRWHITE/FTWRWHITE/ALMOSTPNK
AV: 1/2/2022



GV7248
FTWRWHITE/SILVERMET/TURBO
AV: 1/2/2022

PRIMEGREEN
MADE WITH RECYCLED MATERIALS



W TOUR360 XT-SL

HJ577 **SIZES: 3.5 - 8.5**

- Regular fit
- Lace closure
- Leather upper
- Supportive 360Wrap lockdown
- Tour-level performance golf shoes
- Responsive full-length Boost midsole
- Rubber outsole with Torsion bar and X-Traxion primary lugs



FW5641
FTWRWHITE/WILDPINK/SILVERMET



W PERFORMANCE CLASSIC

PRIMEGREEN
MADE WITH RECYCLED MATERIALS



LDE93 SIZES: 3.5 - 8.5

- Regular fit
- Lace closure
- Leather and microfiber upper
- Cushioned, responsive feel
- Leather golf shoes with Boost
- Flexible Bounce midsole with responsive Boost in the heel
- Five-cleat TPU outsole



FX4331
COREBLACK/SILVERMET/HAZYSKY



FX4330
FTWRWHITE/SILVERMET/CREWNAVY

W ALPHAFLEX SPORT

RECYCLED CONTENT



KZP33 SIZES: 3.5 - 8.5

- Regular fit
- Lace closure
- Waterproof engineered mesh upper
- Light and comfortable feel
- Spikeless mesh golf shoes
- EVA midsole
- Green-friendly spikeless rubber outsole with X-Traxion primary lugs



FX4061
COREBLACK/GLORYGREY/FTWRWHITE



FW7483
FTWRWHITE/TECINDIGO/FTWRWHITE



FX4063
FTWRWHITE/GLORYGREY/SILVERMET

WEQT SL

KZK57

SIZES: 3.5 - 8.5

RECYCLED CONTENT



- Regular fit
- Lace closure
- Light mesh and synthetic leather upper with protective film
- Light and stable feel
- Lightweight golf shoes
- Bounce midsole and Boost in the heel
- External heel clip and spikeless Adiwear rubber outsole



FW6295
FTWRWHITE/FTWRWHITE/ACIDMINT



GX7526
FTWRWHITE/ALMOSTPNK/GREYTHREE
AV: 1/2/2022

W SUMMERVENT

NEW

LQB35

SIZES: 3.5 - 8.5

PRIMEGREEN
MADE WITH RECYCLED MATERIALS

- Lace closure
- Engineered mesh upper
- Textile lining
- Bounce midsole
- Rubber outsole



GV9765
COREBLACK/COREBLACK/MINTRUSH
AV: 1/2/2022



GV9764
WONDERMAU/WONDERMAU/MAGICGREY
AV: 1/2/2022



GZ3281
FTWRWHITE/FTWRWHITE/ALMOSLIME
AV: 1/2/2022

W RESPONSE BOUNCE 2

LDE93 SIZES: 3.5 - 8.5



- Regular fit
- Lace closure
- Microfiber synthetic leather and mesh upper
Textile lining
- Six-cleat Traxion outsole
- Cushioned Cloudfoam midsole
- Flexible Bounce midsole cushioning
- Stable feel



F36134
FTWRWHITE/SILVERMET/GREYTW

W S2G MID

KZK58 SIZES: 3.5 - 8.5

RECYCLED CONTENT



- Regular fit
- Lace closure
- Textile, synthetic leather and suede upper
with PU film
- Waterproof, windproof RAIN.RDY
- Mid-cut golf cleats with boot laces
- Ortholite sockliner with Bounce midsole cushioning
- Four-cleat rubber outsole



FW6298
COREBLACK/DKSILVMET/WILDPINK

W S2G SL

NEW LVC61 **SIZES:** 3.5 - 8.5

PRIMEGREEN
MADE WITH RECYCLED MATERIALS



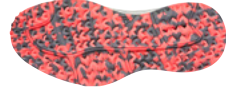
- Lace closure
- Textile upper
- Textile lining
- Bounce midsole
- Rubber outsole



GZ3910
FTWRWHITE/FTWRWHITE/SEMMINTRUSH
AV: 1/2/2022



GZ3911
GREYTHREE/SILVERMET/ALMOSTLIME
AV: 1/2/2022



GZ3912
FTWRWHITE/FTWRWHITE/GREY2WO
AV: 1/2/2022

W ADICROSS RETRO

NEW LVD35 **SIZES:** 3.5 - 8.5



- Lace closure
- Leather upper
- Leather lining
- Cushioned midsole
- Rubber outsole



GV8321
WHITETINT/PULSEAMBE/ECRUTINT
AV: 1/2/2022



GV8322
COREBLACK/MAGICLILA/FTWRWHITE
AV: 1/2/2022



GV8323
ALMOSTPNK/COREWHITE/ALMOSTPNK
AV: 1/2/2022

W ADICROSS RETRO GREEN

NEW LW006 SIZES: 3.5 - 8.5

- Lace closure
- Waterproof vegan upper
- Textile lining
- Cushioned midsole
- Adiwear outsole



GZ3227
CHALWHITE/ALMOSTPNK/ALUMINA
AV: 1/2/2022



GZ6969
FTWRWHITE/COREBLACK/FTWRWHITE
AV: 1/2/2022

PRIMEGREEN
MADE WITH RECYCLED MATERIALS



JR S2G SL

NEW LQB47 SIZES: 1, 2 - 6



- Lace closure
- Textile upper
- Textile lining
- Bounce midsole
- Rubber outsole



GV9787
FTWRWHITE/LGTPURPLE/GREYONE
AV: 1/2/2022



GV9785
FTWRWHITE/GREYFOUR/GREYSIX
AV: 1/2/2022

JR TOUR360 INFINITY

NEW LQB47 SIZES: 1, 2 - 6

RECYCLED CONTENT

- Lace closure
- Synthetic upper
- Textile lining
- Bounce midsole
- Rubber outsole



GV9666
COREBLACK/FTWRWHITE/PULSELIME
AV: 1/2/2022



GV9665
FTWRWHITE/IRONMET/BLUERUSH
AV: 1/2/2022

ACCESSORIES
SPRING | SUMMER
2022



MENS TOUR SNAPBACK

PRIMEGREEN

TXM401S22

- Size: OSFM
- 100% recycled polyester doubleknit
- adidas Badge of Sport golf hat
- Pre-curved brim
- Adjustable snapback closure
- AEROREADY Moisture-absorbing sweatband
- Six-panel construction



TOUR SNAPBACK CRST

PRIMEGREEN

TXM401S22CRST

- Size: OSFM
- 100% polyester plain weave
- Crestable golf hat
- Pre-curved brim
- Adjustable snapback closure
- AEROREADY Moisture-absorbing sweatband
- Six-panel construction



GOLF TOUR HAT THREE STRIPES

PRIMEGREEN

TXM401S22

- Size: OSFM
- 100% recycled polyester doubleknit
- adidas Badge of Sport golf hat
- Pre-curved brim
- Adjustable snapback closure
- AEROREADY Moisture-absorbing sweatband
- Six-panel construction



TOUR PRINT HAT

PRIMEGREEN

TXM400S22

- Size: OSFM
- 88% recycled polyester, 12% elastane plain weave
- Moisture absorbing
- Pre-curved brim
- Adjustable snapback closure
- Six-panel construction



GOLF PRINTED HAT

PRIMEGREEN

TXM400S22

- Size: OSFM
- 86% recycled polyester, 14% elastane plain weave
- Pre-curved brim
- Adjustable snapback closure
- adidas Badge of Sport Golf logo
- Six-panel construction



GOLF PATCH SNAPBACK

PRIMEGREEN

TM189AS21

- Size: OSFM
- 97% recycled polyester, 3% elastane plain weave
- Lightweight fabric
- Pre-curved brim with rope detail
- Adjustable snapback closure
- Five-panel construction



PLAYERS HAT

- | | |
|---|--|
| <p>TXM3094S22</p> <ul style="list-style-type: none"> • Size: OSFM • 100% cotton twill • Rope detail on brim | <ul style="list-style-type: none"> • Adjustable snapback closure • Five-panel construction • Better Cotton Initiative |
|---|--|



HA9203
CREW NAVY



HA9202
WHITE

FOR THE OCEANS HAT

PRIMEBLUE

- | | | |
|---|--|--|
| <p>TXM3099S22</p> <ul style="list-style-type: none"> • Size: OSFM • 100% recycled polyester twill • Pre-curved brim | <ul style="list-style-type: none"> • Adjustable snapback closure • Six-panel construction • 3D patch on front | <ul style="list-style-type: none"> • All-over print |
|---|--|--|



HC3099
WHITE



HA9204
BLACK

MASTERS HAT

RECYCLED CONTENT

- | | |
|--|--|
| <p>TXM4006S22</p> <ul style="list-style-type: none"> • Size: OSFM • Shell: 100% recycled polyester doubleknit • Sweatband: 55% recycled polyester, 45% nylon mock eyelet | <ul style="list-style-type: none"> • Pre-curved brim • Snapback adjuster • Six-panel construction |
|--|--|



HC3125
WHITE

TAP THAT IN HAT

RECYCLED CONTENT

- | | |
|--|---|
| <p>TXM4015S22</p> <ul style="list-style-type: none"> • Size: OSFM • Shell: 55% recycled polyester, 45% nylon mock eyelet • Sweatband: 100% recycled polyester doubleknit | <ul style="list-style-type: none"> • Pre-curved brim • Snapback closure • Six-panel construction |
|--|---|



HA1267
GREY THREE MEL

LINKS TRUCKER

RECYCLED CONTENT

- | |
|---|
| <p>TXM4041S22</p> <ul style="list-style-type: none"> • Size: OSFM |
|---|



HC1206
WHITE

GOLF UPF SUN HAT

PRIMEGREEN

- | | | |
|---|---|---|
| <p>TXM4013S22</p> <ul style="list-style-type: none"> • Size: S/M, L/XL • 100% recycled polyester dobby • Moisture absorbing | <ul style="list-style-type: none"> • Wide all-around brim • Drawcord with toggle • adidas Badge of Sport Golf logo | <ul style="list-style-type: none"> • UV 50+ factor |
|---|---|---|



H57160
GREY TWO

BOONIE GOLF HAT

PRIMEGREEN

TXM3098S22

- Size: OSFM
- 84% recycled polyester, 16% elastane ripstop
- Moisture absorbing
- Pre-curved brim
- Hook-and-loop back closure



HA9246
BLACK

RAIN.RDY BUCKET

PRIMEGREEN

TM1894S21

- Size:



GV2686
BLACK

GOLF PERFORMANCE HAT CRESTABLE

PRIMEGREEN

TM1894S21

- Size: OSFM
- One size fits most
- 100% recycled polyester plain weave
- Pre-curved brim
- Adjustable snapback closure
- Six-panel construction



HA9269
TEAM ROYAL BLUE

HA9263
WHITE

HA9264
BLACK

HA9267
GREY THREE

HA9265
TEAM NAVY BLUE

HA9268
TEAM COLLEG RED

GOLF TOUR VISOR

PRIMEGREEN

TXM4002S22

- Size: OSFM
- 84% recycled polyester, 16% elastane ripstop
- Moisture absorbing
- Pre-curved brim
- Hook-and-loop back closure



HA9250
BLACK

HA9248
WHITE

GOLF PERFORMANCE HAT

PRIMEGREEN

TM1894S21

- Size: OSFM
- 100% recycled polyester plain weave
- Pre-curved brim
- Adjustable snapback closure
- adidas Badge of Sport Golf logo
- Six-panel construction



HA9261
TEAM COLLEG BURGUNDY

HA9260
GREY THREE

HA9259
TEAM NAVY BLUE

HA9262
BLUE RUSH

HA9258
BLACK

HA9257
WHITE

W CRIS CROSS MESH GOLF HAT

PRIMEGREEN

TM1894S21

- Size: OSFW
- 100% recycled polyester plain weave
- Pre-curved brim
- Adjustable snapback closure
- adidas Badge of Sport Golf logo
- Six-panel construction



HA9191
BLACK

HA9193
WHITE

HA9192
ALMOST PINK

WOMENS 5 PANEL ROPE HAT

PRIMEGREEN

TXW1233S22CF • Size: OSFW



HG3621
BLACK



HG3622
WHITE



HG3623
ALMOST PINK

WOMENS NOVELTY HAT

PRIMEGREEN

TXW1234S22

- Size: OSFW
- 100% cotton twill
- Sweatband: 100% recycled polyester doubleknit

- Pre-curved brim
- Adjustable snapback closure
- Six-panel construction



HA9234
WHITE

W TOUR BADGE HAT

PRIMEGREEN

TXW1241S22

- Size: OSFW
- 100% recycled polyester plain weave
- Moisture absorbing

- Pre-curved brim
- Hook-and-loop closure
- Moisture-wicking sweatband
- Six-panel construction

• Better Cotton Initiative



H57144
WHITE



H57145
BLUE RUSH

I'M NOT THE CART GIRL HAT

TXW1250S22

- Size: OSFW"
- 100% cotton twill
- Pre-curved brim

- Adjustable strap closure
- Six-panel construction
- Embroidered front artwork

• Better Cotton Initiative



HC3119
BLACK



HC3118
WHITE



HC3120
SEMI TURBO

PONYTAIL SUN BUCKET HAT

PRIMEGREEN

TXW1220F21

• Size: OSFW



HE1614
WHITE

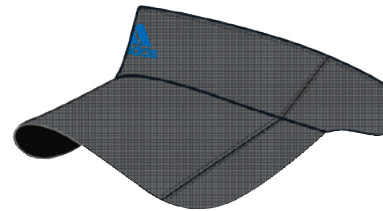
WOMENS FAIRWAY VISOR

PRIMEGREEN

TM1894S21

- Size: OSFW
- 84% recycled polyester, 16% elastane ripstop
- Moisture absorbing

- Pre-curved brim
- Adjustable strap closure with clip
- Grid mesh material



HE1615
GREY THREE



HA0585
WHITE

WOMENS HEATHERED HAT CRESTING

PRIMEGREEN

- | | | |
|---|--|--|
| <p>TXW1213S21CRST</p> <ul style="list-style-type: none"> • Size: OSFM • 100% recycled polyester doubleknit • adidas Badge of Sport golf hat | <ul style="list-style-type: none"> • Pre-curved brim • Adjustable snapback closure • AEROREADY Moisture-absorbing sweatband | <ul style="list-style-type: none"> • Six-panel construction |
|---|--|--|



HA9230
BLACK/BLACK

GJ7202
WHITE/WHITE

HA9231
BLUE RUSH/WHITE

BRAIDED STRETCH

- | | |
|--------------------------|--|
| <p>TXM2072S21</p> | <ul style="list-style-type: none"> • Size: S/M,M/L,L/XL |
|--------------------------|--|



GQ6886
BLACK



GQ6885
GREY THREE



GQ6884
CREW NAVY

UNIVERSAL WEB BELT

- | | |
|---|---|
| <p>TXB1047S22</p> <ul style="list-style-type: none"> • Size: OSFM • 100% recycled polyester plain weave • Gray and white reversible strap | <ul style="list-style-type: none"> • Cut-to-size customization • Adjustable clamp closure with embossed adidas Badge of Sport |
|---|---|



H57143
WHITE

GOLF 3 STRIPE TOUR BELT

- | | | |
|---|--|--|
| <p>TXM2062S20</p> <ul style="list-style-type: none"> • Dimensions: 1.5" x 48" (cut to size) • 100% coated polyurethane • Reversible | <ul style="list-style-type: none"> • Removable plaque-style adjustable metal clamp with raised 3-Stripes • Side A: woven | <ul style="list-style-type: none"> • Side B: knit |
|---|--|--|



HA9225
CREW NAVY



FI3130
GREY THREE



FI3129
BLACK

GOLF STRETCH HEATHER WEB BELT REVERSIBLE

- | | |
|----------------------------|--|
| <p>TXM2063S21CF</p> | <ul style="list-style-type: none"> • Size: OSFM |
|----------------------------|--|



GQ8439
GREY THREE



GQ8437
BLACK



GQ8438
CREW NAVY

GOLF REVERSIBLE WEB BELT

- | | |
|--|---|
| <p>TXM4003S22</p> <ul style="list-style-type: none"> • Size: OSFM • Dimensions: 1.5" x 48" • 100% recycled polyester plain weave | <ul style="list-style-type: none"> • Adjustable clamp closure with raised adidas Badge of Sport • Reversible strap • Cut-to-size customization |
|--|---|



HA9187
CREW NAVY



H65643
PULSE LIME



HA9189
BLUE RUSH



HA9188
GREY THREE



HA9186
BLACK

TOUR CREW

PRIMEGREEN

TXM3090S21

- Size: 6.5 - 8, 8.5-11, 12-14
- Crew length
- 100% recycled polyester

- Soft feel
- Cushioned crew-length golf touring socks
- Supportive mid-foot compression



GJ7590
BLACK/SCARLET



GJ7592
WHITE/BLACK

TOUR ANKLE

PRIMEGREEN

TXM3089S21

- Size: 6.5 - 8, 8.5-11, 12-14
- Ankle length
- 100% recycled polyester

- Soft feel
- Cushioned ankle-length golf socks
- Supportive mid-foot compression



GJ7587
WHITE/BLACK

6 PK LOWCUT

PRIMEGREEN

TXM3086S21

- Size: 6.5 - 8, 8.5-11, 12-14
- Low-cut length
- 81% recycled polyester, 19% elastane

- Soft feel
- Six-pack of low-cut golf socks
- Supportive mid-foot compression



GJ7588
WHITE

3 PK CREW

PRIMEGREEN

TXM3085S21

- Size: 6.5 - 8, 8.5-11, 12-14
- Crew length
- 81% recycled polyester, 19% elastane

- Soft feel
- Three-pack of crew golf socks
- Supportive mid-foot compression



GJ7437
GREY THREE F17



GJ7435
WHITE

3 PK ANKLE

PRIMEGREEN

TXM3084S21

- Size: 6.5 - 8, 8.5-11, 12-14
- Ankle length
- 81% recycled polyester, 19% elastane

- Soft feel
- Three-pack of ankle golf socks
- Supportive mid-foot compression



GJ7332
GREY THREE F17



GJ7330
WHITE

3 PK LOWCUT

PRIMEGREEN

TXM3083S21

- Size: 6.5 - 8, 8.5-11, 12-14
- Low-cut length
- 81% recycled polyester, 19% elastane

- Soft feel
- Three-pack of low-cut golf socks
- Supportive mid-foot compression



GJ7327
WHITE



GJ7329
GREY THREE F17

BASIC CREW

PRIMEGREEN

TXM3082S21

- Size: 6.5 - 8, 8.5-11, 12-14
- Crew length
- 81% recycled polyester, 19% elastane

- Soft feel
- Crew-length golf socks
- Supportive mid-foot compression



GJ7237
BLACK



GJ7236
WHITE

PERFORMANCE GOLF SOCK

PRIMEGREEN

TXW1235S22

- Size: 3 - 5.5, 6 - 8
- No-show length
- Ribbed cuffs

- 56% recycled polyester, 41% recycled cotton, 2% elastane, 1% nylon
- Compression arch support
- Toe and heel padding



HA9179
WHITE



HA9184
BLACK

W COMFORT LOW 3 PACK

PRIMEGREEN

TXW1238S22

- Size: 3 - 5.5, 6 - 8
- Ankle length
- Three pairs per pack

- 56% recycled polyester, 41% recycled cotton, 2% elastane, 1% nylon
- Arch support
- Cushioned toe and heel



HA9182
WHITE

BASIC ANKLE

PRIMEGREEN

TXM3081S21

- Size: 6.5 - 8, 8.5-11, 12-14
- Ankle length
- 81% recycled polyester, 19% elastane

- Soft feel
- Ankle-length golf socks
- Supportive mid-foot compression



GJ7233
WHITE



GJ7234
BLACK

WOMENS COMFORT LOW GOLF SOCK

PRIMEGREEN

TXW1236S22

- Size: 3 - 5.5, 6 - 8
- Ankle length
- Ribbed cuffs

- Cushioned toe and heel
- 56% recycled polyester, 41% recycled cotton, 2% elastane, 1% nylon



HA9176
WHITE

GOLF PREMIUM BACKPACK

RECYCLED CONTENT

TXM6046S20

- One Size
- Dimensions: 18.75" x 7" x 12.5"
- 100% recycled polyester plain weave
- Front zip pocket
- Side zip pockets; Padded laptop sleeve
- Adjustable shoulder straps with chest strap
- Air mesh back



FI3128
BLACK

GOLF DUFFLE BAG

RECYCLED CONTENT

TXM6044S20

- One Size
- 100% recycled polyester plain weave
- Two-way zip
- Side zip pocket
- Slip-in mesh pocket
- Adjustable shoulder strap with movable pad
- Dual carry handles with grip



FI3021
BLACK

GOLF SHOE BAG

RECYCLED CONTENT

TXM6048S20

- One Size
- Dimensions: 14" x 4.75" x 8"
- Zip closure
- Main: 100% polyester oxford; Front pocket: 100% recycled polyester plain weave
- Front zip pocket
- Carry loop on top



GT8354
BLACK

GOLF MEDIUM BACKPACK

RECYCLED CONTENT

TXM6045S20

- One Size
- Dimensions: 19.5" x 8.5" x 13.5"
- 100% recycled polyester plain weave
- Two front zip pockets
- Mesh side pockets; Padded laptop sleeve
- Adjustable shoulder straps with chest strap
- Air mesh back



FI3119
BLACK

GOLF GYM BAG

RECYCLED CONTENT

TXM6042S20

- One Size
- Dimensions: 14.5" x 18.5"
- Drawcord closure
- Top part: 100% polyester oxford; Bottom part: 100% recycled polyester plain weave
- Webbing carry handle



FI3124
BLACK

PACKABLE BACKPACK

RECYCLED CONTENT

RAM3009S22

- One Size



HA3166
BLACK

LEATHER GLOVE

RAM5004S21

- Size: L,S,L,M,L,M,L,LL,LXL
- Premium Cabretta leather offers a soft touch and a hand-hugging fit.

- Soft flap closure provides a secure and contoured fit.
- Material: Leather - Contains non-textile parts of animal origin



GK2957
WHITE

ADITECH 22 GLOVE

RAM5002S22

- Size: L,S,L,M,L,M,L,LL,LXL,RS,RM,RML,RL,RXL
- Unique pattern designed to provide maximum flexibility and adjust to any hand-shape or a smooth swing

- Soft synthetic leather provides a reassuringly comfortable fit
- Suede-like synthetic thumb and patch reinforces palm durability and comfort.



HA5864
WHITE/BLACK

NON SLIP GLOVE

RAM5001S22

- Size: L,S,L,M,L,M,L,LL,LXL
- Strategically placed synthetic leather retains steady grip-power on both hand and club even when wet

- Unique pattern designed to provide flexibility and give a better feeling grip
- Soft suede-like synthetic leather for a comfortable fit



HA5866
WHITE/BLACK

LADIES L&G GLOVE

RAM5001S21

- Size: L,S,L,M,L,M,L,LL
- Soft Synthetic leather provides a comfortable fit

- Stretch knit strategically placed on knuckles for better flexibility and movement

- Ergonomic angled tab offers a secure and comfortable fit and support



GL8789
WHITE

NECK BUFF UPF

TM1894S21

- Size: OSFM
- 74% recycled polyester, 19% cotton, 7% elastane single jersey

- Top and bottom cuffs
- adidas Badge of Sport logo
- UV 50+ factor

PRIMEGREEN



HD4807
GREY THREE

PLAYERSTOWEL

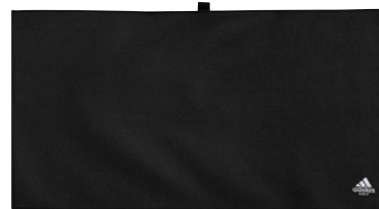
TM1894S21

- One Size
- Dimensions: 16" x 30"
- 100% polyester towel

- Waffle texture
- Super-absorbent
- Loop on top center

- adidas Badge of Sport Golf logo

PRIMEGREEN



HA9175
BLACK

THINTECH 20 PCS CLEAT PACK

TBC	<ul style="list-style-type: none"> • One size • New generation low profile thintech EXP cleat design 	<ul style="list-style-type: none"> • Traction/stability – 75% increase in leg tip surface area providing increased stability, traction, cleat durability and reduced green disruption 	<ul style="list-style-type: none"> • Lightweight – PINS IV system, coupled with the new thintech EXP cleat design, provides a 15% lighter system.
-----	--	--	--



BC5626
BLACK

BC5627
WHITE

YOUTH PERFORMANCE BRANDED HAT

PRIMEGREEN

TXB1045S22	<ul style="list-style-type: none"> • Size: OSFY • One size fits youth • 100% recycled polyester plain weave 	<ul style="list-style-type: none"> • Pre-curved brim • Adjustable snapback closure • adidas Badge of Sport Golf logo 	<ul style="list-style-type: none"> • Six-panel construction
------------	--	---	--



H57149
CREW NAVY

H57147
BLACK

Y NOVELTY HAT

TXB1046S22	<ul style="list-style-type: none"> • Size: OSFY • 100% cotton twill • Adjustable snapback closure 	<ul style="list-style-type: none"> • Dimensional patch on front • Five-panel construction • Better Cotton Initiative
------------	--	---



HA1269
WHITE

THINTECH 400 PCS CLEAT BOWL

TBC	<ul style="list-style-type: none"> • One size • New generation low profile thintech EXP cleat design 	<ul style="list-style-type: none"> • Traction/stability – 75% increase in leg tip surface area providing increased stability, traction, cleat durability and reduced green disruption 	<ul style="list-style-type: none"> • Lightweight – PINS IV system, coupled with the new thintech EXP cleat design, provides a 15% lighter system.
-----	--	--	--



BC5622
BLACK

YOUTH PERFORMANCE CRESTABLE HAT

PRIMEGREEN

TXB1045S22B	<ul style="list-style-type: none"> • Size: OSFY • 100% recycled polyester plain weave • Pre-curved brim 	<ul style="list-style-type: none"> • Adjustable snapback closure • Six-panel construction
-------------	--	---



H57140
WHITE

YOUTH 3 STRIPE GOLF BEANIE

PRIMEGREEN

TXB1042F21	<ul style="list-style-type: none"> • Size: OSFY
------------	--



GU1506
CREW NAVY

MEN'S SIZE CHART - TOPS

	XS	S	M	L	XL	2XL
Chest	31 - 33"	34 - 37"	37 - 40"	40 - 44"	44 - 48"	48 - 52"
Hip	32 - 34"	35 - 37"	37 - 40"	40 - 44"	44 - 48"	48 - 51"
EU	46"	48"	50"	52"	54"	56"

WOMEN'S SIZE CHART - TOPS

	XS	S	M	L	XL
Chest	30 - 32"	33 - 35"	36 - 37"	38 - 40"	41 - 43"
Hip	34 - 36"	37 - 38"	39 - 41"	42 - 43"	44 - 46"
UK	6 - 8	8 - 10	10 - 12	12 - 14	16 - 18
EU	34	36	38	40	42
France	36	38	40	42	44
Italy	40	42	44	46	48

WOMEN'S SIZE CHART - BOTTOMS

UK	6	8	10	12	14	16	18
EU	32	34	36	38	40	42	44
France	34	36	38	40	42	44	46
Italy	38	40	42	44	46	48	50

HOW TO MEASURE HEIGHT

1 - CHEST:

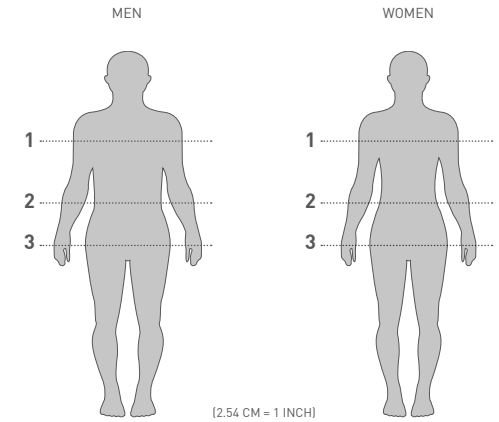
Measure around the fullest part of the bust, keeping the tape parallel to the floor.

2 - WAIST:

Measure around the narrowest point, keeping the tape parallel to the floor.

3 - HIP:

Stand with feet together and measure around the fullest point of the hip, keeping the tape parallel to the floor.



CHOOSING THE RIGHT SIZE

In cases where your measurements are between two sizes, go with the smaller size for a tighter fit and the larger size for a looser fit.

PANT FIT:

If your body measurements for hip and waist result in two different suggested sizes, you're better off going with the size from your hip measurements.

TOP FIT:

If your body measurements for hip and chest result in two different suggested sizes, order the size from your chest measurement.

FOOTWEAR SIZE GUIDE

UK SIZES	US MEN	US WOMEN	CONTINENTAL EU	FRENCH	JAPAN
1	1.5	2.5	32.6	33	200
1.5	2	3	33.3	33	
2	2.5	3.5	34	34	205
2.5	3	4	34.6	35	210
3	3.5	4.5	35.3	35	215
3.5	4	5	36	36	220
4	4.5	5.5	36.6	36	225
4.5	5	6	37.3	37	230
5	5.5	6.5	38	38	235
5.5	6	7	38.6	38	
6	6.5	7.5	39.3	39	240
6.5	7	8	40	40	245
7	7.5	8.5	40.6	40	250
7.5	8	9	41.3	41	255
8	8.5	9.5	42	42	260
8.5	9	10	42.6	42	265
9	9.5	10.5	43.3	43	270
9.5	10	11	44	44	275
10	10.5	11.5	44.6	44	280
10.5	11	12	45.3	45	285
11	11.5	12.5	46	46	290
12	12.5	13.5	47.3	47	300
13	13.5	14.5	48.6	48	310
14	14.5		50	49	320

ADIDAS GOLF | TERMS & CONDITIONS | SS22

Consistent with its slogan, adidas strives to create “The Best Performance Golf Brands in the World.” We accomplish this through meaningful innovations and technologies combined with a respect for the traditions of the game. adidas prides itself on the high quality and premium image of its products and brands in the golf industry.

In order to maintain and further its quality and premium brand image adidas has set forth the following policy, as amended from time-to-time (the “Business Policy”). It is adidas’s policy to do business only with qualified accounts of its selection (“Accounts”), and upon the unilateral terms and conditions set forth below. adidas reserves the sole right to determine the Accounts with whom it will deal, the terms and conditions upon which it will deal, and may determine not to deal further with Accounts that do not meet these terms and conditions.

1. Portrayal of adidas Quality and Premium Brand Image:

An Account shall present the adidas brands and its products in a manner consistent with the premium nature of the adidas brands. All on-site and off-site communications, advertising, and other communications with consumers shall be consistent with this premium brand image and shall comply with all standards set by and under the control of adidas and communicated to the Account from time to time. At a minimum, an Account shall:

- (a) render prompt, effective and courteous service with respect to the sale of adidas products, including all services to which a retail customer of adidas products is entitled;
- (b) vigorously and aggressively encourage the retail sale of adidas products;
- (c) establish and maintain, independently and in conjunction with adidas, advertising and marketing policies that emphasize the high-quality characteristics of adidas products;
- (d) provide clean, modern and adequate retail outlet(s) necessary for proper merchandising and selling of adidas products;
- (e) attend presentations conducted by adidas sales representatives for the purpose of acquiring knowledge about the technical characteristics of adidas products;
- (f) notify adidas’s credit department in writing prior to any change in the Account’s legal organization, method of doing business or any other material matter;
- (g) employ qualified personnel who have been trained to properly service and fit the equipment, apparel, and footwear needs of golfers; and (h) cooperate with adidas with respect to periodic quality control inspections.

2. Prohibition on Misrepresentation(s):

An Account shall not in any manner misrepresent adidas or the nature and quality of adidas products, or act in any manner that tends to damage adidas’s premium brand image, reputation or goodwill. adidas will refuse to deal with any Account whose conduct is deemed detrimental to the adidas premium image, which shall be determined in the sole discretion of adidas. adidas will not deal with any Account that purchases or sells adidas products that have been altered or defaced in any way.

3. Advertising of adidas Products:

In order to protect the integrity of adidas’s trade names, trademarks, logos, artwork, trade dress, and any other intellectual property, advertising of any kind using or depicting adidas’s trade names, trade marks, logos, artwork, trade dress or any other adidas intellectual property is subject to review and approval by adidas. adidas products shall not be used in any advertising that involves predatory pricing, loss leader pricing, or bait and switch tactics. adidas reserves the right to refuse to deal and to refuse to deal further with any Account that violates this provision.

4. Account Selection / Retail Sales / Prohibition on Redistribution:

To enhance informed selection and promote its premium image, adidas only sells to selected retail Accounts for retail sale, on the express condition that such Accounts may not resell to any person or entity who is not also the final user or consumer. An Account shall not in any way support persons or entities who or that traffic in or participate in the redistribution of new adidas products to persons or entities other than the final users or consumers. Without limiting the generality of the foregoing, an Account shall not purchase or otherwise receive new adidas products from a source other than adidas. Accounts may only be approved by adidas’s Vice President, North America Sales or an Officer of the Company, and only with advance written approval. Accounts may only sell from a location or locations approved in advance by adidas, and only under the trade name approved in advance by adidas. Such approval must be in writing. All new locations or trade names are subject to individual approval as a new Account, and adidas products shall not be sold to retail customers from any such additional location or under any different trade name without written approval from adidas. In the event of a change of location, name or ownership of an Account previously approved by adidas, the Account shall be treated as a new Account. Approval or rejection shall be within the sole discretion of adidas.

5. Internet & Catalog Advertising and Sales (and Similar Channels):

adidas has determined that much of the price advertising of golf equipment in catalogs, print media and the Internet is often detrimental to the maintenance of a high quality, premium brand image. Such advertising generally tends to commoditize the golf equipment of various manufacturers, notwithstanding the heterogeneous nature of the products offered. This tends to de-emphasize customer suitability and fit, and to overemphasize low price and volume sales. This also tends to encourage “free riding” on the efforts of full service dealers who provide the level of service required of a premium brand image, where fit and service is paramount. For the above reasons, adidas has recognized that it may be in the economic best interest of adidas and its dealers to unilaterally condition and restrict the advertising and selling of various of its products through certain channels of distribution, including catalog, print media and Internet selling (adidas Golf Internet Sales Policy). Nevertheless, adidas recognizes that Internet selling is evolving, and may have a significant role in providing product information and education to consumers, and thus adding value to the distribution of adidas’s premium brands. Accordingly, adidas’s policies on catalog, print media and Internet sales also continue to evolve and develop. adidas reserves the right to modify these policies from time to time, within its absolute discretion, in order to maximize brand and consumer utility.

6 (a). No Redistribution / Transshipment / Diversion of adidas Products:

Any participation in or facilitation of the resale, transshipment of any form or redistribution or diversion of adidas products to anyone other than the final user or consumer, or in any way contrary to Sections 4 and 5 herein, is expressly prohibited. adidas reserves the right to refuse to deal and to refuse to deal further with any Account that directly or indirectly redistributes, transships or diverts product for resale by unauthorized persons, whether in the United States or abroad.

6 (b). Transshipping Violation:

Without limitation to any other remedies available to adidas, for any Account that violates Section 6(a), adidas may, in its sole discretion, choose not to ship scheduled or future shipments of those categories of adidas product(s) that were resold, transshipped or diverted to anyone other than the final user or consumer for three months from the date of the letter from adidas notifying such Account of the infringement.

6 (c). Liquidated Damages:

Without limitation to Section 6(b), it would be impracticable or extremely difficult to fix the actual amount of damages that adidas would incur as a result of a violation by Account of the provisions of Section 6 (a) above. Therefore, for each and any violation of said Section 6(a), Account shall pay and adidas shall recover from Account (1) the costs incurred by adidas in repurchasing the offending product or products from the unauthorized person, and (2) reasonable attorney’s fees and costs in the amount of \$1,000 per transaction (the “Liquidated Damage Amount”). The Liquidated Damage Amount constitutes a reasonable estimate of the damages adidas will suffer for each and any violation, pursuant to the California Civil Code Section 1671, and is not intended to be, and is not a penalty.

© 2022 adidas America, Inc. adidas, the Badge of Sport, and the 3-Stripes mark are registered trademarks of adidas AG or its affiliates.

